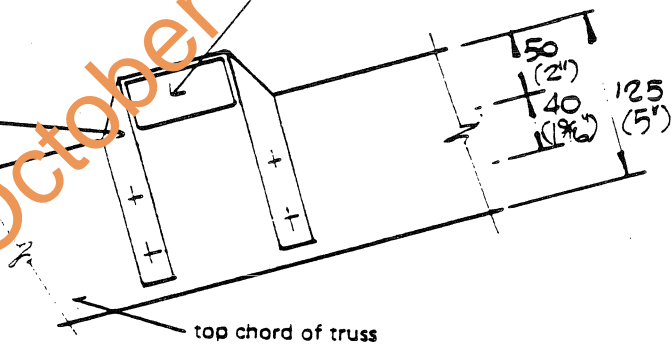


WARNING  
Product Approval Withdrawn  
October 2007

50 x 40mm F.W. roof batten

25 x 1.2mm galvanised strap taken over batten and fixed with 2/2.5mm F/H nails each side.



top chord of truss

**NOTE:**  
Joins in Battens shall be over trusses with 15mm min. bearing on trusses and each end of battens shall be strapped at this position.

MANUFACTURER –

ROLLS GERARD TILE  
Co. (AUST.) PTY. LTD.  
183-187 BEACONSFIELD ST.,  
REVESBY, N.S.W. 2212

PHONE: (02) 774-1077, 774-1244

FIXING OF ROOF BATTEN/TRUSS  
OR RAFTER DETAIL  
FOR ROLLS GERARD METAL TILE ROOFING

**DESIGN DATA SHEET**

NORTHERN TERRITORY  
CYCLONIC AREAS  
APPROVED:

*Charlie*

Drawing No.

**M/111/2**