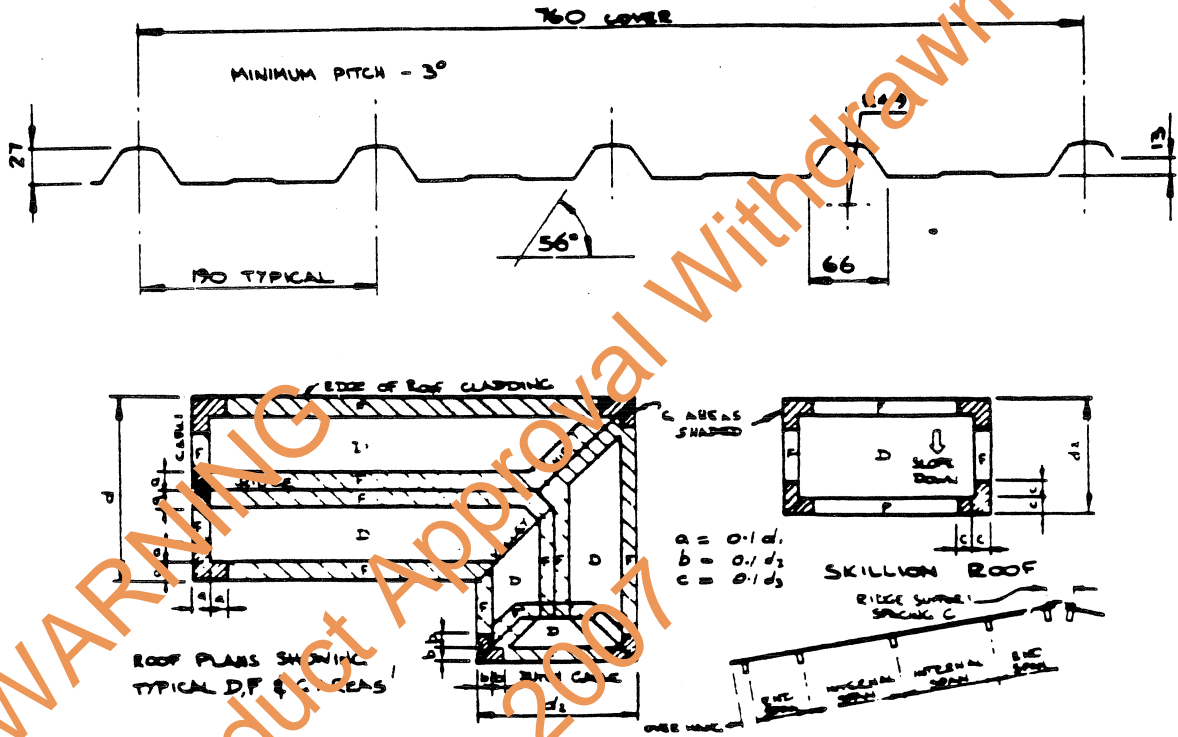


**ALLOWABLE ROOF SPANS FOR 0.48 MONIER MONOCLAD ROOF SHEETING FIXED WITH CYCLONE WASHERS.**



**TABLE 1. MAX ALLOWABLE SPANS.**

TERRAIN CATEGORY MULTIPLIER	ROOF AREA NOTATION	DESIGN WIND PRESSURE	MAX. END SPAN (mm)	MAX. INTERNAL SPAN (mm)	OVERHANG.		RIDGE PURLIN SPACING	SIDE LAP FASTENER
					MAX.	MIN.		
CAT 1 1.02	D	1.24	1010	1240	UNSUPPORTED - 150mm STIFFENED - 300mm	50mm FOR ALL FIXING CONDITIONS.	200mm FOR ALL FIXING CONDITIONS.	SIDE LAP FASTENER REQ'D AT CENTRE SPAN FOR SPANS EXCEEDING 900mm. USE 8x12mm CORR PLATED SELF TAPPING SCREW WITH NEOPRENE WASHER
	F	5.37	810	990				
	C	6.49	670	830				
CAT 2 0.93	D	3.53	1200	1460	UNSUPPORTED - 150mm STIFFENED - 300mm	50mm FOR ALL FIXING CONDITIONS.	200mm FOR ALL FIXING CONDITIONS.	SIDE LAP FASTENER REQ'D AT CENTRE SPAN FOR SPANS EXCEEDING 900mm. USE 8x12mm CORR PLATED SELF TAPPING SCREW WITH NEOPRENE WASHER
	F	4.46	960	1190				
	C	5.40	810	990				
CAT 2½ 0.79	D	2.55	1300	1700	UNSUPPORTED - 150mm STIFFENED - 300mm	50mm FOR ALL FIXING CONDITIONS.	200mm FOR ALL FIXING CONDITIONS.	SIDE LAP FASTENER REQ'D AT CENTRE SPAN FOR SPANS EXCEEDING 900mm. USE 8x12mm CORR PLATED SELF TAPPING SCREW WITH NEOPRENE WASHER
	F	3.22	1300	1560				
	C	3.89	1100	1340				

**NOTES:-**

- 0.48mm TYPICAL COATED THICKNESS (0.42BASE) AL/Zn COATED STEEL TO AS/NZS-C650-AZ150. COLORBOND AND MARVIPLATE FINISHES HAVE AZ150 CLASS AL/Zn COATING.
- REFER TO DATA SHEET NO. 1 FOR DETAIL OF CYCLONE WASHER
- BASIC DESIGN WIND VELOCITY = 1.15 x 55 = 63.25 m/sec.
- $P_e$  = DESIGN WIND PRESSURE IN KPA DERIVED FROM  $P_e = C_p q_e$  WHERE  $q_e = 0.6 (TERRAIN CAT. MULTIPLIER \times BASIC DESIGN)^2 = 10$   
 $C_p$  = OVERALL PRESSURE COEFFICIENT,  $C_{p\text{EXTERNAL}} = 0.9$   $C_{p\text{INTERNAL}} = 0.8$  FOR ROOF AREA D  $C_p = 0.9 + 0.8 = 1.70$   
 AREA F  $C_p = (1.9 + 0.9) + 0.8 = 2.15$ , AREA C  $C_p = (2 + 0.9) + 0.8 = 2.60$
- MAX ALLOWABLE SPANS DERIVED FROM TABLE 1 OF DATA SHEET NO M/112/2

MANUFACTURER - MONIER METAL BUILDING PRODUCTS EVERLEY Rd SOUTH GRANVILLE NSW 2142	FIXING OF - <u>MONIER MONOCLAD</u> ON BUILDINGS OF HEIGHT UP TO 5m.	
CERTIFIED BY - <i>Eric Stokes</i> ERIC STOKES BCI FIE (MUST) HEAD OF THE DEPARTMENT CIVIL & AERONAUTICAL ENGINEERING. P.M.I.T. LTD	DESIGN DATA SHEET DARWIN CYCLONIC AREA	
DATE 25/10/1985	DEPARTMENT OF LANDS BUILDING BRANCH	DRAWING NO M/112/1
	APP'D <i>[Signature]</i> DATE 29.10.85 C. CHEW MIE/AMT	