

ALLOWABLE ROOF SPANS FOR 0.48 T.C.T. MONOCLAD ROOF SHEETING FIXED WITH CYCLONE WASHERS.

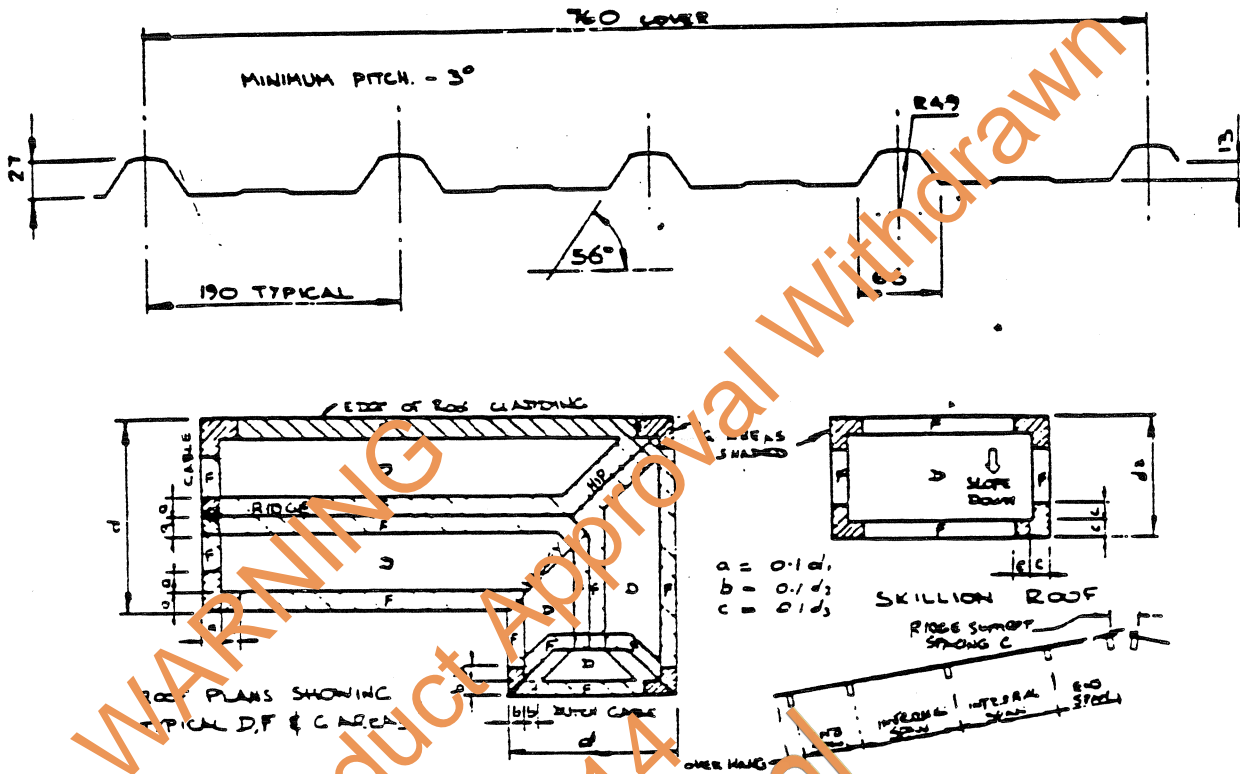


TABLE 1 MAX ALLOWABLE SPANS.

TERRAIN CATEGORY MULTIPLIER	ROOF AREA NO.	DESIGN WIND PRESSURE	MAX. END SPAN (mm)	MAX. INTERNAL SPAN (mm)	OVERHANG.		RIDGE PURLIN SPACING	SIDE LAP FASTENER
					MAX.	MIN.		
1.02	D	4.22	710	1240	UNSUPPORTED - 150mm STIFFENED - 300mm	50mm FOR ALL FIXING CONDITIONS.	240mm FOR ALL FIXING CONDITIONS.	SIDE LAP FASTENER REQ'D AT CENTRE SPAN FOR SPANS EXCEEDING 900mm. USE M8x12mm CAD PLATED SELF TAPPING SCREW WITH NEOPRENE WASHER
	F	5.37	870	990				
	C	6.49	670	830				
0.93	D	3.53	1200	1460	UNSUPPORTED - 150mm STIFFENED - 300mm	50mm FOR ALL FIXING CONDITIONS.	240mm FOR ALL FIXING CONDITIONS.	SIDE LAP FASTENER REQ'D AT CENTRE SPAN FOR SPANS EXCEEDING 900mm. USE M8x12mm CAD PLATED SELF TAPPING SCREW WITH NEOPRENE WASHER
	F	4.56	960	1190				
	C	5.40	810	950				
0.79	D	2.55	1300	1710	UNSUPPORTED - 150mm STIFFENED - 300mm	50mm FOR ALL FIXING CONDITIONS.	240mm FOR ALL FIXING CONDITIONS.	SIDE LAP FASTENER REQ'D AT CENTRE SPAN FOR SPANS EXCEEDING 900mm. USE M8x12mm CAD PLATED SELF TAPPING SCREW WITH NEOPRENE WASHER
	F	3.22	1200	1360				
	C	3.89	1100	1340				

NOTES:-

- 0.40mm TOTAL COATED THICKNESS (0.28 SE/AL/Zn COATED STEEL TO AS/NZS-C550-A7150. COLORBOND AND MARVIPLATE FINISHES HAVE A2159 CLASS AL/Zn COATING.
- REFER TO DATA SHEET M/113/2 FOR DETAIL OF CYCLONE WASHER
- BASIC DESIGN WIND VELOCITY = $1.15 \times 55 = 63.25 \text{ m/sec}$.
- P_e - DESIGN WIND PRESSURE - kPa DERIVED FROM $P_e = C_p q_0$ WHERE $q_0 = 0.6 \left(\frac{\text{TERRAIN CAT}}{\text{MULTIPLIER}} \times \text{BASIC DESIGN VELOCITY} \right)^2 = 10$.
 C_p - OVERALL PRESSURE COEFFICIENT, $C_{p \text{ EXTERNAL}} = 0.9$ $C_{p \text{ INTERNAL}} = 0.8$ FOR ROOF AREA D $C_{p \text{ D}} = 0.7 + 0.8 = 1.70$
 AREA F $C_p = (1.8 + 0.9) + 0.8 = 2.15$, AREA C $C_p = (2 + 0.9) + 0.8 = 2.60$
- MAX ALLOWABLE SPANS DERIVED FROM TABLE 1 OF DATA SHEET NO M/113/2

MANUFACTURER - WOODROFFE SHEET METAL PTY. LTD 1 TAMINGA St. REGENCY PARK. S.A. 5010	FIXING OF - <u>MONOCLAD</u> ON BUILDINGS OF HEIGHT UP TO 5m.	
	DESIGN DATA SHEET DARWIN CYCLONIC AREA	
CERTIFIED:- <i>Eric Stokes</i> ERIC STOKES BEE FIC (AUST) HEAD OF DEPARTMENT CIVIL & AERONAUTICAL ENGINEERING R.M.I.T.	DEPARTMENT OF LANDS BUILDING BRANCH	DRAWING NO.
	APP'D <i>J/K Stokes</i> DATE 15/5/86 MIE (AUST)	M/113/1
DATE: 25/10/1985		