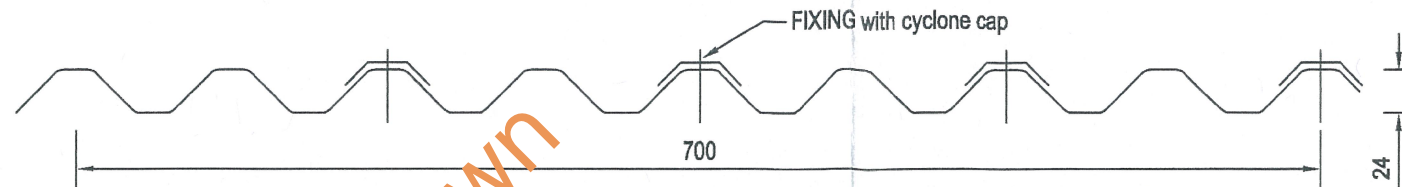
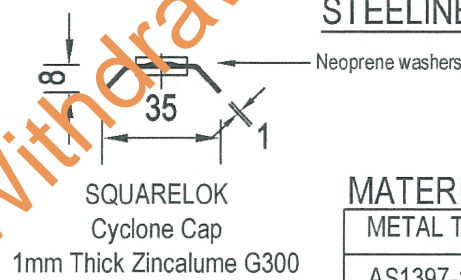


**MAX. ALLOWABLE ROOF SHEETING SPANS IMPORTANCE LEVEL 2 BLDGS**

Building Height	Terrain Category	V <sub>sit</sub> , β (m/s)	q <sub>u</sub> (KPa)	KL Local Factor	P <sub>e</sub> (KPa)	With Cyclone Caps		
						Steelspan 0.42mm	Steelspan 0.48mm	Steelspan 0.60mm
Up to 5m	1 & 2 Mzcat=0.95	66	2.61	1.0	4.18	1400	1650	1750
				1.5	5.36	1250	1350	1500
				2.0	6.53	1100	1260	1400
				3.0	8.89	970	1050	1050
	2.5 Mzcat=0.88	61	2.23	1.0	3.57	1500	1700	1900
				1.5	4.58	1300	1500	1700
				2.0	5.58	1200	1350	1500
				3.0	7.99	1050	1200	1250
	3 & 4 Mzcat=0.80	56	1.78	1.0	3.01	1650	1800	2100
				1.5	3.86	1450	1600	1850
				2.0	4.70	1300	1450	1650
				3.0	6.40	1150	1250	1450
3 & 4 Mzcat=0.80 Partial Shielding	50	1.50	1.0	2.40	1850	2000	2300	
			1.5	3.05	1650	1800	2050	
			2.0	3.75	1450	1650	1800	
			3.0	5.10	1250	1400	1600	
Up to 10m	1 & 2 Mzcat=1.00	69	2.86	1.0	4.57	1350	1500	1700
				1.5	5.86	1200	1300	1500
				2.0	7.14	1070	1200	1350
				3.0	9.71	970	950	950
	2.5 Mzcat=0.95	66	2.61	1.0	4.18	1400	1550	1750
				1.5	5.36	1250	1350	1500
				2.0	6.53	1100	1250	1400
				3.0	8.89	970	1050	1050
	3 & 4 Mzcat=0.89	62	2.31	1.0	3.89	1500	1650	1900
				1.5	4.73	1300	1450	1650
				2.0	5.77	1200	1350	1500
				3.0	7.84	1000	1150	1200
Up to 15m	1 & 2 Mzcat=1.07	73	3.20	1.0	5.12	1250	1400	1550
				1.5	6.55	1100	1250	1400
				2.0	7.99	1000	1100	1200
				3.0	10.87	880	880	880
	2.5 Mzcat=1.01	69	2.86	1.0	4.57	1350	1500	1700
				1.5	5.86	1200	1300	1500
				2.0	7.14	1050	1200	1350
				3.0	9.71	930	980	980
	3 & 4 Mzcat=0.95	66	2.61	1.0	4.18	1400	1550	1750
				1.5	5.36	1250	1350	1500
				2.0	6.53	1100	1250	1400
				3.0	8.89	970	1050	1050



**STEELINE STEEL SPAN ROOF SHEETING**



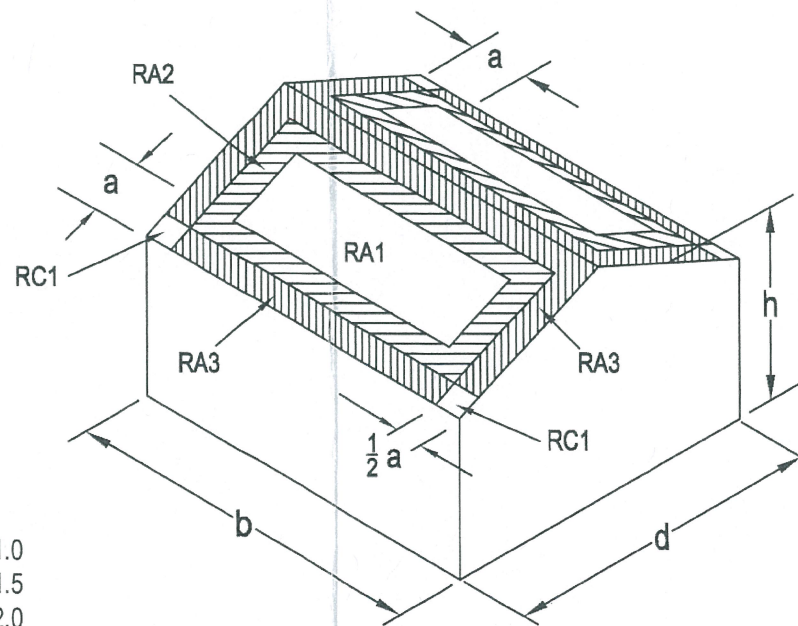
**MATERIAL SPECIFICATION**

METAL TYPE	THICKNESS	GRADE	FINISH	COVER
AS1397-1984	0.42mm BMT	550 MPa	ZINCALUME,	700mm + - 4
G550 / AZ150	0.48mm BMT	550 MPa	COLORBOND	
	0.60mm BMT	550 MPa		

**MINIMUM FIXING REQUIREMENTS**

Fixing	No. of Fixing	Cyclone Cap	Batten
M6.5-12x55 Roof Zips	4	Squarelok	Timber MGP12 (F8)
14-10 x 50 Tek Screw	4	Squarelok	Steel 1.5mm

Note: - All Fixings shall have Class 4 protective finishes.



RA1 - KL = 1.0  
 RA2 - KL = 1.5  
 RA3 - KL = 2.0  
 RC1 - KL = 3.0 for Roof pitch < 10°  
 RC1 - KL = 2.0 for 10° and greater

**ROOF - LOCAL PRESSURE ZONES**  
 NOTE - 'a' = THE LESSOR OF 0.2b, 0.2d & h

Product Name  
**Steeline Steel Span Sheeting for Roofs**

Product Description  
**Steel Span Screw Fixed Roof Sheeting**

Manufacturer's Name  
**GENERAL ROOFING PRODUCTS PTY LTD**  
 24 Pruen Road, Berrimah, NT, 0828

**DESIGN CRITERIA**  
 Wind speeds, pressures etc, have been determined in accordance with AS1170.2-2011, SAA Loading Code, Part 2:Wind Loads, Shielding - No Shielding UNO.  
 Topography - Flat Mt = 1.0  
 Importance level - 2 - Annual probability of exceedance 1:500  
 Basic Regional Wind Velocity V<sub>R</sub> = 69m/sec (R=500)  
 Internal Pressure Coefficient C<sub>pi</sub> = +0.7  
 C<sub>pe</sub> = 0.9 for h/d ratios <= 0.5  
 P<sub>e</sub> = q<sub>u</sub> x (C<sub>pe</sub> x K<sub>L</sub> + C<sub>pi</sub>)  
 "a" = Minimum of 0.2\*d or 0.2\*b or h

**Limitations**  
 Drainage requirements to be checked separately  
 Limited to h/d not greater than 0.5 in tabled spacings.  
 M<sub>t</sub> = M<sub>s</sub> = M<sub>d</sub> = 1.0  
 The span tables are suitable for single span, end spans and mid spans  
 Maximum overhang - 150mm  
 Minimum purlin steel thickness for fixing - 1.5mm G450  
 For roof pitch < 10° note RC1 zone local factor in roof corners  
 For h/d>0.5 where C<sub>pe</sub> > 0.9, refer to site specific engineer certification with adjusted P<sub>e</sub> calculation.  
 Installation assumes conventional edge flashing is installed over unlappped edge sheets.

**Accepted for Inclusion**

DTCM ref: **M/150/01**

Chairman's Signature: *P. Russell*

Chairman's Name: **PETER RUSSELL**

Date of Approval: **7/9/12** Expiry Date: **7/9/15**

Notes  
 Test Report - The above specification is based on LHL testing Report No C081001-19 by ENGTEST The University of Adelaide Australia. AND Blanmore Test Report No 107

ISSUE	DATE	INITIALS	**Design Engineers Certification	**Certifying Engineers Certification
			Name: Phil Low	Name: John L Towler
			RPEQ No: 6307	NT Rego Number: 24642ES
B	25.07.2012	JLT	Date: 25 July 2012	Date: 25 July 2012
A	05.05.2011	JLT	Signature: <i>[Signature]</i>	Signature: <i>[Signature]</i>
			**registered as a structural engineer in Queensland	**registered as a structural engineer in Northern Territory

**New Expiry: 7/9/17**  
 Signature: *[Signature]*