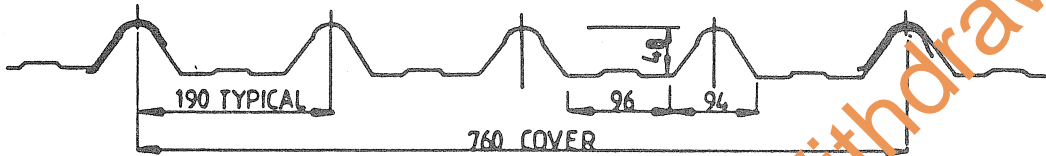
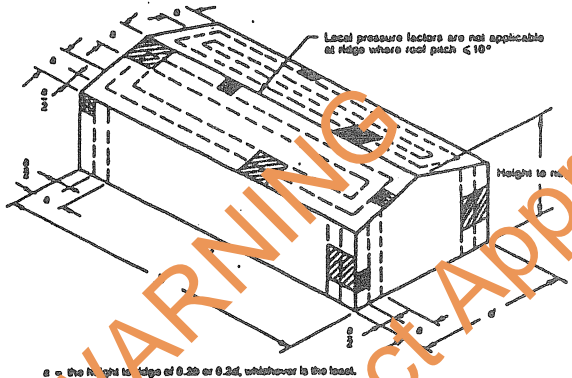


ALLOWABLE ROOF SPANS FOR 0.42mm WOODROFFES Hi-Rib ROOF SHEETING FIXED WITH CYCLONE WASHERS.



LOCAL PRESSURE FACTORS

| Case | Area | K ₁ |
|------|---|----------------|
| 1 | Any area of extent $a \times a$ within a distance a from roof edge, ridge involving a roof pitch of more than 10 degrees, or wall edge | 1.5 |
| 2 | Any area of extent $0.5a \times 0.5a$ within a distance $0.5a$ from roof edge, ridge involving a roof pitch of more than 10 degrees, or wall edge | 2.0 |



LOCAL PRESSURE ZONES

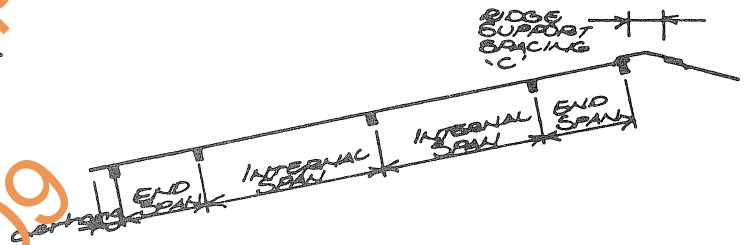


TABLE 1. Max. Allowable Spans for Buildings of up to 5m in height.

| Terrain Category Multiplier | Roof Area Notation | Design wind (kPa) Pressure | Max. End (mm) Span | Max. Internal Span | Overhang | | Ridge Purlin Spacing | Side Lap Fastener |
|-----------------------------|--------------------|----------------------------|--------------------|--------------------|----------------------|--|----------------------------|---|
| | | | | | Max. | Min. | | |
| Cat. 1 1.02 | General | 4.24 | 1100 | 1350 | Unsupported - 250 mm | Edge distance 50 mm for all fixing conditions. | 300 mm for all conditions. | Side lap fasteners required at centre span for spans exceeding 900 mm. Screw Specification : Slotted pan head size tapping or Hexagon head "S" point No.8 x 12 mm with neoprene washers. |
| | Case 1 | 5.37 | 850 | 1040 | | | | |
| | Case 2 | 6.49 | 595 | 730 | | | | |
| Cat. 2 0.93 | General | 3.53 | 1255 | 1540 | | | | |
| | Case 1 | 4.46 | 1050 | 1290 | | | | |
| | Case 2 | 5.40 | 850 | 1040 | | | | |
| Cat. 2 1/2 0.79 | General | 2.55 | 1475 | 1810 | | | | |
| | Case 1 | 3.22 | 1330 | 1630 | | | | |
| | Case 2 | 3.89 | 1175 | 1440 | | | | |

- NOTES : 1. HI-RIB is a cold formed roof decking manufactured from G550 steel sheeting base metal thickness 0.42 mm, total coated thickness 0.47 mm.
2. Refer to APPENDIX A for details of cyclone washer and other fixings.
3. Refer to APPENDIX B (attached) for wind load calculations.
4. Maximum allowable spans derived with attached graph obtained from load test. Refer APPENDIX C.
5. Table 1 is based on cyclic testing carried out in accordance with Darwin Area Building Manual - Part 39.7

| | | |
|---|---|------------------------|
| MANUF'S. - WOODROFFE SHEETMETAL Pty. Ltd. NAME ADDRESS 1 TAMINGA STREET REGENCY PARK S.A. 5007 PHONE No. (08) 243 1144 | FIXING OF: WOODROFFE "Hi-Rib" for Buildings up to 5m in height. IN THE DARWIN AREA. | |
| | DESIGN DATA SHEET | |
| CERTIFIED <i>[Signature]</i> DATE 12/6/87 | DEPARTMENT OF LANDS AND HOUSING APP'D. <i>[Signature]</i> DATE 6/87 | DRAWING No. M/113/7 |