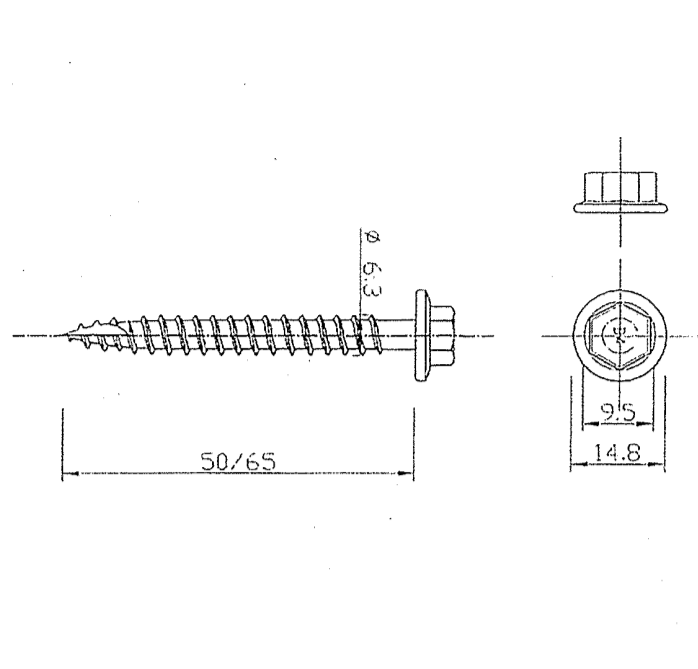


CYCLONE ASSEMBLY COMPONENTS

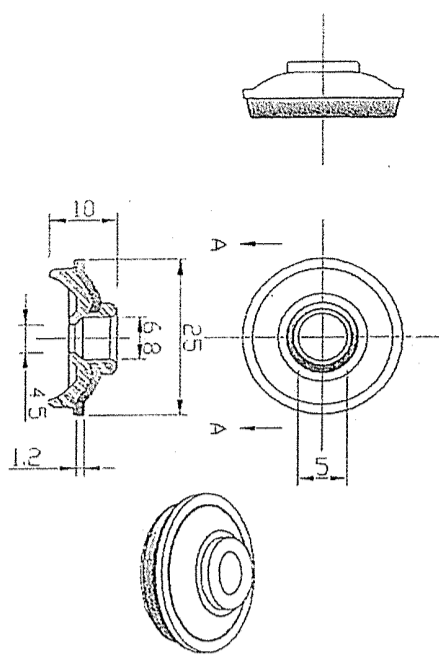
Comprising of self drilling screw & one piece cyclone washer

TYPE 17 WITH BRA WASHER CYCLONE ASSEMBLY

FOR METAL BATTENS & TIMBER BATTENS
14g - 10x50/65mm
(HEAD MARKING B4 & BF ONLY)



BREMICK BRA - CYCLONE WASHER / SEAL
ONE PIECE ALUMINIUM / EPDM CYCLONE WASHER

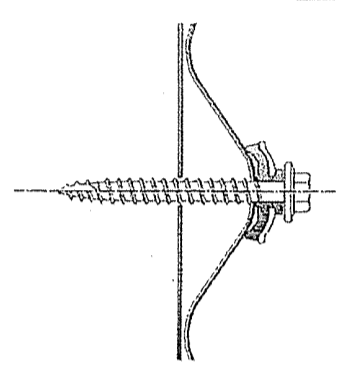


All dimensions mm (nominal)

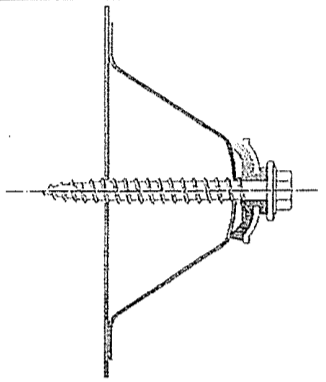
Testing was undertaken at the University of Adelaide. Tested and approved in accordance with the requirements of AS/NZS 1170.2 and the Building Code of Australia (BCA) 2008 Specifications B 1.2 for the Design of Buildings in cyclonic areas.

Test Certificate Numbers
Adelaide University: TR04, TR06 & TR10

FASTENING:
BSL CUSTOM ORB®
0.42mm BMT G550 min.



FASTENING TO:
METAL BATTENS
0.75mm BMT min.
G550 min.
TIMBER BATTENS
JD3 min.

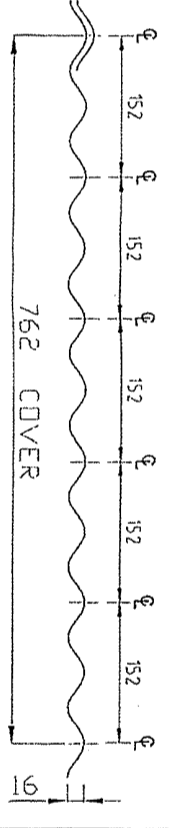


FASTENING:
BSL TRIMDEK®
0.42mm BMT G550 min.

FASTENING TO:
METAL BATTENS
0.75mm BMT min.
G550 min.

CORRUGATED ROOFING PROFILE - BSL CUSTOM ORB®

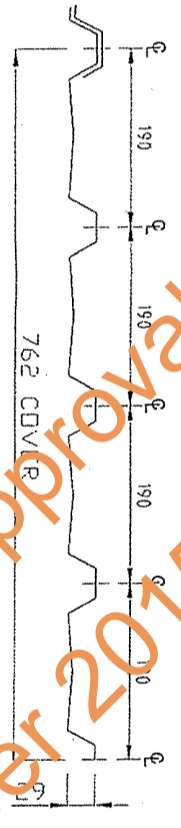
FASTENER SPACINGS
Crest Fastener Locations : Alternate Ribs (152mm Centres)
Spans Tested : 900mm End, 1150mm Intermediate, 900mm End



Supports	Crest Fixing	Side Lap Fixing
Metal Battens 0.75mm BMT min. G550 min. Timber JD3 min.	Bremick Type 17 14 - 10x50 BRA	Bremick Vortex™ Slitch M6.5-13x20 (900 mm Centres min.)

SQUARE RIB ROOFING PROFILES - BSL TRIMDEK®

FASTENER SPACINGS
Crest Fastener Locations : Each Rib (190mm Centres)
Spans Tested : *200mm End, 1500mm Intermediate, 1200mm End



Supports	Crest Fixing	Side Lap Fixing
Metal Battens 0.75mm BMT min. G550 min.	Bremick Type 17 14 - 10x65 BRA	Bremick Vortex™ Slitch M6.5-13x20 (900mm Centres min.)

Product Name
TYPE 17 BRA Cyclone Assembly

Product Description : Roofing Fasteners
T17 14-10x50/65 - BRA Cyclone Assembly

Manufacturer's Name
BREMICK FASTENERS Pty Ltd
www.bremick.com.au

Design Criteria
Fastener & support spacing to be controlled such that the maximum design loading per fastener or maximum design pressures do not exceed:

Table 1 : Strength Limit State Design Loads per Fastener

Roofing Profile	Test Load (kN)	C.O.V. (K)	Design Load (kN)
Custom Orb®	0.88	1.30	0.68
Trimdek®	1.05	1.30	0.81

Table 2 : Strength Limit State Design Pressures

Roofing Profile	Test Pressure (kPa)	C.O.V. (K)	Design Capacity (kPa)
Custom Orb®	5.36	1.30	4.12
Trimdek®	4.04	1.30	3.11

Limitations

This sheet confirms the structural adequacy of the roof sheeting assembly (sheeting, screw and washer) when correctly installed and does not extend to the capacity of the batten/purlin. Refer to the sheeting & batten manufacturers data for maximum support spacings. Axial withdrawal capacity for each fastener exceeds the 3.1kN requirements of AS3566.1.
Strength limit state fastener loads have been derived from the test pressures using simplified static analysis with the uniform pressure (load) distribution.

Accepted for Inclusion

DTCM ref: **M / 166 / 01**

Chairman's Signature:

Chairman's Name: **TREVOR JOHN**

Date of Approval: **21/10/10** Expiry Date: **21/10/13**

****Design Engineers Certification**
Name: **Adam Topolinski**
Rego Number: **11228-3**
Date: **6.9.10**
Signature:

****Certifying Engineers Certification**
Name: **Trevor John**
NT Rego Number: **12178 ES**
Date: **5.9.10**
Signature: