

ALLOWABLE ROOF SPANS FOR 0.65mm SPANDEK¹ FIXED WITH 40 x 33 x 1.0 mm CYCLONE WASHER⁴ OR DOWTY SPATS⁵.

REGIONAL BASIC² DESIGN WIND VELOCITY = 55 m/sec.

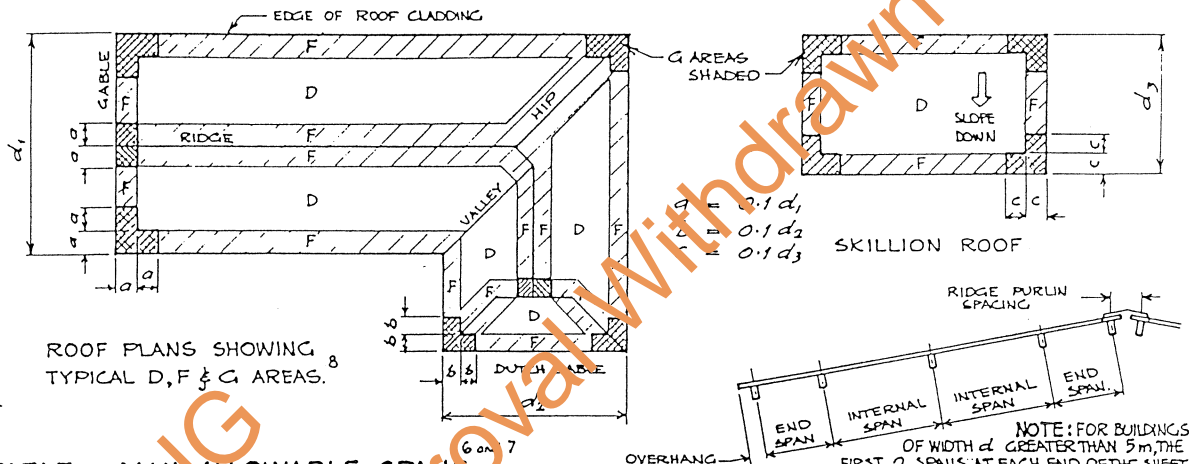


TABLE 1. MAX. ALLOWABLE SPANS.

TERRAIN CATEGORY MULTIPLIER ⁹	ROOF AREA NOTATION	CYCLONE WASHER		OVERHANG		RIDGE PURLIN SPACING	SIDE LAP FASTENER
		MAX. END SPAN mm	MAX. INT SPAN mm	MAX.	MIN.		
CAT. 1 1.02	D $3 P_2 = 4.24$	1100	1370	UNSTIFFENED OVERHANG	350 mm.		
	F 5.2	870	1090				
	G 6.47	740	890				
CAT. 2 0.93	D 3.53	1270	1570				
	F 4.46	1050	1300				
	G 5.40	860	1090				
CAT. 2½ 0.79	D 2.65	1500	1890				
	F 3.21	1340	1660				
	G 3.89	1180	1470				

NOTES.

- 0.65mm TOTAL COATED THICKNESS (0.60mm BASE) AL/ZN COATED STEEL TO AS1397-C300 - A2 150 COLORBOND AND MARVIPLATE FINISHES HAVE A2 150 CLASS AL/ZN COATING.
- BASIC DESIGN WIND VELOCITY = $1.15 \times 55 = 63.25$ m/sec.
- P_2 = DESIGN WIND PRESSURE IN kPa DERIVED FROM $P_2 = C_p q_z$ WHERE $q_z = 0.6$ (TERRAIN CATEGORY MULTIPLIER \times BASIC DESIGN WIND VELOCITY)² $\times 10^{-3}$, AND C_p = OVERALL PRESSURE COEFFICIENT.
 $C_{p \text{ EXTERNAL}} = 0.9$, $C_{p \text{ INTERNAL}} = 0.8$.
FOR ROOF AREA D, $C_p = 0.9 + 0.8 = 1.70$, AREA F $C_p = (1.5 \times 0.9) + 0.8 = 2.15$, AREA G, $C_p = (2 \times 0.9) + 0.8 = 2.60$.
- REFER TO DATA SHEET NO. M/101/6 FOR DETAILS OF CYCLONE WASHER.
- MAX. ALLOWABLE SPANS DERIVED FROM TABLE 1. OF DATA SHEET NO. M/101/6

- TABLE OF MAX. ALLOWABLE SPANS IS APPLICABLE ONLY TO 0.65mm SPANDEK FIXED WITH 5 FASTENERS PER SHEET ON ALL SUPPORTS. REFER TO DATA SHEET NO. M/101/6 FOR LOCATION OF FASTENERS.
- REFER TO AS1170 PART 2 - 1975 APPENDIX B.
- REFER TO DARWIN AREA BUILDING MANUAL, PART 30.
- REFER TO AS1170 PART 2 - 1975, RULE 9.

LBI DWG No. 68857

MANUF'S NAME LYSAGHT BUILDING IND. CNR. COONAWARRA AND BOMBING ROADS, WINNELLIE, N.T. 5789 843311 PHONE NO.	FIXING OF... LYSAGHT "SPANDEK" ROOFING FOR BUILDINGS OF HEIGHT UP TO 5m IN THE DARWIN AREA
DESIGN DATA SHEET	
CERTIFIED... M.I.E. AUST. DATE... 4/3/1988	DRAWING NO. M. 101.13
APP'D... M.I.E. AUST.	DATE 20/4/88