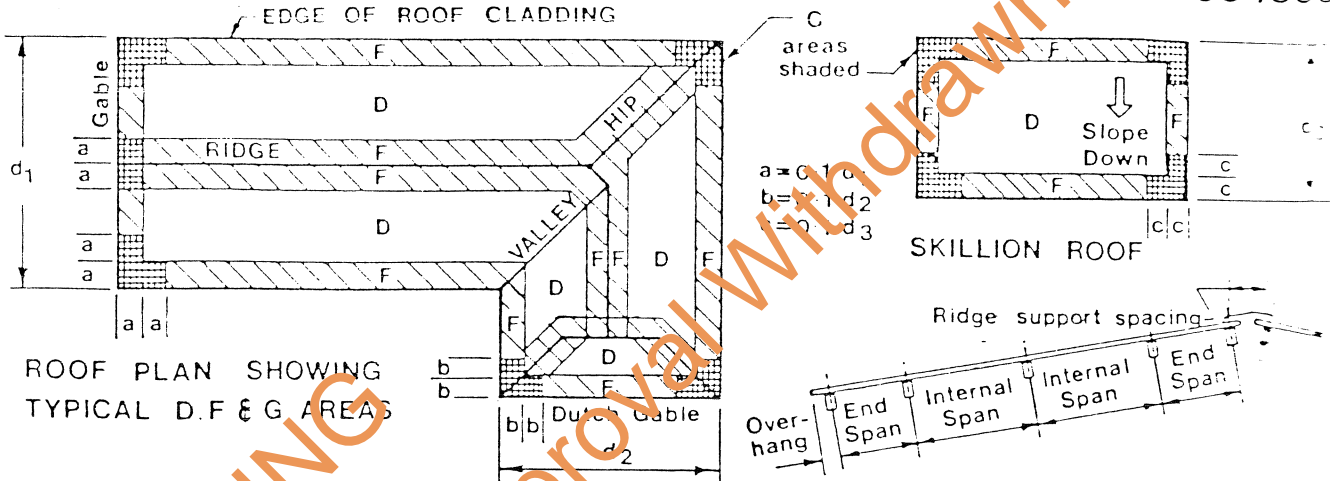


# ALLOWABLE ROOF SPANS FOR 0.48 mm INTERLINE CORRUGATED FIXED WITH 40 x 46 x 1.0 mm CYCLONE WASHERS<sup>2</sup>

NOTE: For buildings of width greater than 5m the first two spans at each end of the sheet shall be treated as end spans.

Regional Basic<sup>3</sup> Design Wind Velocity = 55 m/sec



**TABLE 1 MAX ALLOWABLE SPANS<sup>5</sup>**

Terrain Category Multiplier	Roof Area Notation	Fastener Frequency <sup>6</sup>	Maximum End Span mm	Maximum Internal Span mm	Overhang		Ridge Purlin Spacing	Slope Lap Fastener
					Maximum	Minimum		
Cat 1 <b>1.02</b>	<b>D</b> 4 Pz = 4.24	Every 2nd corr.	850	1040	Unsupported Overhangs 200 mm Stiffened Overhangs 300 mm	50 mm For All Fixing Conditions	240 mm Max For All Fixing Conditions	Code Lap Fastener required at centre span for spans exceeding 900 mm to meet specifications. Slatting pan to be used at eaves of buildings spanned more than 12 m with two fasteners per
		Every	900	1200				
	<b>F</b> 5.37	Every 2nd	670	830				
		Every	880	1100				
	<b>G</b> 6.49	Every 2nd	530	690				
		Every	750	900				
Cat 2 <b>0.93</b>	<b>D</b> 3.53	Every 2nd	900	1200				
		Every	900	1200				
	<b>F</b> 4.46	Every 2nd	810	980				
		Every	900	1200				
	<b>G</b> 5.40	Every 2nd	660	820				
		Every	880	1090				
Cat 2½ <b>0.79</b>	<b>D</b> 2.53	Every 2nd	900	1200				
		Every	900	1200				
	<b>F</b> 3.22	Every 2nd	900	1200				
		Every	900	1200				
	<b>G</b> 3.89	Every 2nd	900	1130				
		Every	900	1200				

**NOTES**

- 0.48 mm total coated thickness (0.42 mm base Zn/Al coated steel to AS 1445-C990 AZ 150 colorbond has a AZ150 class Zn/Al coating supplied by J.L.A.
- Refer to data sheet no 2A for details of cyclone washer
- Basic design wind velocity = 1.15 x 55 = 63.25 m/SEC
- Pz = design wind pressure in kPa derived from: Pz = Cp qz where qz = 0.6 (Terrain Category Multiplier x Basic Design<sup>7</sup> x 10<sup>-3</sup> and Cp = Overall pressure coefficient  
Cp = external = 0.9, Cp internal = 0.8  
For roof area D, Cp = 0.9 + 0.8 = 1.70, Area F Cp = 1.5 x 0.9 + 0.8 = 2.15, Area G = (2 x 0.9) + 0.8 = 2.6
- Max allowance spans derived from table 1 of data sheet 2A
- Fastener frequency applies to supports on both sides of span unless otherwise consideration except that edge supports may have fasteners at even intervals and corrugation for all fixing conditions refer to data sheet no. 2A or drawing 2A
- Refer to AS1170 part 2:1975 appendix B
- Refer to NT Building Code part 30
- Refer to AS1170 part 2:1983 rule 9

MANUF'S NAME .. The Roofing Centre Darwin  
ADDRESS .. Lot 1130 Georgina Cres.  
Palmerston .. PHONE No.(089) 32 2077

FIXING OF ..... Interline Corrugated  
..... On Buildings of Height up to 5m  
IN THE DARWIN AREA

CERTIFIED .. *R.L. Cullen* .. M.I.E. AUST  
R.L. CULLEN, REGISTERED ENGINEER

**DESIGN DATA SHEET 1A**

DEPARTMENT OF LANDS  
BUILDINGS BRANCH

DRAWN BY ..  
M/114/1