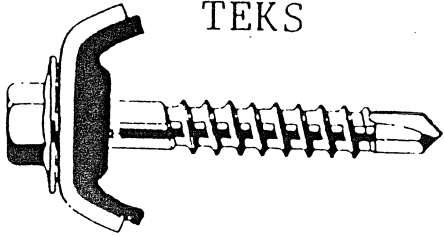
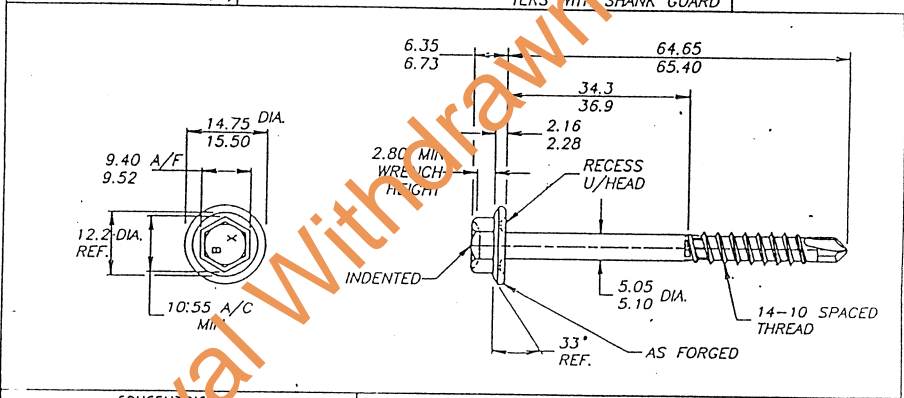


Kliplok Cyclone Assembly
TEKS

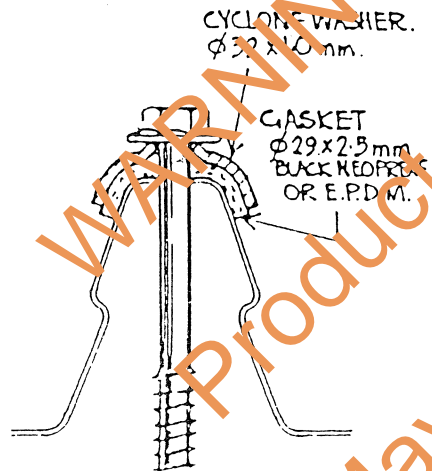


W.A.D. PRODUCT SPECIFICATION.
14-10 X 65.0mm INDENTED HEX WASHER RECESSED
TEKS WITH SHANK GUARD

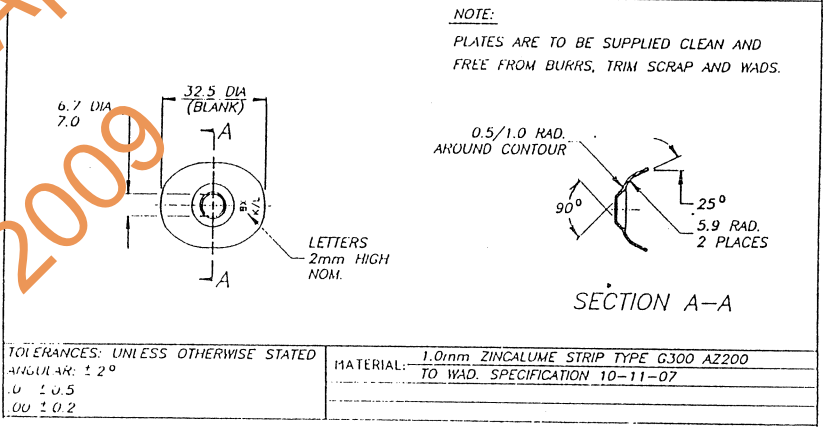


CONCENTRICITY:		MATERIAL: STEEL 1022	
HEAD TO SHANK	0.25	T.I.R. MAX.	SURFACE HARDNESS 540-650 HV 5kg. CORE HARDNESS
WASHER TO SHANK	0.50	T.I.R. MAX.	320-390 HV 20kg. CASE DEPTH 0.13-0.18 mm.
		FINISH: HOT DIPPED GALVANISED. ✓	

ASSEMBLY.



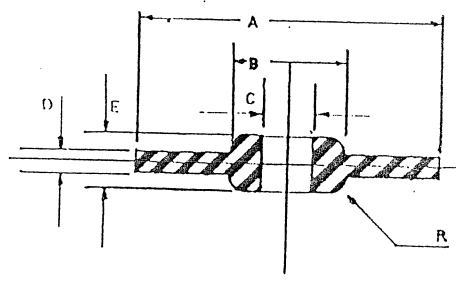
W.A.D. PRODUCT SPECIFICATION.
CYCLONE PLATE KLIPLOK



TOLERANCES: UNLESS OTHERWISE STATED		MATERIAL: 1.0mm ZINCALUME STRIP TYPE G300 AZ200	
ANGULAR: ± 2°		TO W.A.D. SPECIFICATION 10-11-07	
± 0.5			
± 0.2			

	DIMENSION	SIZE
A	OD.	28.8mm
B	Boss OD.	12.3
C	Boss ID	5.4
D	Disc Width	2.4
E	OA Height	5.9
R	Curve Radius	2.0

DESCRIPTION
DEKSEAL EPDM CYCLONE WASHER No 14 FOR KLIPLOK



MANUFACTURES NAME: W.A. DEUTSHER PTY. LTD. 600 SOUTH ROAD MOORABBIN, VIC.	FIXINGS FOR KLIPLOK TO STEEL PURLINS. NORTHERN TERRITORY CYCLONIC AREAS.	
	DESIGN DATA SHEET	
APPROVED: DATE: 4/2/91	DRAWING N°: M/115/1	