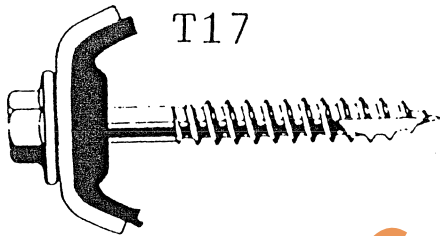
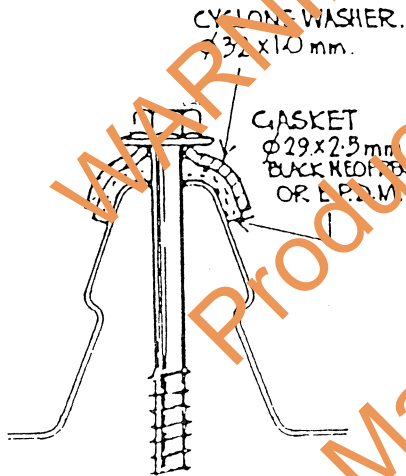


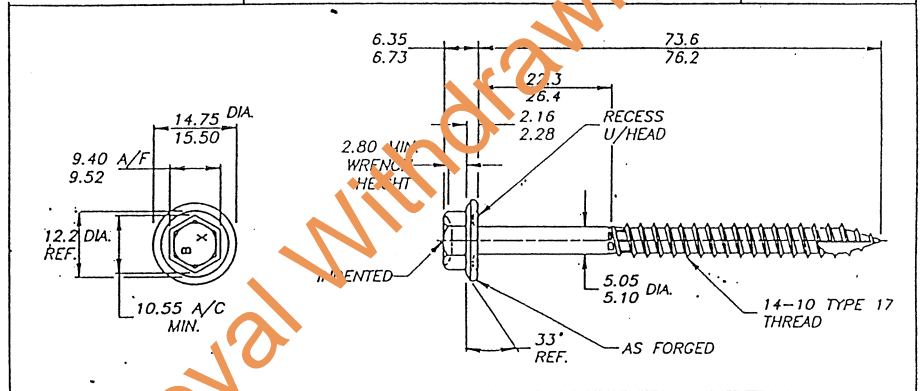
Kliplok Cyclone Assembly



ASSEMBLY

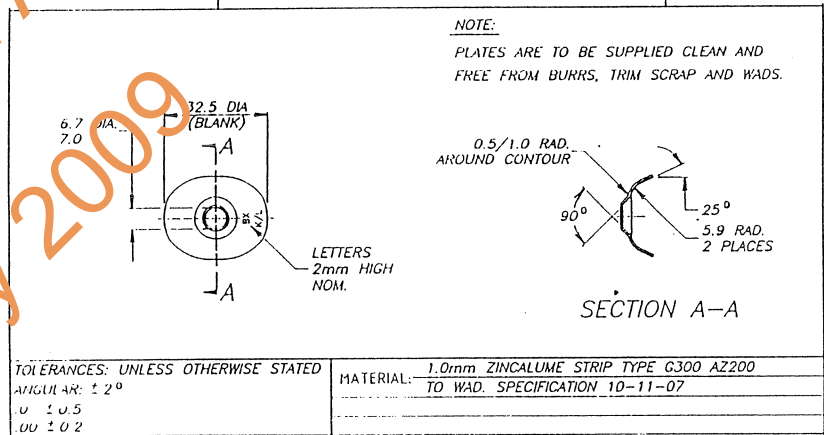


V.A.D. PRODUCT SPECIFICATION.
14-10 X 75.0mm INDENTED HEX WASHER RECESSED
TYPE 17 WITH SHANK GUARD



CONTINUTY.		MATERIAL: STEEL 1022	
HEAD TO SHANK:	0.25	T.I.R. MAX:	SURFACE HARDNESS 470 HV 5 kg. MIN. CORE HARDNESS
WASHER TO SHANK:	0.50	T.I.R. MAX:	285-360 HV 20 kg. CASE DEPTH 0.12-0.28 mm.
		FINISH: HOT DIPPED GALVANISED	

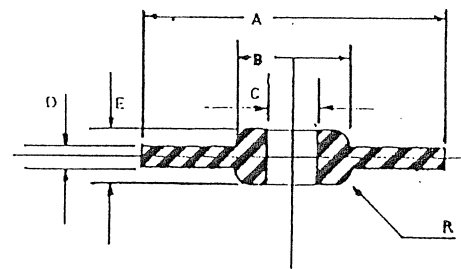
V.A.D. PRODUCT SPECIFICATION.
CYCLONE PLATE KLIPLOK



TOLERANCES: UNLESS OTHERWISE STATED		MATERIAL: 1.0mm ZINCALUME STRIP TYPE G300 A2200	
ANGULAR: ± 2°		TO WAD. SPECIFICATION 10-11-07	
U ± 0.5			
UU ± 0.2			

	DIMENSION	SIZE
A	OD.	28.0mm
B	Boss OD.	12.3
C	Boss ID	5.4
D	Disc Width	2.4
E	OA Height	5.9
R	Curve Radius	2.0

DESCRIPTION
DFKSEAL EPDM CYCLONE WASHER
No 14 FOR KLIPLOK



MANUFACTURERS NAME: W.A. DEUTSCHER PTY. LTD. 600 SOUTH ROAD MOORABBIN, VIC.	FIXINGS FOR KLIPLOK TO TIMBER PURLINS. NORTHERN TERRITORY CYCLONIC AREAS.	
	DESIGN DATA SHEET DRAWING N°: M/115/7	
APPROVED: <i>[Signature]</i> DATE: 4/2/91		