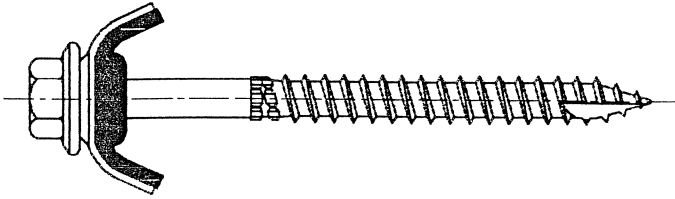
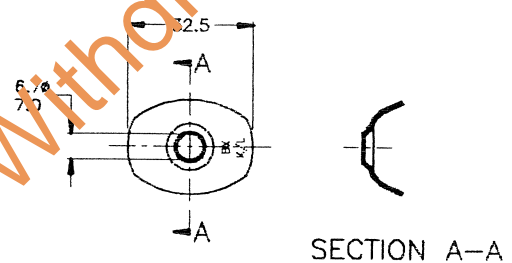


KLIPIK CYCLONE ASSEMBLY TY17



TIGHTEN SCREW SUCH THAT GASKET IS FIRMLY CLAMPED AND A LEAKPROOF JOINT OBTAINED

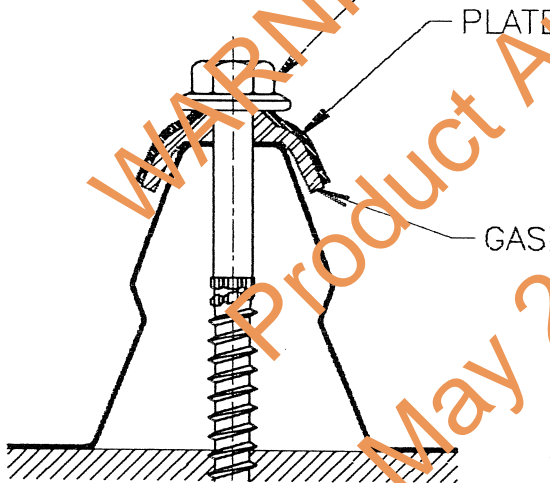
SCREW



SECTION A-A

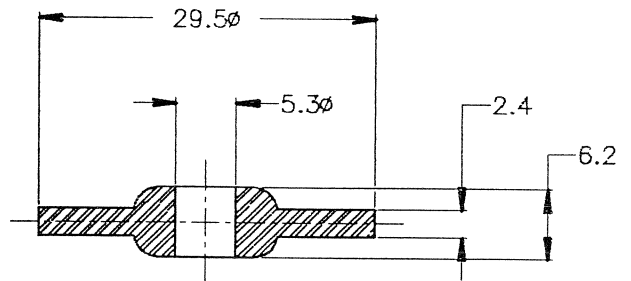
MATERIAL:	1.0mm STEEL STRIP TYPE G300 TO ITW BUILDDEX SPECIFICATION 10-11-02
FINISH:	50um ZINCALLOY TO ITW BUILDDEX SPECIFICATION 80QC-009

PLATE

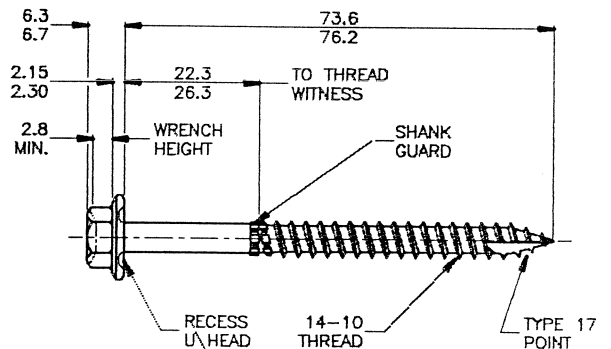
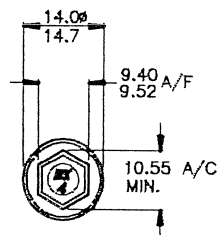


PLATE

GASKET



GASKET



CONCENTRICITY	MATERIAL: STEEL 1022
HEAD TO SHANK: 0.25 T.I.R. MAX.	HEAT TREATMENT: CASE HARDEN
WASHER TO SHANK: 0.60 T.I.R. MAX.	FINISH: 50um ZINCALLOY TO ITW BUILDDEX SPECIFICATION 80QC-009

SCREW

14-10X75mm INDENTED HEX WASHER RECESSED
TYPE 17 WITH SHANK GUARD

Approved for inclusion in the N.T. D.T.C.

by: BAC *[Signature]* DATE *14/2/97*

ITW Buildex
a division of W. A. Deutsher.

600 South Road Moorabbin, Vic. 3189

Phone (03) 9555 6433 Fax (03) 9532 0693

COLLESS AND O'NEILL PTY LTD
CONSULTING CIVIL AND STRUCTURAL ENGINEERS

84 Woods Street, Darwin, N.T. 0800

Phone (089) 81 9644

ACN 009 622 968

CERTIFIED *[Signature]*

DATE *7-2-97*

DESIGN DATA SHEET

DARWIN CYCLONE AREA

DRG. No.

APPD: *[Signature]*

DATE

12.2.97

M/115/8