

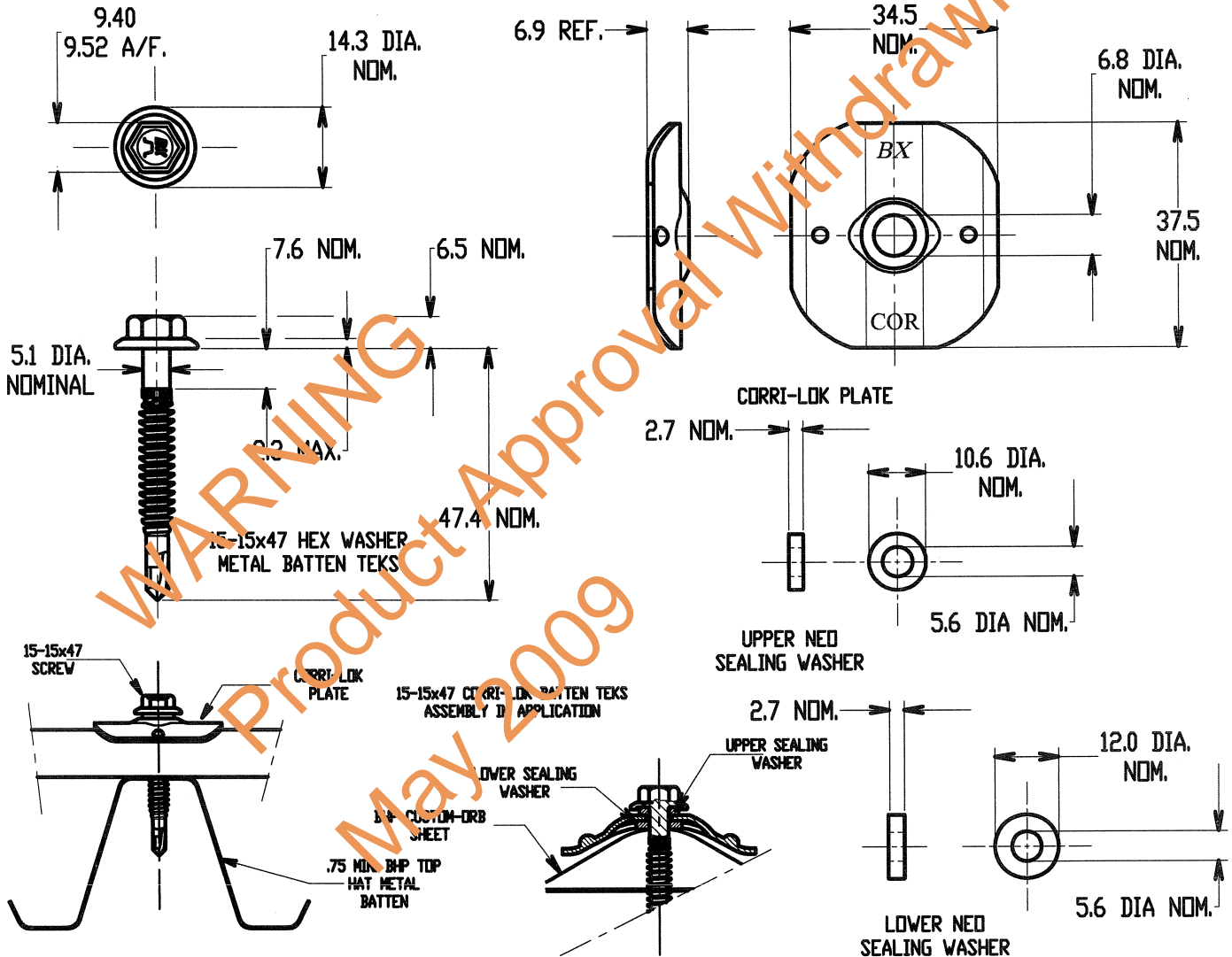
ITW Buildex

A Division of ITW Australia Pty. Ltd.
600 South Rd. (P.O. Box 1154 Moorabbin, Vic 3189)
Tel. 03 9556 8968 Fax. 03 9532 0693

CORRI-LOK BATTEN TEKS FIXING FOR BHP CUSTOM ORB TO STEEL 0.75mm MIN. THICKNESS (CYCLONIC AREAS)

TECHNICAL DATA SHEET

ITW BX DRAWING NUMBER
0310-0565-7CS-DS



LIMITATION OF USE

1. THIS CYCLONE WASHER ASSEMBLY IS TO BE USED AS AN ALTERNATIVE FIXING METHOD FOR DTC SHEET NUMBER M101/1, M101/2, M101/3, M101/4, M101/5, M101/6, M101/7 & M101/8
2. THIS SHEET CONFIRMS THE STRUCTURAL ADEQUACY OF THE ROOF SHEETING ASSEMBLY (SHEETING, SCREW & WASHER) TO MEET CYCLIC LOADING AS PER BCA NT REQUIREMENTS AND DOES NOT EXTEND TO THE CAPACITY OF THE BATTEN/PURLIN FOR APPLIED LOADS.

TESTING AUTHORITY

JAMES COOK UNIVERSITY
CYCLONE TESTING STATION
TEST REPORT: TS 523

FASTENER		CORRI-LOK PLATE		EPDM SEALING WASHERS	
MATERIAL SAE 1022 STEEL	HARDEN TO AS3566	MATERIAL 1.0 ZINCALUME STRIP G300 AZ150		MATERIAL EPDM	NIL HEAT TREAT
FINISH TO AS 3566		NIL HEAT TREAT	FINISH TO AS 3566	FINISH AS RECEIVED	

ALL MECHANICAL PERFORMANCE TESTS CONDUCTED ARE IN ACCORDANCE WITH AS 3566

CERTIFIED BY Mark Doneddu (Grad. IE Aust P Eng.) MEMBER OF THE INSTITUTE OF ENGINEERS
(MEMBERSHIP NO. 41582)

SIGNED *Mark Doneddu* DATE 16/5/2003

APPROVED FOR INCLUSION IN THE NORTHERN TERRITORY DEEMED TO COMPLY STANDARDS MANUAL BY THE BUILDING ADVISORY COMMITTEE

SIGNED *[Signature]* DATE 1/10/2003

PSD LOAD CAPACITY 0.69KN	DRAWN 27TH OCTOBER 2000	APPROVED BY <i>[Signature]</i>	M/115/9
	REVISED 16TH MAY 2003		