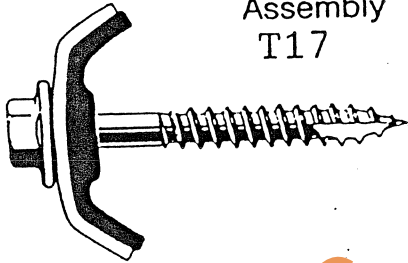
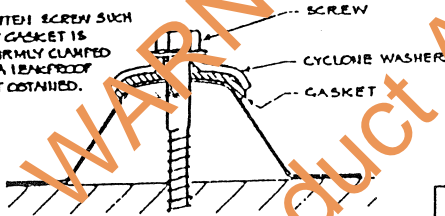


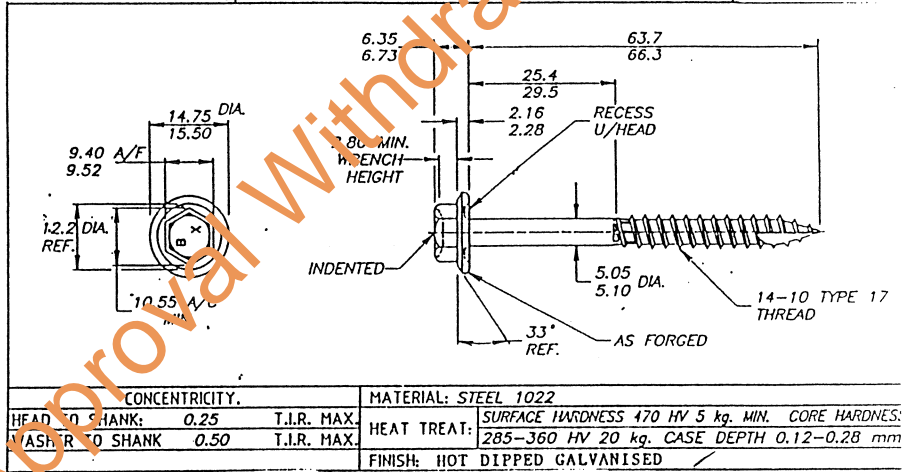
Trimdek/Spandek Cyclone Assembly  
T17



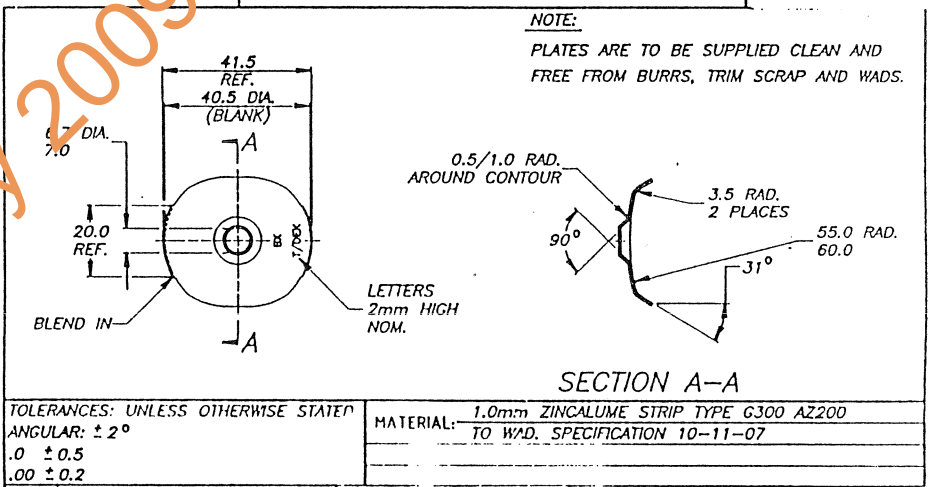
TIGHTEN SCREW SUCH THAT GASKET IS FIRMLY CLAMPED AND A LEAKPROOF JOINT OBTAINED.



W.A.D. PRODUCT SPECIFICATION  
14-10 X 65.0mm INDENTED TYPE WASHER RECESSED TYPE 17 WITH SHANK GUARD

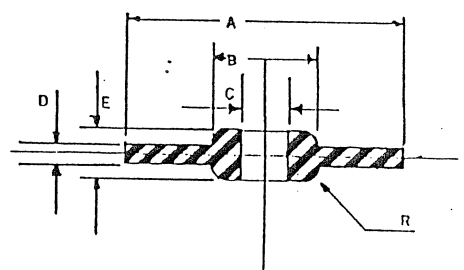


W.A.D. PRODUCT SPECIFICATION  
CYCLONE PLATE SPANDEK/TRIMDEK



A	OD	35.4mm
B	Boss OD	12.3
C	Boss ID	5.4
D	Disc Width	26
E	OA Height	5.1
R	Curve Radius	1.8

DESCRIPTION  
DEKSEAL EPDM CYCLONE WASHER No 14 FOR SPANDEK / TRIMDEK



MANUFACTURERS NAME: W.A. DEUTSCHER PTY. LTD. 600 SOUTH ROAD MOORABBIN, VIC.	FIXINGS FOR SPANDEK, TRIMDEK, AND HANDEK, TO TIMBER NORTHERN TERRITORY CYCLONIC AREAS.
APPROVED: DATE: 2/2/91	DESIGN DATA SHEET DRAWING N°: M/115/11