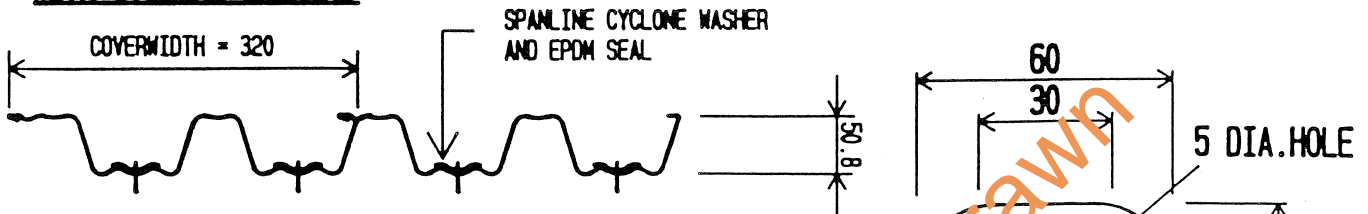


SPANLINE AUSTRALIA DOUBLE-U ROOFING WITH CYCLONE WASHERS



MATERIAL SPECIFICATION

0.42 BMT, 0.57 TMT ZINCALUME STEEL TO AS 1397 - 6550 - AZ150
 COLORMELDED COATING 80% GLOSS UNDERSIDE, 55% GLOSS NON-REFLECTIVE TOPSIDE.

TABLE 1 IS BASED ON FATIGUE TEST AS DESCRIBED IN CLAUSE 3 (b) OF SPECIFICATION B1.2 OF THE NORTHERN TERRITORY APPENDIX TO THE BUILDING CODE OF AUSTRALIA 1990. THE FATIGUE TEST CONSISTED OF 10000 CYCLES OF ZERO TO DESIGN LOAD, FOLLOWED BY A STATIC PROOF LOAD OF 1.8 TIMES THE DESIGN LOAD. THE ALLOWABLE SPANS GIVEN IN TABLE 1 HAVE BEEN DETERMINED BY INTERPOLATION OF TEST RESULTS OBTAINED BY FULL SCALE TESTING CARRIED OUT AT THE CYCLONE TESTING STATION, JAMES COOK UNIVERSITY.

WIND LOADS HAVE BEEN DETERMINED IN ACCORDANCE WITH AS 1170.2 - 1989 "SAA LOADING CODE PART 2: WIND LOADS FOR CYCLONIC REGIONS C AND D". THE WIND LOADS HAVE ALSO BEEN CATEGORISED INTO BASIC CLASSIFICATIONS OF AS 4055 - 1990 "WIND LOADS FOR HOUSING" AND "THE TIMBER RESEARCH AND DEVELOPMENT ADVISORY COUNCIL" OF QUEENSLAND FRAMING MANUAL CLASSIFICATION.

RACKING STRENGTH PROVIDED BY THE CLADDING HAS NOT BEEN TESTED AND SHOULD NOT BE ALLOWED FOR IN THE DESIGN OF THE STRUCTURE.

RECOMMENDED FASTENERS

Timber Supports

Strength Group	Self-Drilling Wood Screw with EPDM Seal
Hardwood J1 - J3	Type 17 HEX. HEAD No.14 - 10 x 65
Softwood J4	Type 17 HEX. HEAD No.14 - 10 x 75

Steel Supports

Steel Thickness	Self-Drilling & Tapping screw with EPDM Seal
Up To 5.0mm	No.12 - 10 x 55 HEX. HEAD

When fixing over insulation blankets increase screw length to maintain fastener penetration into support.

TABLE 1: Allowable Spans for Roof & Wall Sheets (DARWIN AREA)

CLASSIFICATION WIND		EQUIVALENT q_z BASIC PRESSURE $C_p=1.0$	PRESSURE COEFFICIENT			
AS 4055	TRADAC		$C_{pn} = 1.0$	$C_{pn} = 1.2$	$C_{pn} = 1.35$	$C_{pn} = 1.6$
C2	M50	1.50 kPa	2200	1850	1750	1500
C3	M60	2.16 kPa	1600			

NOTE: SPANLINE CLADDING IS TO COVER DOMESTIC PATIOS AND CARPORTS ONLY.

WASHER PLAN (1.0mm G550)

WASHER SECTION

GASKET PLAN

GASKET SECTION BLACK EPDM

NOTES:

- MINIMUM ROOF PITCH IS 1°
- PRIOR TO WALKING ON ROOF - A TEMPORARY WALKWAY SHALL BE SUPPORTED ON PURLINS OR ROOF BEAMS IN ACCORDANCE WITH AS 1562-1980.

MANUFACTURERS NAME:

SPANLINE WEATHER STRONG BUILDING SYSTEM PTY.LTD.

A.C.N. 002 968 087

CNR. BANKSIA & BORONIA STREETS

P.O. BOX 343 BYRON BAY, N.S.W. 2481

Phone (066) 858 088 Fax (066) 858 235

FIXINGS & SPANS OF 0.42mm G550 SPANLINE ROOF SHEETING WITH CYCLONE WASHERS FOR DARWIN AREA.

BUILDING HEIGHT UP TO 6.0m (Eaves)
 UP TO 8.5m (Overall)

IRWIN, JOHNSTON & PARTNERS
 (N.T.) ENGINEERS PTY.LTD.
 CONSULTING ENGINEERS
 82 SMITH STREET, DARWIN 0610
 PH. (089) 819011 FAX. (089) 814010

NIE AUST.

DESIGN DATA SHEET

DEPT. OF LANDS AND HOUSING
 BUILDING AUTHORITY BRANCH

DRAWING No.

M/123/1

CERTIFIED

JW Best

AP'D

DATE 12.12.91