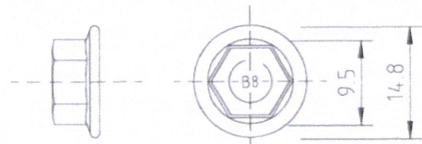


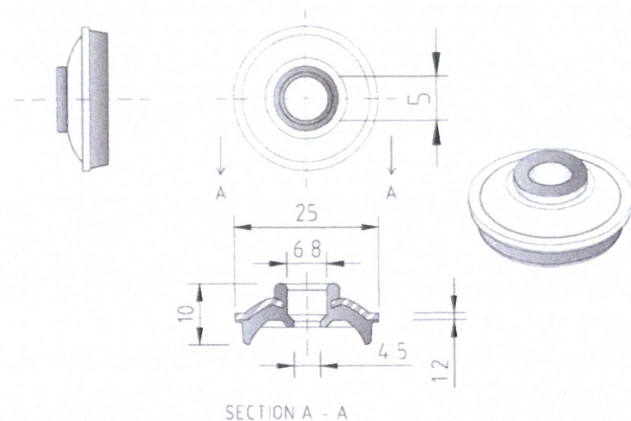
IN ACCORDANCE WITH NCC VOLUME 2 ( SECTION P3.10.1 ), THIS PRODUCT SATISFIES PERFORMANCE REQUIREMENT P2.1.1 FOR CONSTRUCTION IN A HIGH WIND AREA.

**CYCLONE ASSEMBLY COMPONENTS**  
Comprising of self drilling screw & one piece cyclone washer  
**TYPE 17 WITH BRA WASHER CYCLONE ASSEMBLY**

FOR METAL BATTENS & TIMBER BATTENS  
14g -10x50/65mm  
(HEAD MARKING B4 & BF)  
Screws are Class 4 in accordance with AS3566



BREMICK BRA - CYCLONE WASHER / SEAL  
ONE PIECE ALUMINIUM / EPDM CYCLONE WASHER



All dimensions mm ( nominal )

Notes covering basis of DTC ( Relevant tests reports etc.)

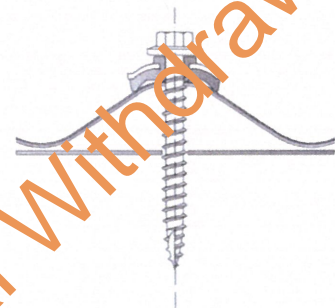
Testing was undertaken at the University of Adelaide. Tested and approved in accordance with the requirements of AS/NZS 1170.2 : 2011 - Structural design actions - Wind actions and the Building Code of Australia ( BCA ) 2015 Specifications B1.2 for the design of buildings in cyclonic areas.

Test Certificate Numbers

EngTest Report No. C090201 - 22/4/2009

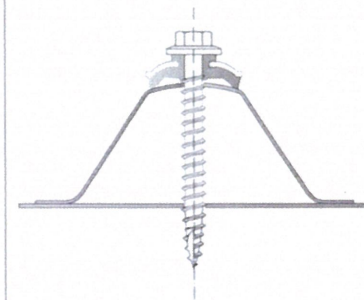
Trevor John & Associates Report No: TR04 - 23/3/2009, TR06 - 20/3/2009 & TR10 - 25/3/2009

**FASTENING:**  
BSL CUSTOM ORB<sup>®</sup>  
0.42mm BMT G550 min.



**FASTENING TO:**  
METAL BATTENS  
0.75mm BMT min.  
G550 min.  
TIMBER BATTENS  
JD3 min.

**FASTENING:**  
BSL TRIMDEK<sup>®</sup>  
0.42mm BMT G550 min.

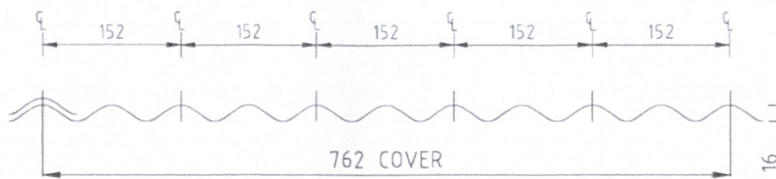


**FASTENING TO:**  
METAL BATTENS  
0.75mm BMT min.  
G550 min.

**CORRUGATED ROOFING PROFILE - BSL CUSTOM ORB<sup>®</sup>**

**FASTENER SPACINGS**

Crest Fastener Locations : Alternate Ribs (152mm Centres)  
Spans Tested : 900mm End, 1150mm Intermediate, 900mm End

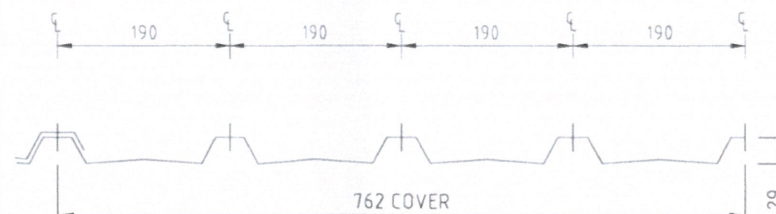


Supports	Crest Fixing	Side Lap Fixing
Metal Battens 0.75mm BMT min. G550 min.	Bremick Type 17 14-10x50 BRA	Bremick Vortex™ Stitch M6.5-13x20 (900 mm Centres min.)
Timber JD3 min.		

**SQUARE RIB ROOFING PROFILES - BSL TRIMDEK<sup>®</sup>**

**FASTENER SPACINGS**

Crest Fastener Locations : Each Rib (190mm Centres)  
Spans Tested : 1200mm End, 1500mm Intermediate, 1200mm End



Supports	Crest Fixing	Side Lap Fixing
Metal Battens 0.75mm BMT min. G550 min.	Bremick Type 17 14-10x65 BRA	Bremick Vortex™ Stitch M6.5-13x20 (900 mm Centres min.)

Product Name

**TYPE 17 BRA Cyclone Assembly**

Product Description : Roofing Fasteners

**T17 14-10x50/65 - BRA Cyclone Assembly  
With Lysaght Profiles**

Manufacturer's Name: **BREMICK Pty Ltd**  
F1, 62 Maddox Street  
Alexandria NSW 2015  
Ph: 02 8332 1501  
Email: sales@bremick.com.au

Design Criteria

Fastener & support spacing to be controlled such that the maximum design loading per fastener or maximum design pressures do not exceed:

Table 1 : Strength Limit State Design Loads per Fastener

Roofing Profile	Test Load ( kN )	C.O.V. ( K <sub>t</sub> )	Design Load ( kN )
Custom Orb <sup>®</sup>	0.88	1.30	0.68
Trimdek <sup>®</sup>	1.05	1.30	0.81

Table 2 : Strength Limit State Design Pressures

Roofing Profile	Test Pressure ( kPa )	C.O.V. ( K <sub>t</sub> )	Design Capacity ( kPa )
Custom Orb <sup>®</sup>	5.36	1.30	4.12
Trimdek <sup>®</sup>	4.04	1.30	3.11

Limitations

This sheet confirms the structural adequacy of the roof sheeting assembly ( sheeting, screw and washer ) when correctly installed and does not extend to the capacity of the batten/purlin. Refer to the sheeting & batten manufacturers data for maximum support spacings. Axial withdrawal capacity for each fastener exceeds the 3.1kN requirements of AS3566.1: 2002 - Self-drilling screws for building and construction industries - General requirements and mechanical properties.

Strength limit state fastener loads have been derived from the test pressures using simplified static analysis with the uniform pressure (load) distribution.

**Accepted for Inclusion**

DTCM ref:

Chairman's Signature:

Chairman's Name:

Date of Approval: 15/05/2017 Expiry Date: 09/12/2020

\*Checking Engineers Certification

Name: **RACHAEL ZEJWER**  
Registration Number: **NPER 11734**  
Date: **6/2/2017**  
Signature: *Rzejwer*

\*\*registered as a structural engineer in Australia

\*Certifying Engineers Certification

Name: **TREVOR JOHN**  
NT Registration Number: **12178ES**  
Date: **23/07**  
Signature: *Trevor John*

\*\*registered as a structural engineer in the Northern Territory

M/191/01  
*[Signature]*  
**STEVEN J ENRICH**