

5. Specification for the number of nails to be used per tile (as in Table 1) is based on cyclic testing carried out by the Cyclone Testing Station, James Cook University Report No TS 129.

From this Test Report the following maximum allowable pressures are presented in Table 2

Table 2: Maximum allowable pressure

No of Nails per Tile	Maximum allowable pressure (kPa)
4	3.6
7	5.5

TILE NAILING DETAILS

Nails used on all Savanna Colortile Roofing Systems should be 50mm x 2.8 mm flathead nails galvanised and painted. Nailing details are shown in Figures 3 and 4. Where 7 nails per tile are required, nail every module. Where 4 nails per tile are required, nail every second module (as shown in Figure 4). Begin nailing at the overlap end (as shown tile B, Figure 3).

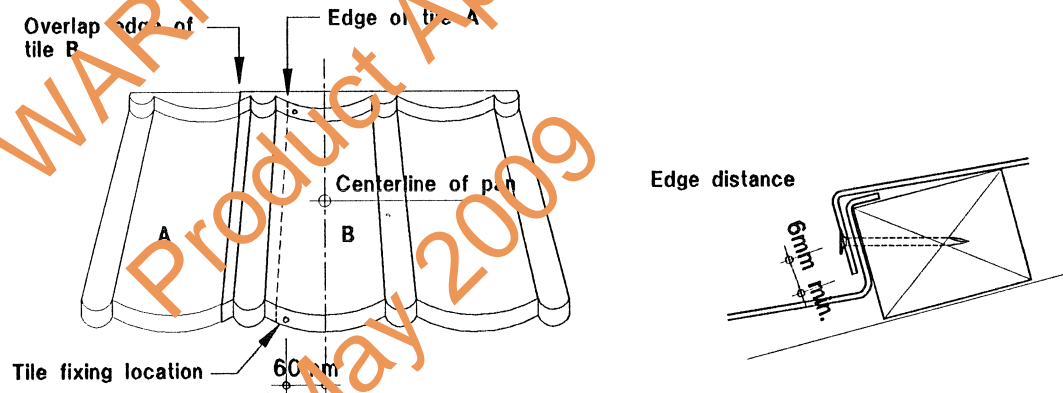


Figure 3

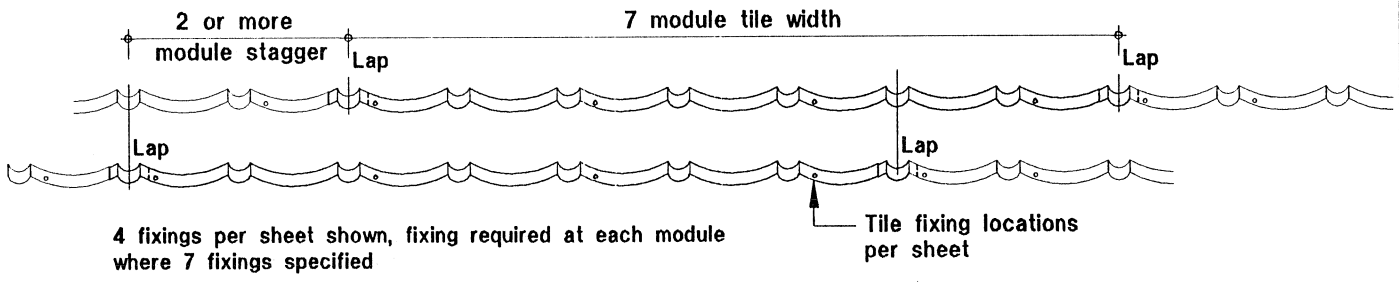


Figure 4

GENERAL NOTE :

1. Live load on roof, including persons walking on roof, must only be applied directly over the roof batten
2. All nail positions should be in the same relationship to tile module shape and batten location as shown in Figures 3 and 4
3. For general installation instructions, refer to the Decra Systems Installation Details, available from Carter Holt Harvey Roofing Australia Pty. Ltd.

WYLKHOLD PTY. LTD. A.C.N. 009 636 060
Trading as

CLARENDON CONSULTING ENGINEERS

CIVIL, STRUCTURAL, HYDRAULIC and PROJECT MANAGEMENT.
SUITE 2 G.P.O. BOX 2944
96 WOODS STREET DARWIN N.T. 0801
DARWIN N.T.
Tel. 089 817500
Fax. 089 411862

CCE-235I

9/1/96

C.S. PASCOE BE. MIEAust.

ASSOCIATION OF CONSULTING ENGINEERS AUSTRALIA

SAVANNA™ COLORTILE ROOFING

Carter Holt Harvey Roofing Australia Pty. Ltd.
ACN 000 040 023

DESIGN DATA SHEET

APPROVED DATE DRAWING NUMBER.

M/102/2 And A