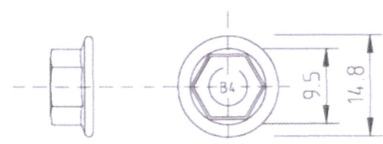
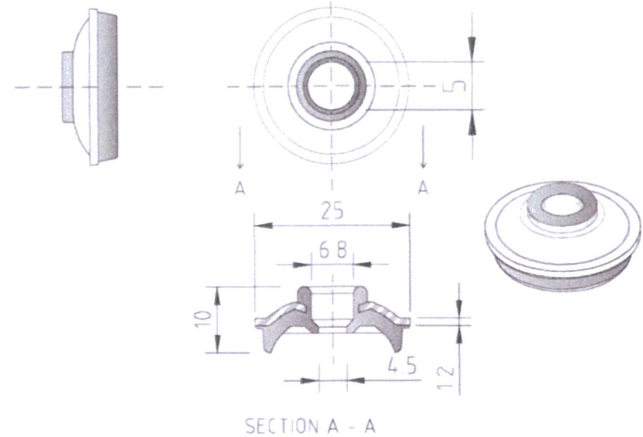


**CYCLONE ASSEMBLY COMPONENTS**  
Comprising of self drilling screw & one piece cyclone washer

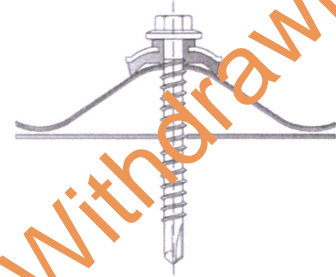
**METAL DRILLING SCREW WITH BRA WASHER  
CYCLONE ASSEMBLY**  
FOR SELF DRILLING INTO STEEL PURLINS  
14-10x50/65mm  
(HEAD MARKING B4 & BF)



**BREMICK BRA - CYCLONE WASHER SEAL**  
ONE PIECE ALUMINIUM / EPDM CYCLONE WASHER

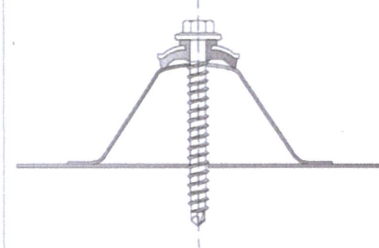


**FASTENING:**  
STRAMIT CORRUGATED  
0.42mm BMT G550 min.



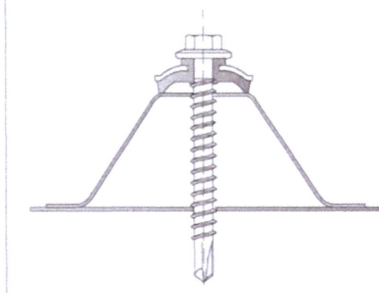
**FASTENING TO:**  
STEEL PURLINS  
1.5mm BMT min. G450 min.

**FASTENING:**  
STRAMIT MONOCLAD  
0.42mm BMT G550 min.



**FASTENING TO:**  
STEEL PURLINS  
1.5mm BMT min. G450 min.

**FASTENING:**  
STRAMIT LONGSPAN  
0.42mm BMT G550 min.

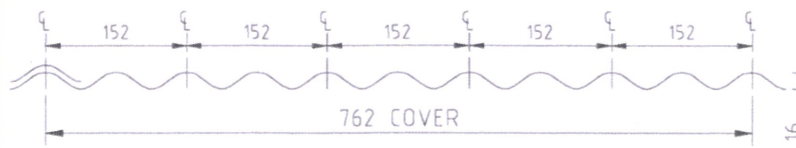


**FASTENING TO:**  
STEEL PURLINS  
1.5mm BMT min. G450 min.

**CORRUGATED ROOFING PROFILE - STRAMIT CORRUGATED**

**FASTENER SPACINGS**

Crest Fastener Locations : Alternate Ribs (152mm Centres)  
Spans Tested : 900mm End, 900mm Intermediate, 900mm End  
Spans Tested : 1500mm End, 1500mm Intermediate, 1500mm End

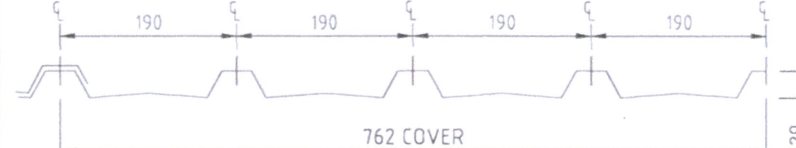


Supports	Crest Fixing	Side Lap Fixing
Steel Purlins G450 1.5mm BMT min.	Bremick Self drilling for metal 14-10x50 - BRA Cyclone Assembly	Bremick Vortex™ Stitch M6.5-13x20 (900mm Centres min.)

**SQUARE RIB ROOFING PROFILES - STRAMIT MONOCLAD**

**FASTENER SPACINGS**

Crest Fastener Locations : Each Rib (190mm Centres)  
Spans Tested : 900mm End, 900mm Intermediate, 900mm End  
Spans Tested : 1500mm End, 1500mm Intermediate, 1500mm End

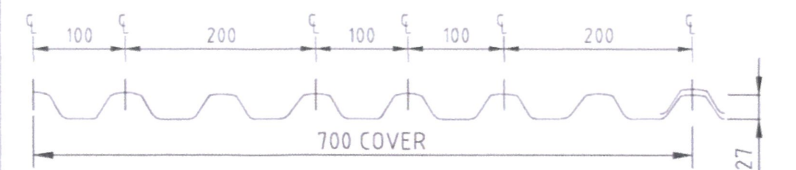


Supports	Crest Fixing	Side Lap Fixing
Steel Purlins G450 1.5mm BMT min.	Bremick Self drilling for metal 14-10x65 - BRA Cyclone Assembly	Bremick Vortex™ Stitch M6.5-13x20 (900mm Centres min.)

**SQUARE RIB ROOFING PROFILES - STRAMIT LONGSPAN**

**FASTENER SPACINGS**

Crest Fastener Locations : As shown below  
Spans Tested : 900mm End, 900mm Intermediate, 900mm End  
Spans Tested : 1500mm End, 1500mm Intermediate, 1500mm End



Supports	Crest Fixing	Side Lap Fixing
Steel Purlins G450 1.5mm BMT min.	Bremick Self drilling for metal 14-10x50 - BRA Cyclone Assembly	Bremick Vortex™ Stitch M6.5-13x20 (900mm Centres min.)

Product Name

**SDM BRA Cyclone Assembly**

Product Description : Roofing Fasteners

**SDM 14 - 10x50/65 - BRA  
Cyclone Assembly With Stramit Profiles**

Manufacturer's Name: **BREMICK Pty Ltd**  
F1, 62 Maddox Street  
Alexandria NSW 2015  
Ph: 02 8332 1501  
Email: sales@bremick.com.au

**Design Criteria**

Fastener & support spacing to be controlled such that the maximum design loading per fastener or maximum design pressures do not exceed:

Table 1 : Strength Limit State Design Loads per Fastener

Roofing Profile	Test Load (kN)	C.O.V. (K <sub>t</sub> )	Design Load (kN)
Corrugated	1.10	1.38	0.80
Monoclad	1.50	1.38	1.09
Longspan	1.42	1.38	1.03

Table 2 : Strength Limit State Design Pressures

Roofing Profile	Tested Span (mm)	Test Pressure (kPa)	C.O.V. (K <sub>t</sub> )	Design Capacity (kPa)
Corrugated	900/ 900/ 900	7.30	1.38	5.29
Corrugated	1500/ 1500/ 1500	4.15	1.38	3.01
Monoclad	900/ 900/ 900	8.00	1.38	5.80
Monoclad	1500/ 1500/ 1500	4.24	1.38	3.07
Longspan	900/ 900/ 900	9.61	1.38	6.96
Longspan	1500/ 1500/ 1500	5.00	1.38	3.62

**Limitations**

This sheet confirms the structural adequacy of the roof sheeting assembly ( sheeting, screw and washer ) when correctly installed and does not extend to the capacity of the batten/purlin. Refer to the sheeting & batten manufacturers data for maximum support spacings.

Strength limit state fastener loads have been derived from the test pressures using simplified static analysis with the uniform pressure (load) distribution.

The fastener is only applicable for use with Stramit cladding products with the conditions in this data sheet.

**Accepted for Inclusion**

DTCM ref: M/819/01

Chairman's Signature:

Chairman's Name: **STEVEN J FAIRLICH**

Date of Approval: 11/05/2017 Expiry Date: 11/05/2022

Testing was undertaken at the James Cook University Cyclone Testing Station. Tested and approved in accordance with the requirements of AS/NZS 1170.2 : 2011 - Structural design actions - Wind actions and NCC 2016 Vol.I Specification B.1.2 and NCC 2016 Vol. II Section 3.10.1.

**Test Certificate Numbers**

JCU Cyclone Testing Station Report No.'s TS 1037, TS 1038 & TS 1039

**\*Checking Engineers Certification**

Name: **RACHAEL ZEUNER**  
Registration Number: **NPER 11734**  
Date: **6/2/2017**  
Signature:

\*registered as a structural engineer in Australia

**\*Certifying Engineers Certification**

Name: **TREVOR JOHN**  
NT Registration Number: **12178 ES**  
Date: **23.2.17**  
Signature:

\*\*registered as a structural engineer in the Northern Territory