

**CYCLONE ASSEMBLY COMPONENTS**

Comprising of self drilling screw & one piece cyclone washer

**VORTEX CYCLONE UNIVERSAL SCREW**

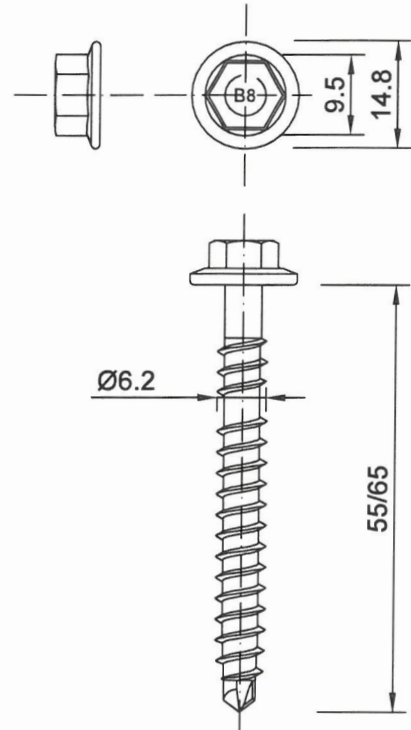
FOR METAL BATTENS, TIMBER BATTENS & STEEL PURLINS

M6.2-13 x 55, 65 & 95mm

(HEAD MARKING B8 & B8V)

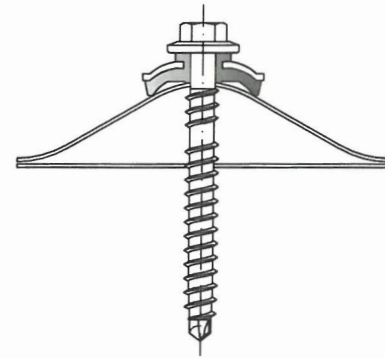
All dimensions mm ( nominal )

Screws are Class 4 in accordance with AS3566



**FASTENING:**

METROLL CORODEK  
 0.42mm BMT G550 min.



**FASTENING TO:**

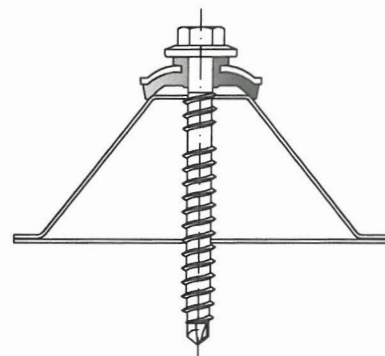
STEEL PURLINS  
 1.5mm BMT min. G450 min.

METAL BATTENS  
 0.75mm BMT min. G550 min.

TIMBER BATTENS  
 MGP 10

**FASTENING:**

METROLL TRIMCLAD  
 0.42mm BMT G550 min.



**FASTENING TO:**

STEEL PURLINS  
 1.5mm BMT min. G450 min.

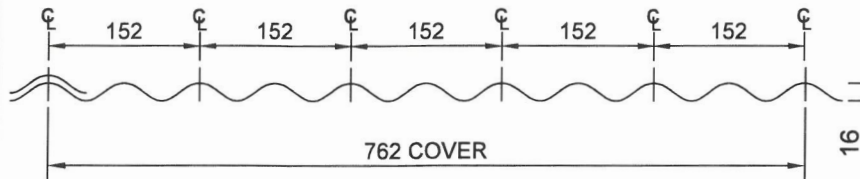
METAL BATTENS  
 0.75mm BMT min. G550 min.

TIMBER BATTENS  
 MGP 10

**CORRUGATED ROOFING PROFILE**

**FASTENER SPACINGS**

Crest Fastener Locations : Alternate Ribs (152mm Centres)



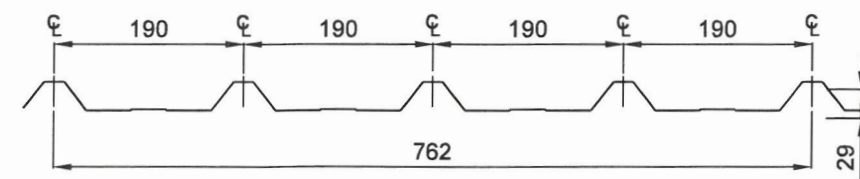
**METROLL CORODEK ROOF CLADDING - ULTIMATE LIMIT STATE DESIGN PRESSURES (kPa)**

| Span Type | Maximum Design Pressure (kPa) for Span L (mm) |      |      |      |      |      |
|-----------|---|------|------|------|------|------|
|           | 600   | 750  | 900  | 1200 | 1500 | 1800 |
| Internal  | 5.98  | 4.64 | 3.75 | 2.63 | 2.04 | 1.65 |
| Equal     | 5.29  | 4.07 | 3.31 | 2.40 | 1.85 | 1.60 |
| Double    | 4.23  | 3.26 | 2.65 | 1.92 | 1.48 | 1.20 |

**SQUARE RIB ROOFING PROFILES**

**FASTENER SPACINGS**

Crest Fastener Locations : Each Rib (190mm Centres)



**METROLL TRIMCLAD ROOF CLADDING - ULTIMATE LIMIT STATE DESIGN PRESSURES (kPa)**

| Span Type | Maximum Design Pressure (kPa) for Span L (mm) |      |      |      |      |      |
|-----------|---|------|------|------|------|------|
|           | 600   | 900  | 1200 | 1500 | 1800 | 2100 |
| Internal  | 5.49  | 3.29 | 2.19 | 1.75 | 1.46 | 1.25 |
| Equal     | 4.75  | 2.83 | 2.00 | 1.59 | 1.33 | 1.14 |
| Double    | 3.80  | 2.27 | 1.60 | 1.28 | 1.06 | 0.91 |

Product Name

**Vortex™ BRA Cyclone Assembly**

Product Description: Roofing Fasteners

**M6.2-13 x 55/65 - BRA Cyclone Assembly with Metroll Profiles**

Manufacturer's Details:

**BREMICK Pty Ltd**  
 F1, 62 Maddox Street  
 Alexandria NSW 2015  
 Ph: 02 8332 1501  
 Email: sales@bremick.com.au

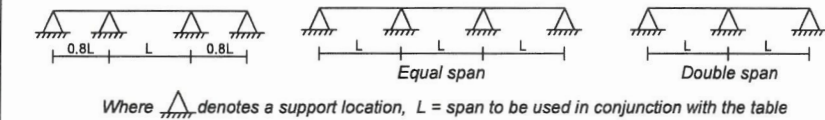
Design Criteria

Fastener & support spacing to be controlled such that the maximum design loading per fastener or maximum design pressures do not exceed:

Table 1 : Strength Limit State Design Loads per Fastener

| Roofing Profile | Test Load (kN) | C.O.V. (K) | Design Load (kN) |
|-----------------|----------------|------------|------------------|
| Corodek         | 0.73           | 1.38       | 0.53             |
| Trimdek         | 0.83           | 1.38       | 0.60             |

Description of span types in tables refer to the following support and geometry configurations:



Limitations

1. This sheet confirms the structural adequacy of the roof sheeting assembly ( sheeting, screw and washer ) when correctly installed and does not extend to the capacity of the batten/purlin. Refer to the sheeting & batten manufacturers data for maximum support spacings. Axial withdrawal capacity for each fastener exceeds the 3.1kN requirements of AS3566.1: 2002 - Self-drilling screws for building and construction industries - General requirements and mechanical properties.
2. Capacity of assembly pullover may be less than sheeting span capacity. Adjust sheeting spans accordingly.
3. Strength limit state fastener loads have been derived from the test pressures using simplified static analysis with the uniform pressure (load) distribution.
4. The fastener is only applicable for use with Metroll cladding products with the conditions in this data sheet.

Notes to tables:

1. Italic denotes spans that exceed foot traffic limitations
2. Maximum Corodek spans to suit foot traffic are 1350mm
3. Maximum Trimclad spans to suit foot traffic are 1350mm

**Accepted for Inclusion in Deemed to Comply Manual**

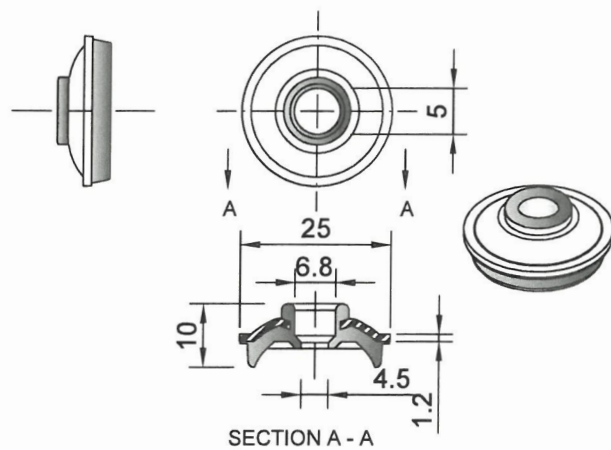
DTCM drawing number: M/391/01

Chairperson Signature: *Elisha Harris*

Chairperson Name: Elisha Harris

Date of Approval: 04/09/2025 Expiry Date: 04/09/2030

**BREMICK BRA - CYCLONE WASHER / SEAL**  
 ONE PIECE ALUMINIUM / EPDM CYCLONE WASHER



Test Certificates

JCU Cyclone Testing Station Report TS1069 Cyclic Simulated Wind Load Strength Testing of Roofing Screw and 25mm BRA Washer Assemblies for Roofing Applications, 26th June 2017

Checking Engineer

Name: **LEO NOIKOS**  
 Registration Number: **70762**  
 Date: **11/8/2025**  
 Signature: *[Signature]*

Must be an Australian registered structural engineer.

Certifying Engineer

Name: **RACHAEL ZEUNER**  
 NT Registration Number: **309710ES**  
 Date: **11/8/2025**  
 Signature: *[Signature]*

Must be a registered structural engineer in the Northern Territory