

SPECIFICATION

SPEED DECK (mark III)

ORDERING RECOMMENDATIONS

LENGTH

Speed Deck is custom cut to project requirements to a 5mm tolerance, in lengths to 18m, or as determined by local transport regulations. Site measure the length of Speed Deck sheets as indicated in Fig. 1 from the inside of the barge board (high end) to the outside of the fascia board (low end). To this measurement "A" add 50mm for overhang into the gutter.

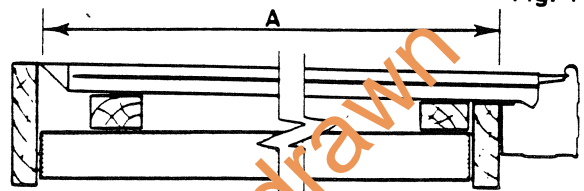


Fig. 1

WIDTH

The effective cover of Speed Deck is 508mm per sheet. Site measure from the inside of each barge board the total side cover required as in Fig. 2, measurement "B". Refer to the Speed Deck Cover Calculator below to assess the number of sheets required for the given measurement.

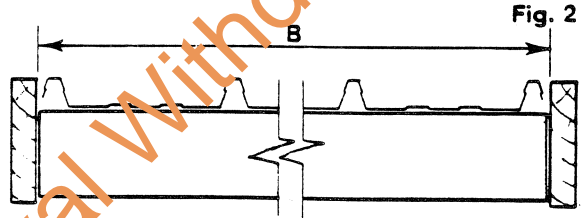


Fig. 2

SPEED DECK COVER CALCULATOR (NOTE: Add 40mm for first rib of cover.)

No. of Trays	1	2	3	4	5	6	7	8	9	10	11	12
Effective Cover	508	1-016	1-524	2-032	2-540	3-048	3-556	4-064	4-572	5-080	5-588	6-096
No. of Trays	13	14	15	16	17	18	19	20	21	22	23	24
Effective Cover	6-604	7-112	7-620	8-128	8-636	9-144	9-652	10-160	10-668	11-176	11-684	12-192
No. of Trays	25	26	27	28	29	30	31	32	33	34	35	36
Effective Cover	12-700	13-208	13-716	14-224	14-732	15-240	15-748	16-256	16-764	17-272	17-780	18-288
No. of Trays	37	38	39	40	41	42	43	44	45	46	47	48
Effective Cover	18-796	19-304	19-812	20-320	20-828	21-336	21-844	22-352	22-860	23-368	23-876	24-380
No. of Trays	49	50	51	52	53	54	55	56	57	58	59	60
Effective Cover	24-880	25-388	25-896	26-404	26-912	27-420	27-928	28-444	28-956	29-464	29-972	30-480

ORDERING

Speed Deck Trays. State Speed Deck material and thickness required, number of sheets and their respective lengths.

eg Speed Deck Galv. Steel 0.77mm 80 Sheets 11.505m
Speed Deck Galv. Steel 0.17mm 24 Sheets 9.910m.

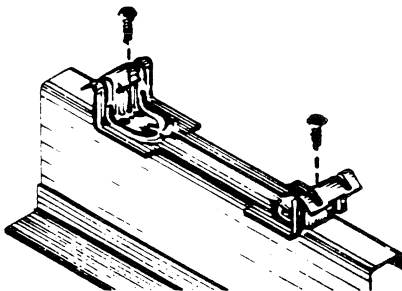
Fixing Clips. Order the number of clips required by multiplying the number of Speed Deck Sheets by the number of purlins crossed.

eg. 80 Sheets x 10 purlins = 800
24 Sheets x 9 purlins = 216 } Total clips, 1016 required.

Fasteners. To steel up to 4.5mm.
Deutscher Tek - 10 x 16mm.

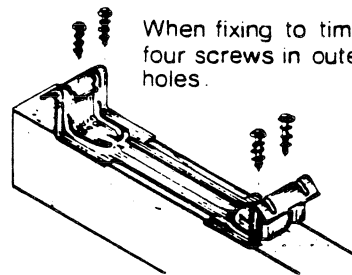
To steel over 4.5mm.
Deutscher Type 23 - 10 x 16mm

To timber
Deutscher Type 17 - 10 x 25mm.



Two fasteners per clip use centre (3mm) hole.

Four fasteners per clip use outer (4mm) holes.



When fixing to timber use four screws in outer (4mm) holes.

HOUSE DETAILS

OWNER

LOT No

STREET

DISTRICT

TERRAIN CATEGORY
MULTIPLIER.

FIXING OF

STRAMIT "SPEED DECK" ROOFING

IN THE DARWIN AREA

SPECIFICATION SHEET

**NORTHERN TERRITORY
CYCLONIC AREAS**

DRAWING No.

M/109/7

Accptd.

Date

4/6/78