

This product is a compilation of data holdings from (and not restricted to) NT of Environment, Planning and Logistics, Dept. of Housing and Community Development, Power and Water Corporation and the Department of Planning and Infrastructure.

No warranty has ever been made as to the accuracy of the data, errors and omissions may occur. It is recommended that concerning the accuracy of the data, users should consult with the engineering bodies or departments regarding the accuracy and currency of the data.

**General enquiries, corrections, updates, errors and omissions:**  
Lands Planning, Department of Infrastructure, Planning and Logistics  
TEL: (08) 8699 8963, Email: [planning@nt.gov.au](mailto:planning@nt.gov.au)

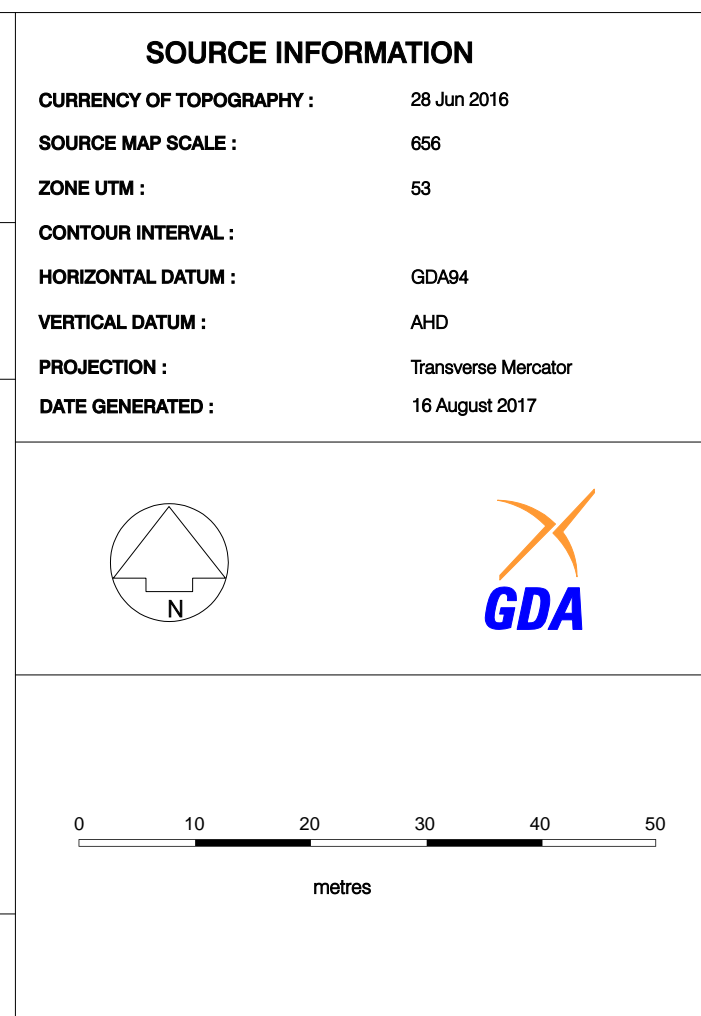
**Topographic Information:**  
Office of the Surveyor General  
Dept. of Infrastructure, Planning and Logistics  
TEL: (08) 8699 6631  
Email: [landinfo@nt.gov.au](mailto:landinfo@nt.gov.au)

**Power, Water or Sewer Information:**  
Power and Water Corporation  
TEL: 1800 600 365

**Geological Areas Protection Authority:**  
The Registrar  
Geoprocess Areas Protection Authority  
TEL: (08) 8999 4384  
Email: [enquiries@apwa.gov.au](mailto:enquiries@apwa.gov.au)

**Housing Infrastructure Information:**  
Planning Housing  
Dept. of Housing and Community Development  
TEL: (08) 8699 8814  
Email: [info@hcg.gov.au](mailto:info@hcg.gov.au)

**Other Information:**  
Other online spatial products are supplied from AusMap Pty. and have locations outlined on the AUSMAP ONLINE map. These general location outlines are provided to the user as a guide only. 1:100,000 scale maps, aerial and power information and infrastructure information for development control, 1:50,000 scale maps, aerial and power information and infrastructure information for development control



SERVICED LAND AVAILABILITY PROGRAM

SLAP Map

**Mara (Borrooloola Town Camp)**

Borrooloola Town Camp

Roper Gulf Shire Council

Community ID : 222