

Prepared and produced by the Spatial Data & Mapping, Land and Water Division, Department of Natural Resources, Environment, The Arts and Sport Northern Territory of Australia

This product and all material forming part of it is copyright belonging to the Northern Territory of Australia. You may use this material for your personal, non-commercial use or use it within your organisation for non-commercial purposes, provided that an appropriate acknowledgement is made and the material is not altered in any way. Subject to the fair dealing provisions of the Copyright Act 1968, you must not make any other use of this product (including copying or reproducing it or part of it in any way) unless you have the written permission of the Northern Territory of Australia to do so.

The Northern Territory of Australia does not warrant that the product or any part of it is correct or complete and will not be liable for any loss damage or injury suffered by any person as a result of its inaccuracy or incompleteness.

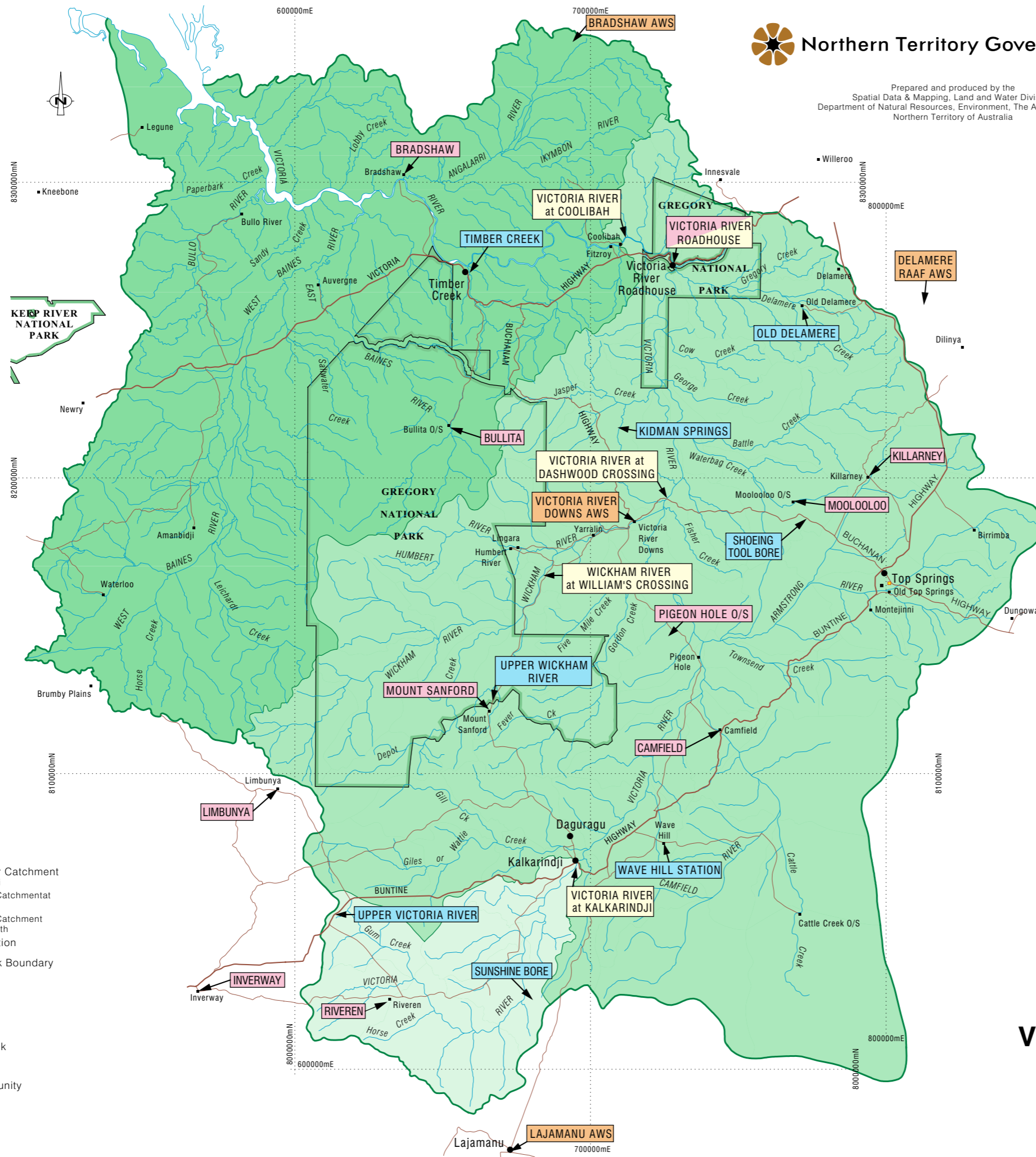
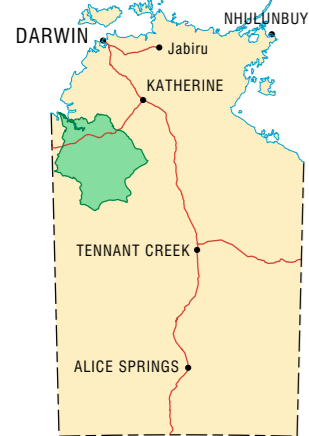
This map was produced on the Geocentric Datum of Australia 1994 (GDA 94)

Kilometres 10 0 10 20 30 40 50 kilometres

Transverse Mercator Projection, Map Grid of Australia (MGA) Zone 52 Horizontal Datum: Geocentric Datum of Australia (GDA) 1994

Design File: Victoria-R\_Flood-Warn\_m52 Plot File: Victoria-R\_Flood-Warning\_Stn-Name

**LOCALITY PLAN**  
Not to Scale



- BOM - Rainfall - Daily Read Station
- BOM - Rainfall - Automatic Weather Station
- BOM - Rainfall - Pluviometer Station
- NRETAS - River Height & Rainfall - Gauging Station

Notes: BOM - Bureau of Meteorology  
NRETAS - Department of Natural Resources, Environment, The Arts and Sport

- Victoria River Catchment at Kalkarindji
- Victoria River Catchment at Coolibah
- Victoria River Catchment at River mouth
- Station Location
- National Park Boundary
- Highway
- Major Road
- Minor Road
- River or Creek
- Coastline
- Victoria River Town/Community
- Humbert River Homestead

**VICTORIA RIVER CATCHMENT FLOOD WARNING MONITORING STATIONS**  
November 2008

For further information contact:  
Principal Engineer, Water Resources, Land and Water Division,  
Department of Natural Resources, Environment, The Arts and Sport  
Ph. (08) 8999 3606, Fax. (08) 8999 3666  
Goyder Centre, Chung Wah Terrace, Palmerston, Northern Territory of Australia.