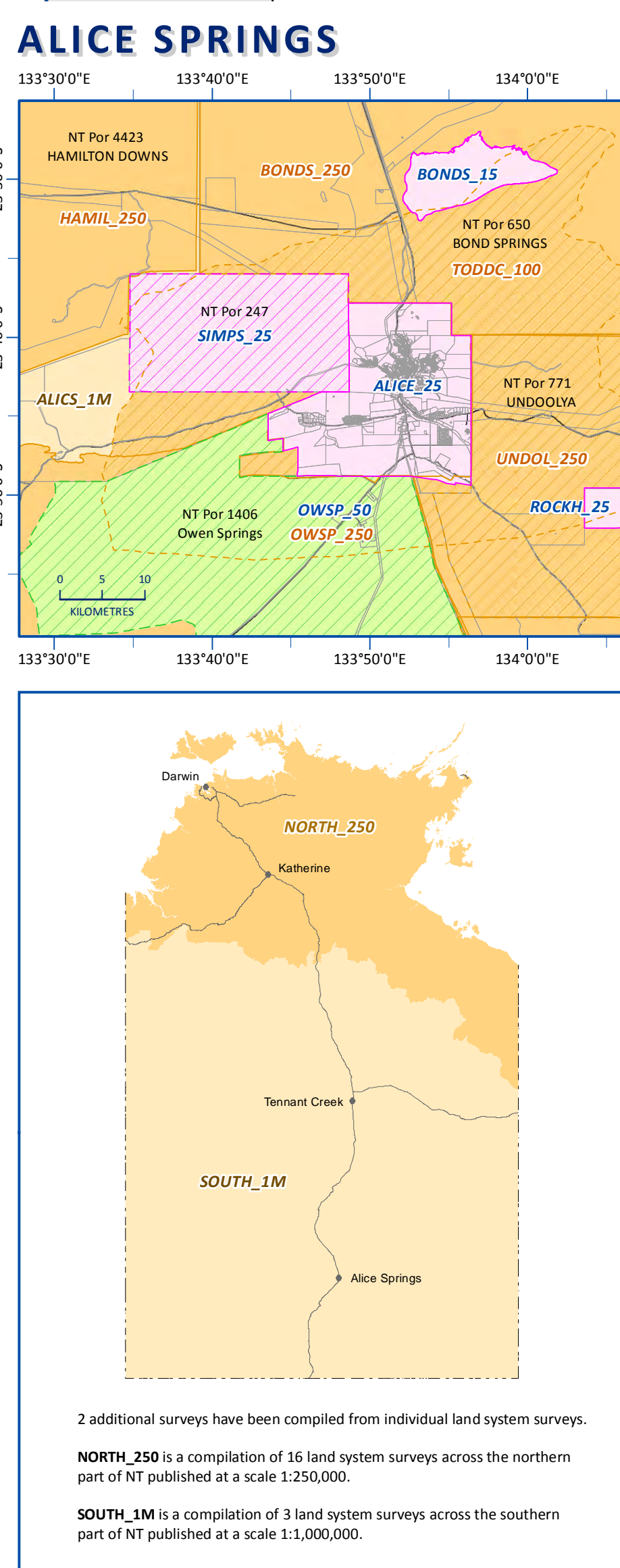
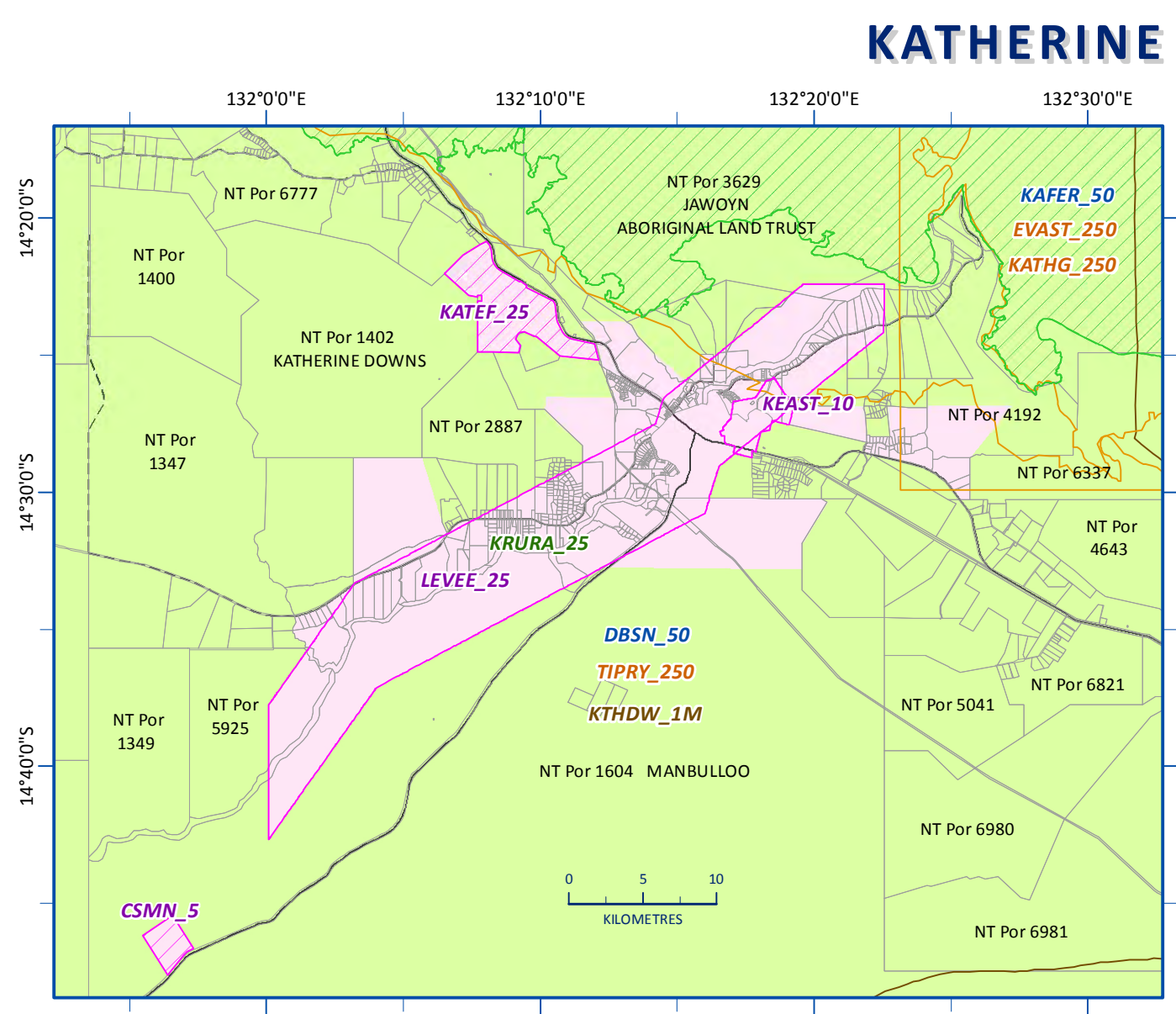
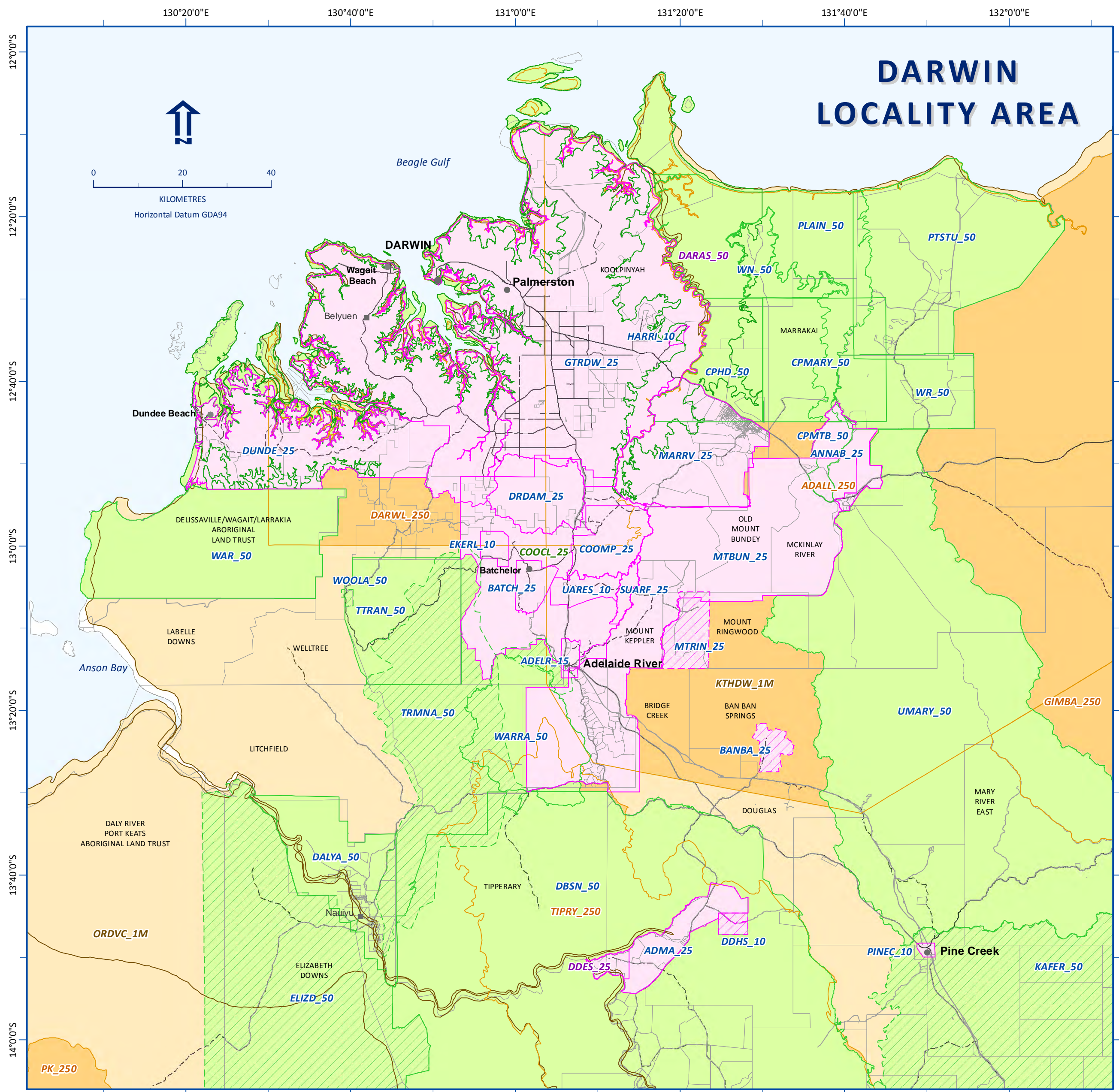
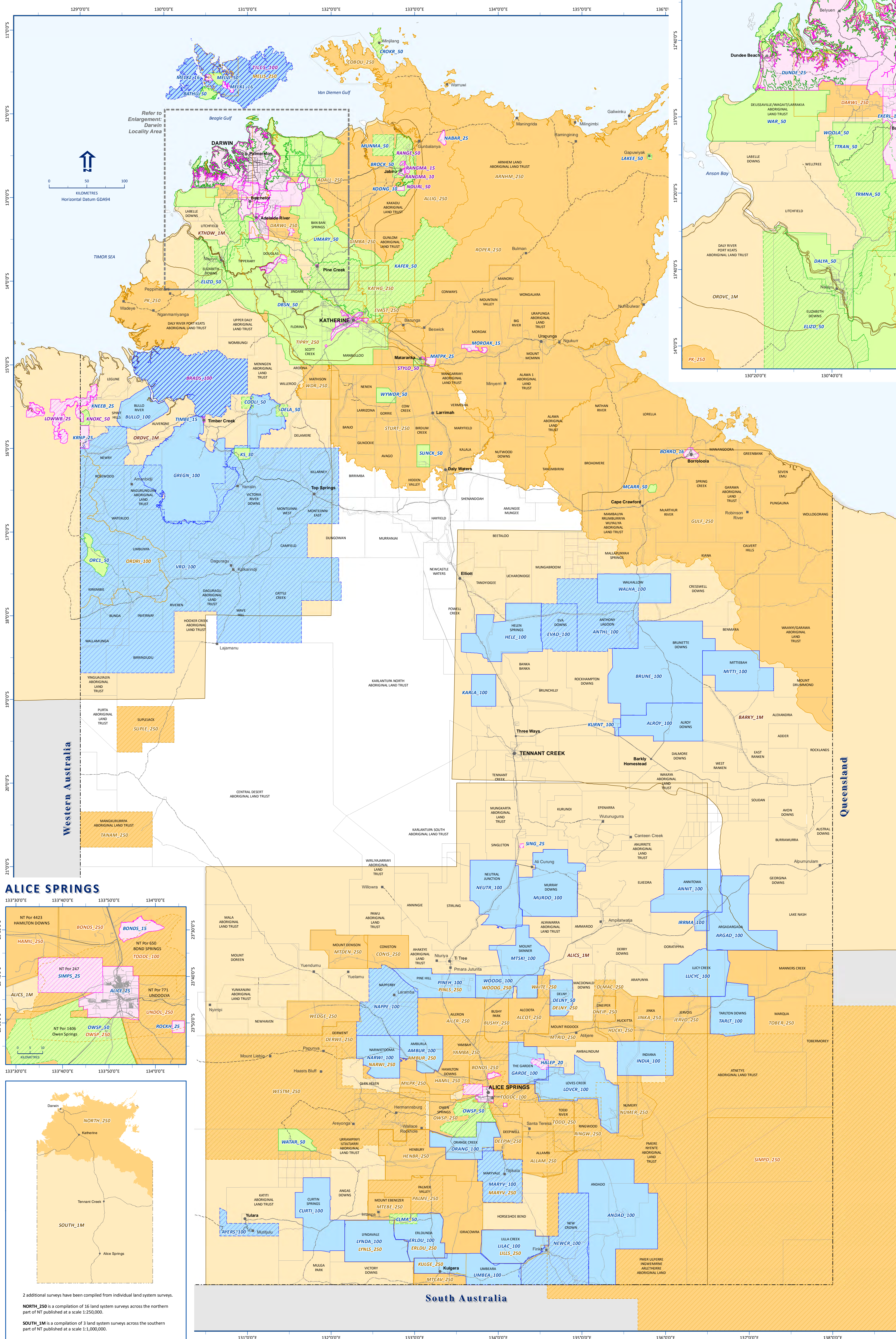


# NORTHERN TERRITORY LAND RESOURCES SURVEY MAPPING STATUS

24th July, 2012

For more information, contact:  
Manager, Land and Vegetation Unit,  
Natural Resources Division  
Department of Natural Resources, Environment, The Arts and Sport (NRETAS)  
Ph: (08) 8999 4443, Fax: (08) 8999 3667  
Gwyler Centre, 25 Chung Wah Terrace, Palmerston  
Northern Territory  
Website: [www.nt.gov.au/nretas](http://www.nt.gov.au/nretas)  
select Natural Resource Management, then Soil and Landforms

**Northern Territory Government**  
© Northern Territory of Australia  
The Northern Territory of Australia does not warrant that the product or any part of it is correct or complete and will not be liable for any loss, damage or injury suffered by any person as a result of its inaccuracy or incompleteness.  
You are encouraged to notify any error or omission in the material by calling 8999 4443.



**LEGEND** Survey areas are displayed on this map in layers from broadest scale to finest scale on top.

FINE SCALE SURVEYS		BROAD SCALE SURVEYS	
Survey Scale	Complete / Not Complete	Survey Scale	Complete / Not Complete
1:5,000 - 25,000	Complete (Pink), Not Complete (Pink with diagonal lines)	1:100,000 - 250,000	Complete (Orange), Not Complete (Orange with diagonal lines)
1:30,000 - 50,000	Complete (Green), Not Complete (Green with diagonal lines)	1:1,000,000	Complete (Light Orange), Not Complete (Light Orange with diagonal lines)
1:100,000	Complete (Blue), Not Complete (Blue with diagonal lines)	1:2,000,000 Atlas Australian soils not displayed	

Survey Type	Survey Code display	Survey Type	Survey Code display
Land Unit	DBSN_50	Land System	ROPER_250
Land Other	COOCL_25	Land System	ROPER_250
Soil	LEVEE_25	Land System	ROPER_250
		Land System	ORDVC_1M

**SURVEY CODE**  
NRETAS uses a Survey Code to identify each land resource survey.  
Example: DBSN\_50  
DBSN refers to the survey name "Land Resources of the Daly Basin"  
\_50 refers to the survey scale of 1:50,000  
A complete listing of Survey Codes and Survey Names is available from NRETAS.

**SURVEY STATUS DEFINITIONS**  
The survey status refers to the completion of land resource projects undertaken by the Land and Vegetation Unit. The status definitions relate to the completion of:  
\* field survey work,  
\* the accompanying technical report,  
\* the final land resource data in a spatial data format, and  
\* an associated refined map product.  
Each survey has been displayed on this map as either Complete or Not Complete.

**COMPLETE**  
**Complete (Spatial)**  
Spatial data with legend, accompanying report and metadata completed  
A refined map product is also usually completed  
Spatial data is stored on the corporate spatial server  
Digital data products available for public use

**NOT COMPLETE**  
**Complete (Not Spatial)**  
Report is completed, maps may be included in the report  
Spatial data or refined digital map products have not been created  
Existing products available for public use

**Survey in Progress**  
Spatial data currently being edited or significant revision is planned  
Spatial data is not stored on corporate spatial server  
Digital data products are NOT available for public use

**MORE INFORMATION ABOUT LAND RESOURCE SURVEYS**  
Use our web mapping application NRETAS MAPS for Land Resource survey details  
[www.nt.gov.au/nretasmaps](http://www.nt.gov.au/nretasmaps)

**Map Layers:** Open the folder Land > Land Units  
Turn on Land Unit Survey Boundaries (tick the box)  
Make this the Active Layer (icon on left of layer name is aqua blue)

**Zoom to your area of interest on the map.**  
Use the i (identify) tool and click inside a survey boundary.  
The resulting record will provide survey details and web links to the survey Metadata and the Survey Technical Report.

**TECHNICAL REPORTS**  
Technical Reports are archived in the Northern Territory Library, download as a PDF from:  
<http://www.territorystories.nt.gov.au/handle/10070/138466/advanced-search>

**LAND RESOURCE SPATIAL DATA**  
Spatial data for COMPLETED land resource surveys is available from NRETAS.  
Download a Digital Data Request Form  
<http://www.nretas.nt.gov.au/home/nretasmaps>

2 additional surveys have been compiled from individual land system surveys.  
**NORTH\_250** is a compilation of 16 land system surveys across the northern part of NT published at a scale 1:250,000.  
**SOUTH\_1M** is a compilation of 3 land system surveys across the southern part of NT published at a scale 1:1,000,000.