

NOTE: Since the original Range Condition Assessment surveys were carried out in 1980, 1987 and 1993, the property boundaries and tenure has changed and both Waite River Station and Alcoota Station are now one land parcel - NT Portion 4029 Alkwert Aboriginal Land Trust.

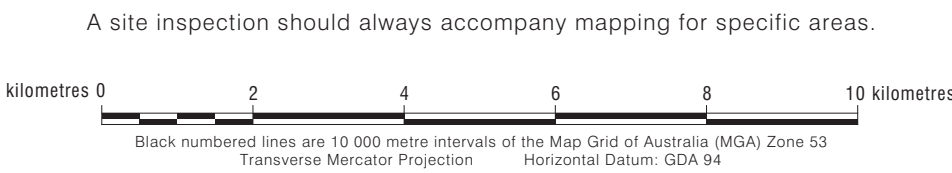


LAND RESOURCES

NT Portion 4029 - ALKWERT ABORIGINAL LAND TRUST

(previously Alcoota Station & Waite River Station)

For further information contact:
 Manager, Land Assessment, Rangelands Division, Department of Land Resource Management (DLRM)
 Ph. (08) 8999 4443 Email: rangelands@nt.gov.au Web: www.lrm.nt.gov.au
 Level 3, Goyder Centre, 25 Chung Wah Terrace, Palmerston, Northern Territory of Australia.
 Land Resource information has been derived from aerial photograph interpretation and field data collection describing landform, soil and vegetation. Mapping has been collected at a nominal scale of between 100k and 250k. Enlarging this map beyond this nominal scale will not provide further detail.



A site inspection should always accompany mapping for specific areas.
 Black numbered lines are 10 000 metre intervals of the Map Grid of Australia (MGA) Zone 53 Transverse Mercator Projection
 GDA 94
 This map was produced on the Geocentric Datum of Australia 1994 (GDA 94)
 Cartography by Spatial Data and Mapping, Water Resources Division,
 Department of Land Resource Management, Northern Territory of Australia November 2015
 Web: www.lrm.nt.gov.au/nmapst Map Reference: NT-Port-4029 Alkwert-ALT-Land-Resources

BIBLIOGRAPHIC REFERENCES

- | | |
|--|---|
| Bastin, G (1980)
RANGE CONDITION ASSESSMENT
REPORT: ALCOOTA STATION
Dept of Primary Production, 1980,
Alice Springs NT. | Russel, G, McGlasson, M (1987)
RANGE CONDITION ASSESSMENT
REPORT: WAITE RIVER STATION
Dept of Primary Production, 1987,
Alice Springs NT. |
| Last, N, White, A, Bohning, G. (1993)
RANGELAND CONDITION ASSESSMENT
REPORT: ALCOOTA
Dept of Primary Industry, 1993,
Alice Springs NT. | |

WAITE
RIVER
STATION

NT PORTION 4029
ALKWERT ABORIGINAL
LAND TRUST.

ALCOOTA
STATION

© Northern Territory of Australia

This product and all material forming part of it is copyright belonging to the Northern Territory of Australia. You may use this material for your personal, non-commercial use or use it within your organisation for non-commercial purposes, provided that an appropriate acknowledgement is made and the material is not altered in any way.

Subject to the fair dealing provisions of the Copyright Act 1968, you must not make any other use of this product (including copying or reproducing it or part of it in any way) unless you have the written permission of the Northern Territory of Australia to do so.

The Northern Territory of Australia does not warrant that the product or any part of it is correct or complete and will not be liable for any loss or damage or injury suffered by any person as a result of its inaccuracy or incompleteness.

LAND SYSTEM DESCRIPTIONS - ALCOOTA STATION

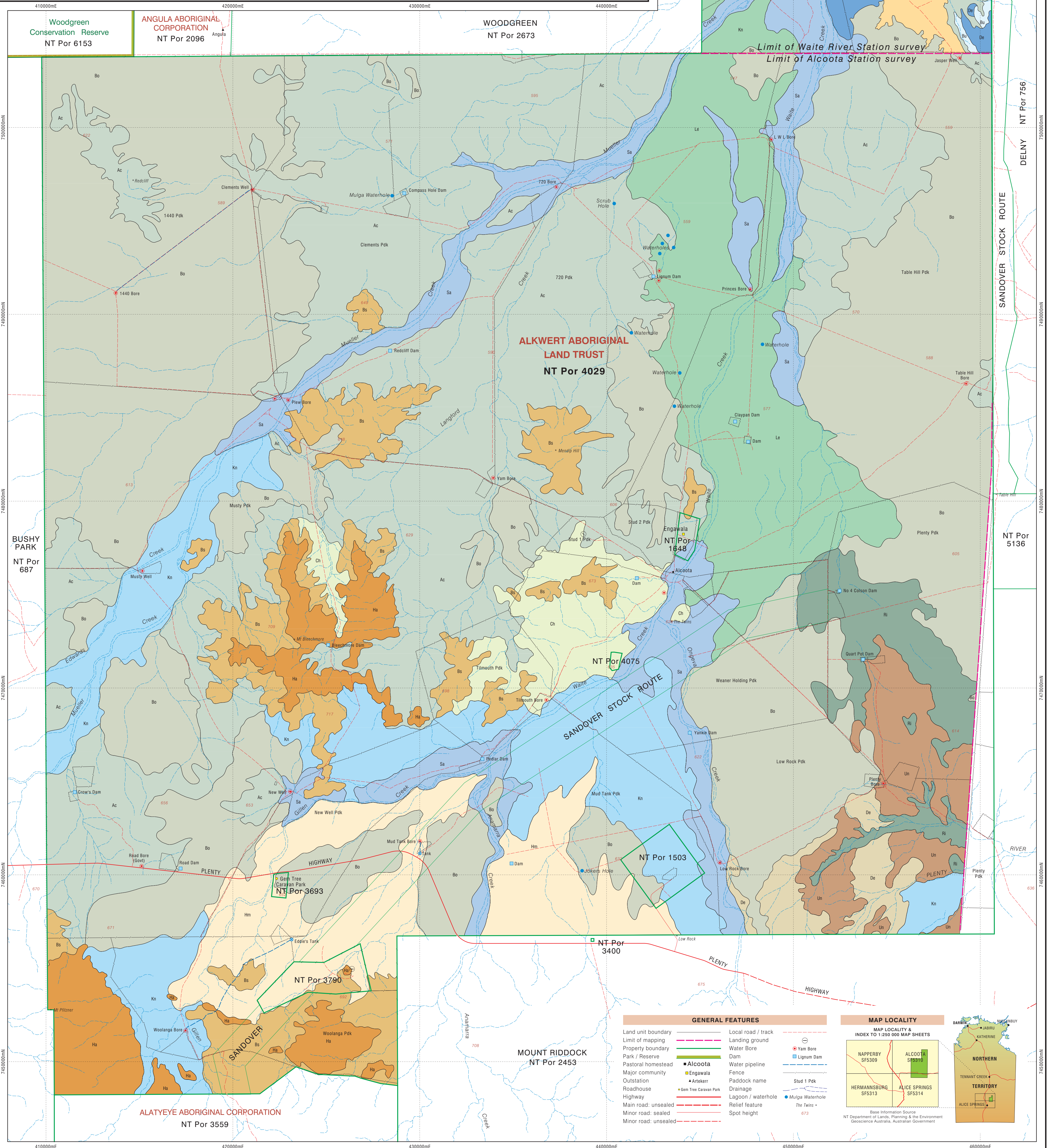
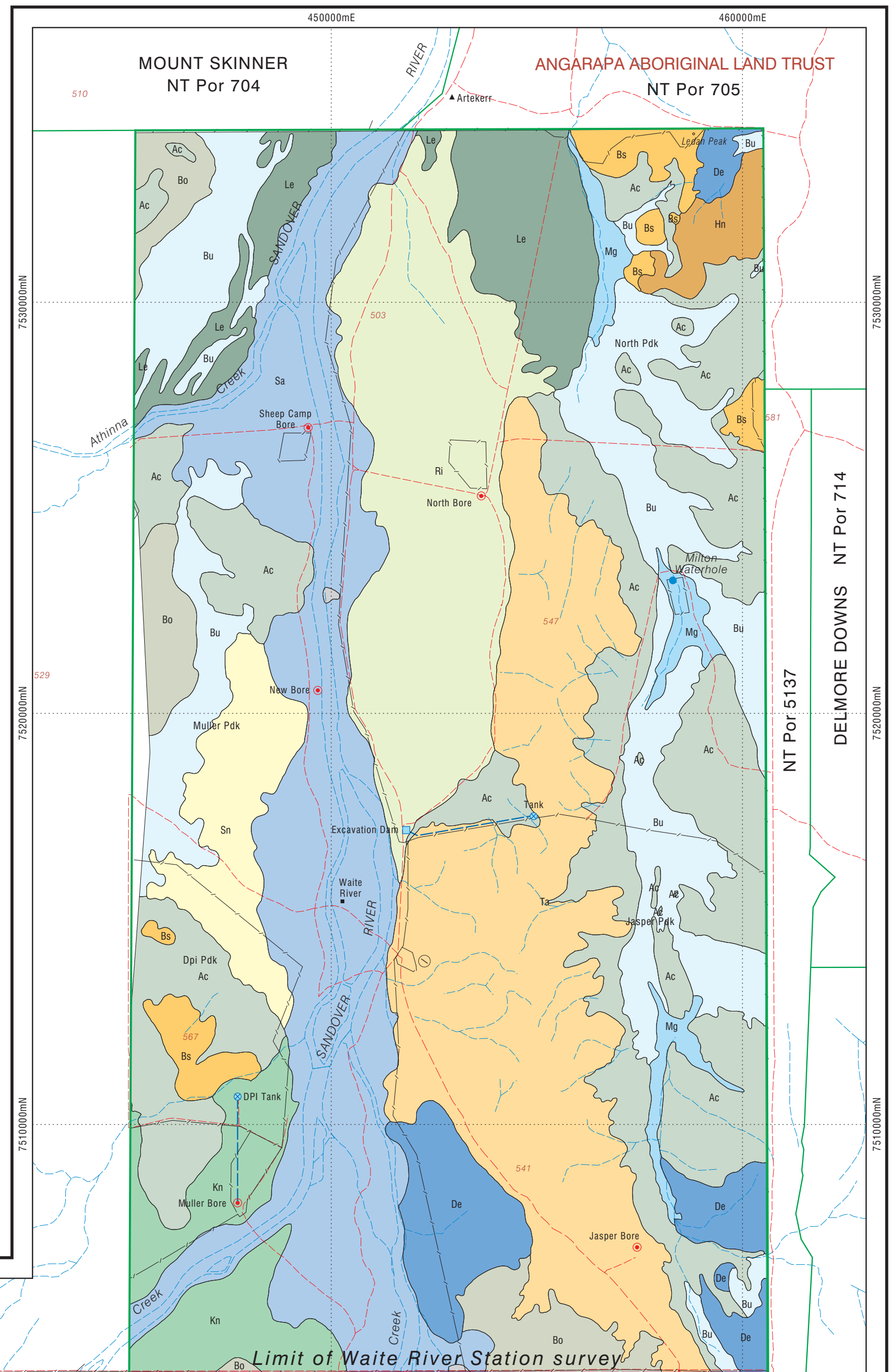
Alcoota	Ac	Erosional plains. Gently undulating plains. Open woodland with whitewood, bloodwood, mulga and witchetty bush over annual and scattered perennial grasses. Small areas of calcareous shrubby grassland of scattered witchetty bush, ironwood and cassias over oat grass and forbs. Other small areas of mulga over annual grasses.
Boen	Bo	Erosional plains. Gently undulating red earth plains. Mulga over either annual (woollyoat and mulga grasses) or hard perennial grasses (woollybutt, wire and kerosene grasses). Witchetty bush and perennial cotton panic grass in some areas.
Bond Springs	Bs	Range and hill country. Bold rocky hills to low stony hills and undulating plains. Shallow gritty soils, with scattered witchetty bush and mulga over woollyoat grass. Kerosene grass and occasional perennial grasses. Curly windmill grass along lower watercourses. Small areas of calcareous soils carrying witchetty bush over oatgrass and forbs.
Chisholm	Ch	Erosional plains. Dissected plains. Red earth soils with mulga over woollyoat and mulga grasses. Small areas of calcareous shrubby grassland with witchetty bush and mulga over oat grass and forbs. Perennial grasses in depressions.
Delny	De	Erosional plains. Dissected penneplains down to lower erosional plains with soils varying from coarse stony, to red earths, calcareous earths and texture contrast soils. Mulga, witchetty bush and georgina gidyea over annual grasses and forbs. Curly windmill grass and neverfail on valley floors.
Hamilton	Hm	Alluvial fans and floodouts. Gently sloping sandy plains flanking ranges and large hills. Open woodland of whitewood, supplejack, ironwood, mulga, witchetty bush and cassias over annual woollyoat and mulga grasses and palatable perennial grasses. Small areas of cottonbush flat floodplain with perennial grasses on erodible texture contrast soils.
Harts	Ha	Range and hill country. Mountainous areas. Mainly bare rock. Small pockets with shallow stony soils growing sparse shrubs and low trees over scattered grasses and forbs.
Kanandra	Kn	Alluvial fans and floodouts. Alluvial fans and plains with coarse-textured alluvial soils carrying sparse to dense cover of trees and shrubs over kerosene grass, woollybutt, annual grasses (woollyoat, bunched kerosene) and forbs. Small areas of neverfail, cottonbush or curly windmill grass in drainage basins.
Leahy	Le	Broad alluvial plains. Sandy alluvial plains with loose-surfaced red clay sand. Mainly dense mulga and witchetty bush over annual grasses such as woollyoat grasses and bunched kerosene grass and forbs.
Ringwood	Ri	Broad alluvial plains. Stable calcareous alluvial plains, mainly calcareous earths with georgina gidyea and witchetty bush over annual grasses (oatgrass, bunched kerosene grass) and forbs. Some areas of red earths with mulga or witchetty bush over woollybutt, annual grasses and forbs. Small open areas of red clay plain with neverfail and Mitchell Grass.
Sandover	Sa	Alluvial fans and floodouts. Sandy river plains with a range of coarse-textured alluvial soils to red earths and texture contrast soils. Sandy open woodland with ironwood, mulga, witchetty bush, corkwood, eucalyptus spp. (and occasionally gidyea) over woollyoat and kerosene grass, curly windmill grass and forbs.
Undippa	Un	Alluvial fans and floodouts. Gilgaided clay plains with neverfail and Mitchell grasses. Flinders and button grasses present after summer rains.

LAND SYSTEM DESCRIPTIONS - WAITE RIVER STATION

Alcoota	Ac	Undulating plains with open woodland.
Boen	Bo	Gently undulating plains with groved mulga
Bond Springs	Bs	Low rocky hills with witchetty bush
Bushy Park	Bu	Broad drainage depression with dense mulga
Delny	De	Broken watercourse country with gidyea
Hann	Hn	Low ranges carrying spinifex
Kanandra	Kn	Sandy alluvial plains with mulga and ironwood
Leahy	Le	Sandy alluvial plains with mulga and gidyea
McGrath	Mg	Minor floodplains with coolibah, gidyea and mulga
Ringwood	Ri	Alluvial plains with gidyea
Sandover	Sa	Sandy floodplains and levees
Singleton	Sn	Hummocky spinifex sandplain
Table Hill	Ta	Low limestone plateau with open woodland

Example of Landsystem Descriptions

Middleton	Ta	Low limestone plateau with open woodland
← Landsystem	← Map unit	← Landsystem description



GENERAL FEATURES Land unit boundary Limit of mapping Property boundary Park / Reserve Pastoral homestead Major community Outstation Roadhouse Highway Main road: unsealed Minor road: sealed Minor road: unsealed	GENERAL FEATURES Local road / track Landing ground Water bore Dam Water pipeline Fence Paddock name Drainage Lagoon / waterhole Relief feature Spot height	MAP LOCALITY MAP LOCALITY & INDEX TO 1:250 000 MAP SHEETS NAPPERBY SFS309 ALCOOTA SFS314 HERMANNSBURG SFS313 ALICE SPRINGS SFS314 Base Information Source NT Department of Lands, Planning & the Environment Geoscience Australia, Australian Government	
--	--	---	--