

LAND RESOURCES of NT PORTION 1918 JUNO BLOCK - TENNANT CREEK

For further information contact:
Manager, Land Assessment, Rangelands Division, Department of Land Resource Management
Ph. (08) 8999 4443 Email: rangelands@nt.gov.au Web: www.lrm.nt.gov.au
Level 3, Goyder Centre, 25 Chung Wah Terrace, Palmerston, Northern Territory of Australia.

LAND UNIT DESCRIPTIONS

LOW HILLS

5a Isolated low hills; very gravelly, rapidly drained, massive Rudosol soils overlying hard rock.

RISES

6a Hillslope rises on platy ironstone outcrop surface, local relief 6m, slope 5%; hummock grassland; shallow (0.25-0.50m), well drained, very-gravelly, strongly acidic, massive, brown Rudosol soils overlying siltstone and ironstone gravels.

LOW RISES

7a Gently undulating low rises, local relief 2m, slope 2%; hummock grassland; shallow (0.30m), well drained, gravelly (22-55%), massive, red earth Rudosol soils.

PLAINS

8a1 Level plains, local relief ~0.5m, slopes 0-0.5%; sparse Acacia and Eucalyptus shrubland; deep (0.8m) or very deep (>1.5m), well drained, non-gravelly, massive, red earth Kandosol soils.

8a2 Level plains, local relief ~0.5m, slopes 0-0.5%; open Acacia and Eucalyptus shrubland; deep (0.8m) or very deep (>1.5m), moderately well drained, non-gravelly, massive, red earth Kandosol soils.

8b Gently undulating plains, local relief ~1m, slopes 1%; hummock grassland with scattered shrubs; shallow (0.35m), moderately well drained, gravelly (0-40%), massive reddish-brown earth Kandosol soils.

Land resource information has been derived from aerial imagery interpretation and field data describing landform, soil and vegetation. Mapping has been collected according to the national standards and prepared at a scale of 1:20 000. Enlarging this map beyond this scale will not provide further detail. A site inspection should always accompany mapping for specific areas.



Black numbered lines are 2500 metre intervals of the Map Grid of Australia (MGA) Zone 53
Transverse Mercator Projection Horizontal Datum: GDA 94

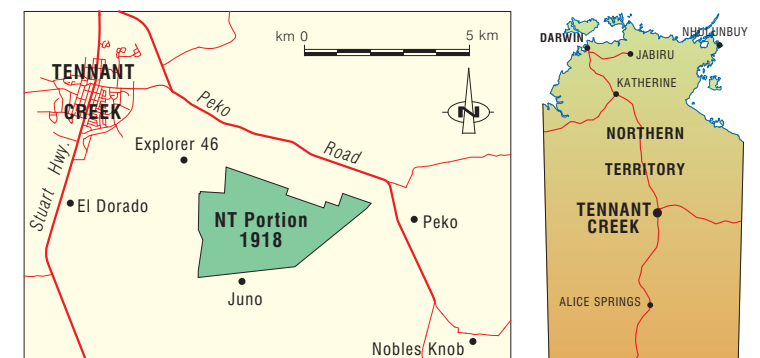
BIBLIOGRAPHIC REFERENCE:

Riddell, W. and Easey D. (2016) *LAND RESOURCES OF NT PORTION 1918, TENNANT CREEK*
DLRM Technical Report 3/2016D
Land Assessment, Rangelands Division,
Department of Land Resource Management, Palmerston, Northern Territory

TECHNICAL REFERENCES:

National Committee on Soil and Terrain (2009). *AUSTRALIAN SOIL AND LAND SURVEY FIELD HANDBOOK* (3rd edn). Canberra, Australian Collaborative Land Evaluation Program, CSIRO Publishing, Melbourne.
Isbell, RF (2002). *THE AUSTRALIAN SOIL CLASSIFICATION*. CSIRO Publishing, Melbourne.

MAP LOCALITY

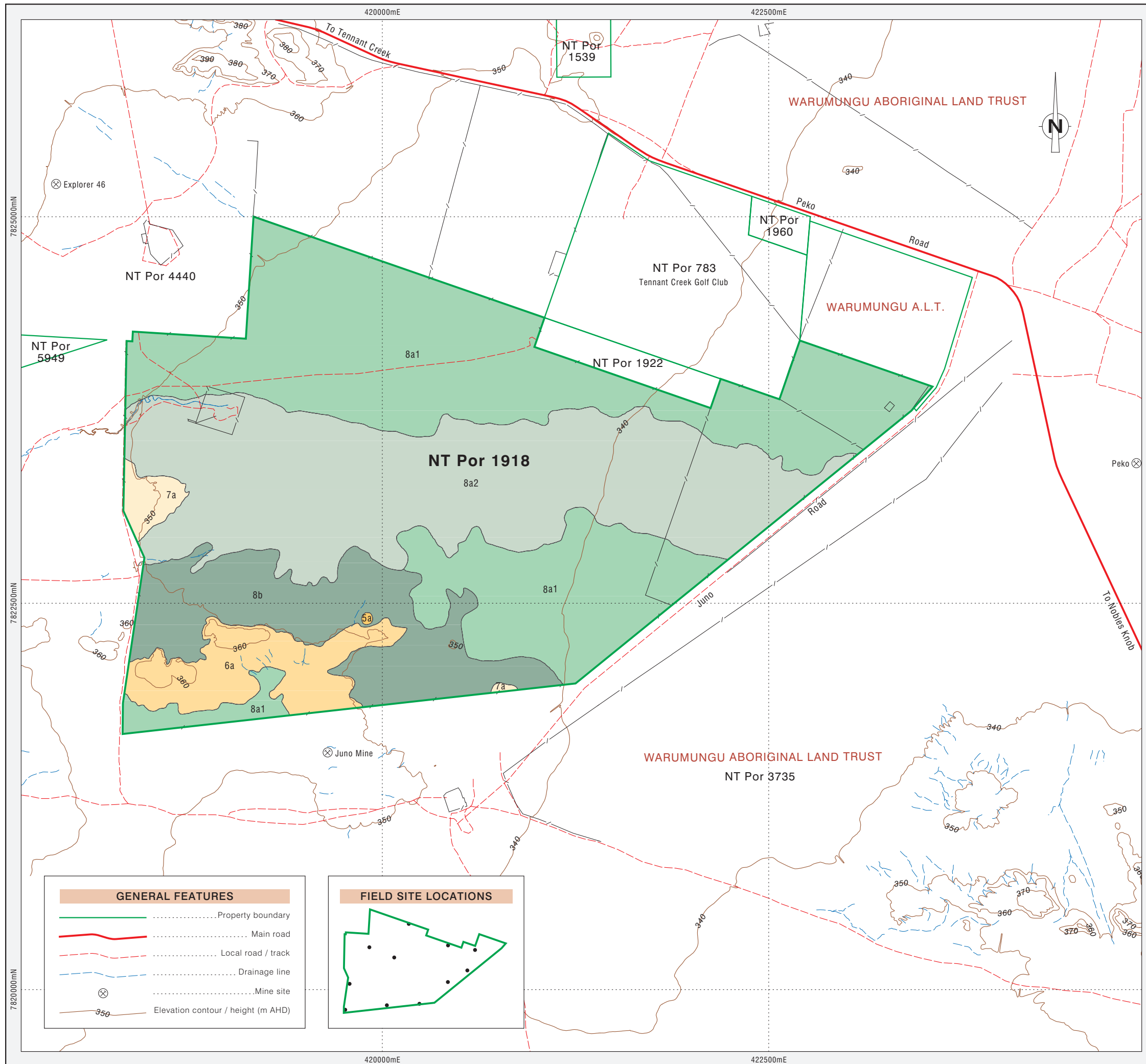


Cartography by L. Fritz, Spatial Data and Mapping, Water Resources,
Department of Land Resource Management, Northern Territory of Australia, February 2016
Web: www.lrm.nt.gov.au/nrmmapst Map Reference: NT-Por-1918_Land-Resources



© Northern Territory of Australia

The Northern Territory of Australia does not warrant that the product or any part of it is correct or complete and will not be liable for any loss damage or injury suffered by any person as a result of its inaccuracy or incompleteness.



GENERAL FEATURES

- Property boundary
- Main road
- Local road / track
- Drainage line
- Mine site
- Elevation contour / height (m AHD)

FIELD SITE LOCATIONS