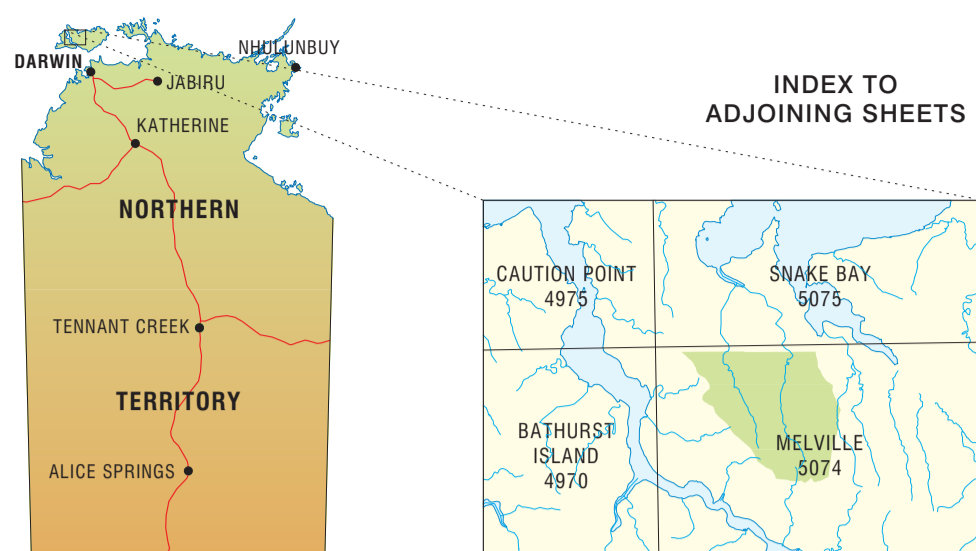


MAP LOCALITY & 1:100 000 MAP SHEET INDEX



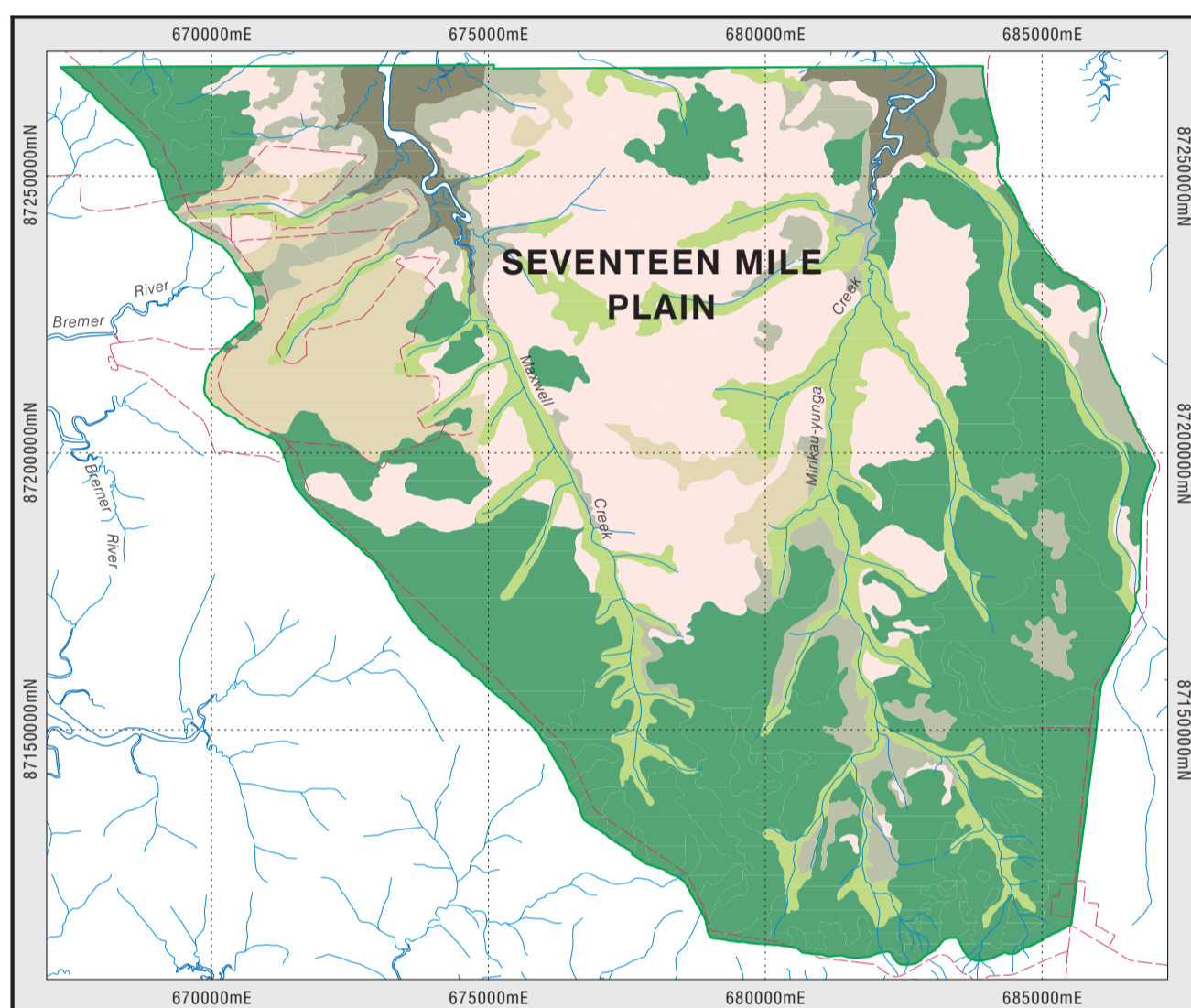
GENERAL FEATURES



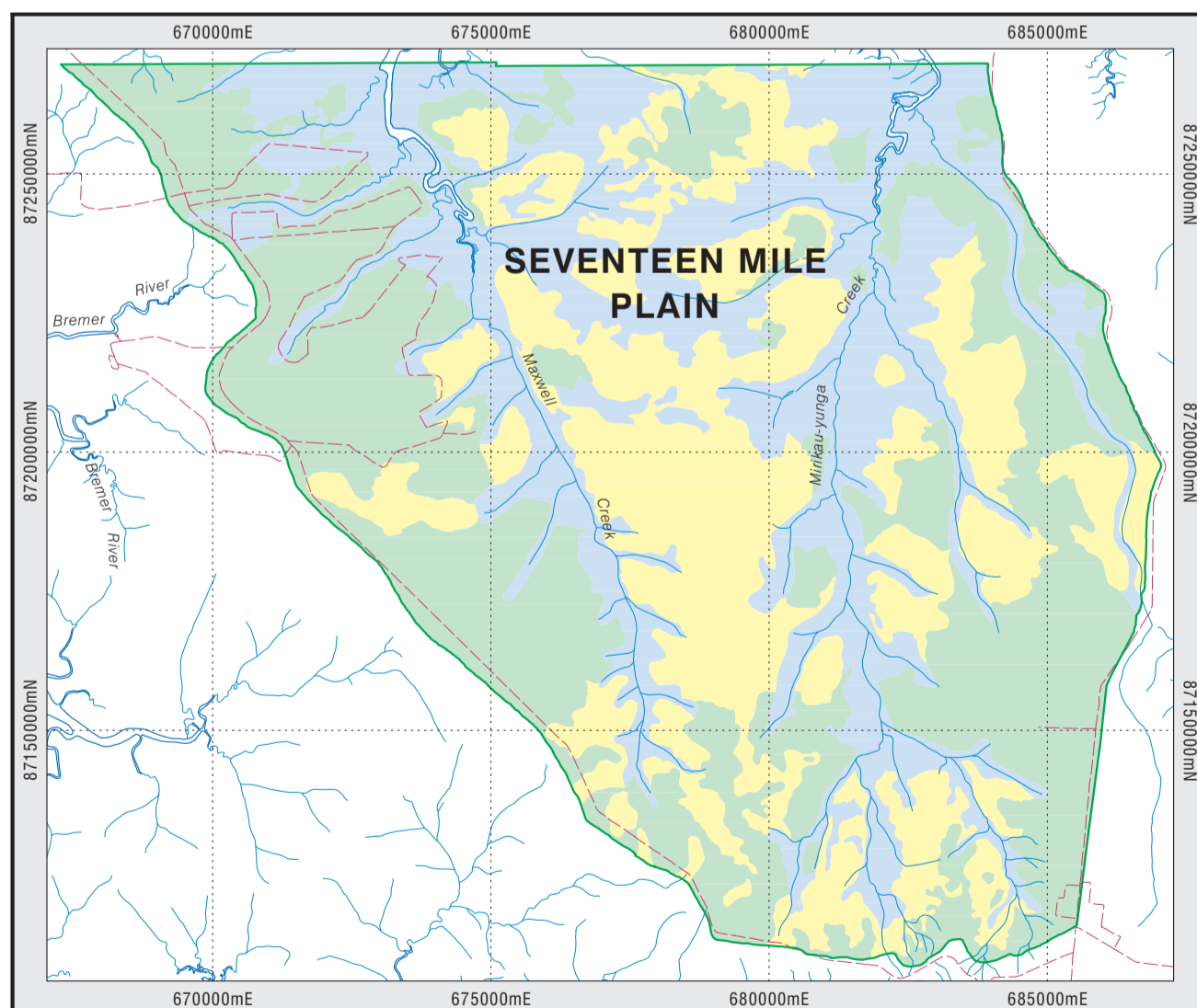
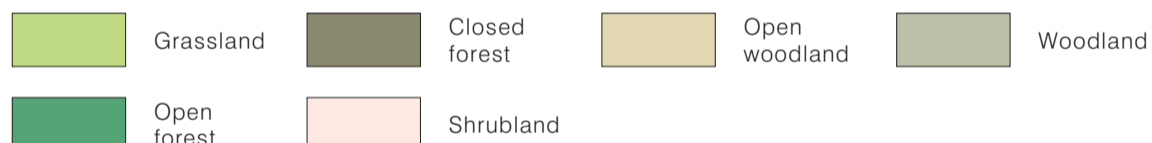
Base Information Data Sources: Northern Territory Department of Lands, Planning and Environment, Geoscience Australia, Australian Government.

Cartography by R. Lim, October 2013. Spatial Data and Mapping, Water Resources Division, Dept of Land Resource Management, Northern Territory of Australia. File Reference: Seventeen-Mile-Plain-Melville-Is_Land-Resources

Attribution-NonCommercial-ShareAlike. This publication is provided under a Creative Commons Attribution 3.0 Australia License. <http://creativecommons.org/licenses/by-nc-sa/3.0/au/>



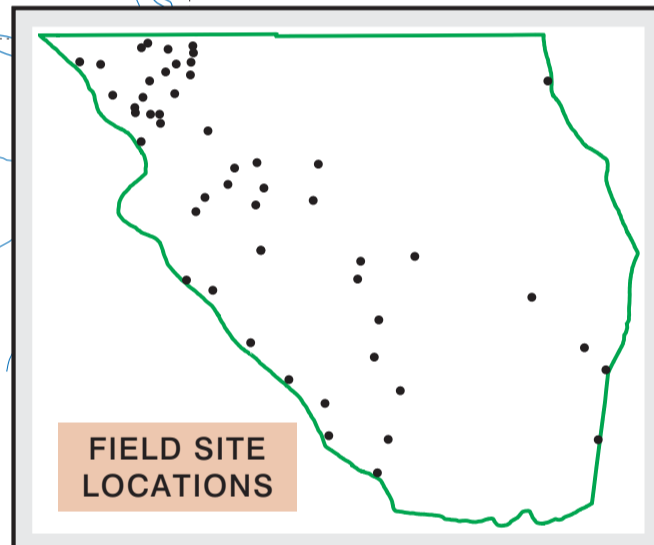
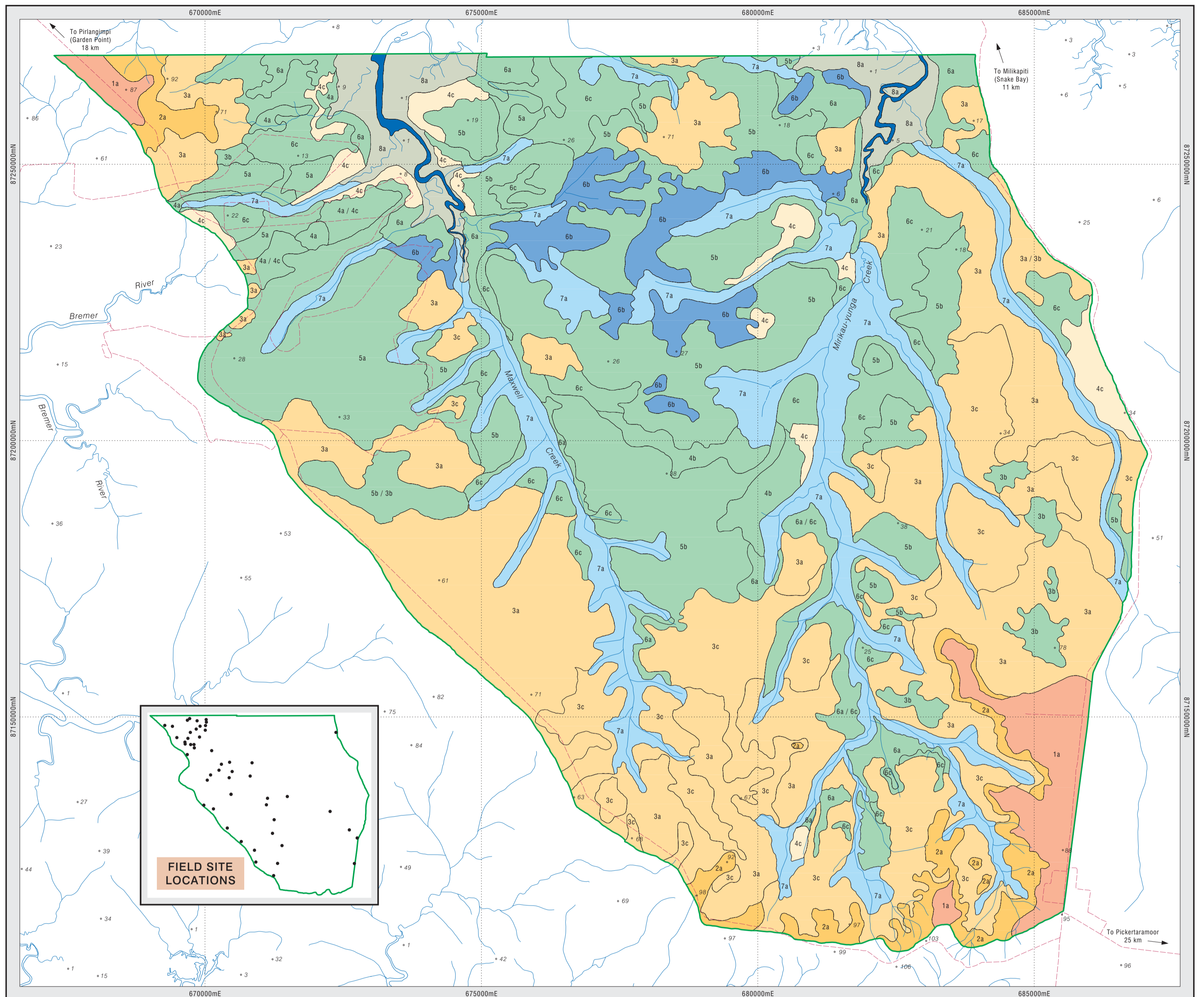
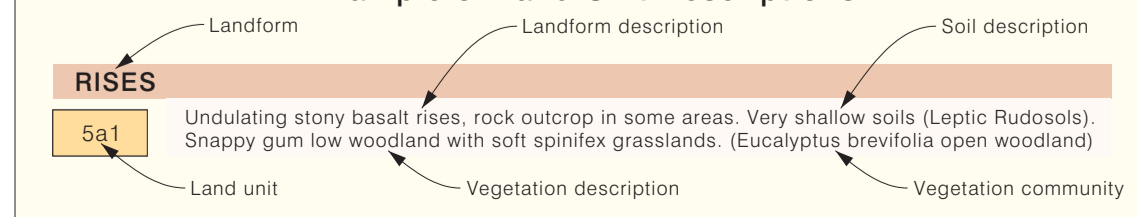
VEGETATION CLASSES



SOIL CLASSES



Example of Land Unit Descriptions



LAND UNIT DESCRIPTIONS

- PLATEAUX**
- 1a** Plateau surfaces, generally flat, may be slightly undulating Red earths (Red Kandosols); (Berriham series II), deep, occasional gravels and some lateritic outcrop. Eucalyptus miniata, Eucalyptus tetradonta and Eucalyptus nesophila Open forest.
- LOW HILLS**
- 2a** Slopes generally 10-15% with occasional cliffs, usually fairly rugged. Very shallow, red lithosols (Red Kandosols); (Irgul). Eucalyptus nesophila and Eucalyptus miniata Open forest.
- RISES**
- 3a** Long colluvial slopes below plateau surfaces, separated from plateau by scarps; slopes normally 1-3%, can be greater; some remnant areas occur in main body of plains isolated from parent scarp and plateau. Deep sandy red earths (Red Kandosols); (Killuppa series II); no gravel or laterite outcrop; Berriham series sometimes occur. Eucalyptus miniata and Eucalyptus nesophila Open forest.
 - 3a/3b** Long colluvial slopes below plateau surfaces, separated from plateau by scarps; slopes normally 1-3%, can be greater; some remnant areas occur in main body of plains isolated from parent scarp and plateau. Deep sandy red earths (Red Kandosols); (Killuppa series II); no gravel or laterite outcrop; Berriham series sometimes occur. Eucalyptus miniata and Eucalyptus nesophila Open forest.
 - 3c** Footslopes or lower slopes of rugged terrain or gently undulating timbered area. Deep earthy sands (Red-Orthic Tenosols); (Cockatoo series II). Eucalyptus nesophila or Eucalyptus miniata and Eucalyptus tetradonta Open forest.
- LOW RISES**
- 4c** Undulating terrain, slopes to 4%, low level in landscape as a whole. Lateritic yellow earths (Ferric Brown Kandosols); (Koolpinyah). Eucalyptus porrecta or Eucalyptus confertiflora Low woodland.

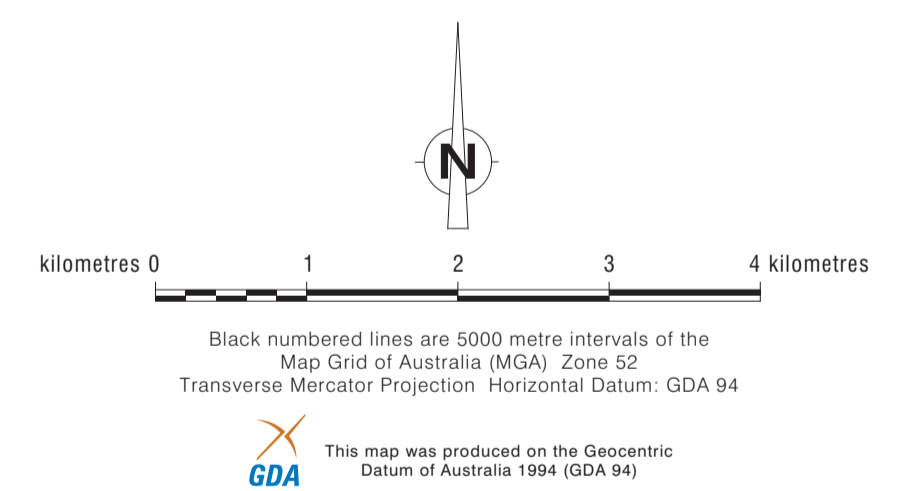
- PLAINS**
- 3b** Gently sloping undulating areas associated with units 1a, 2a and 3a. Gravely red earths (Red Kandosols); (Hotham); some laterite outcrop. Eucalyptus bleeseri Woodland.
 - 4a** Lower slopes up to 3%. Deep sandy yellow earths (Kandosolic Oxyaquic Hydrosols); (Rami series II). Banksia dentata and Acacia spp., Low woodland.
 - 4a/4c** Lower slopes up to 3%. Deep sandy yellow earths (Kandosolic Oxyaquic Hydrosols); (Rami series II). Banksia dentata and Acacia spp., Low woodland.
 - 4b** Gently undulating terrain, slopes up to 3%. Deep yellow earthy sands (Brown-Orthic Tenosols); (Arnhem). Banksia dentata and Livistona sp. Low open woodland.
 - 5a** Flat to gently undulating terrain; slopes to 2%. Deep sandy red earths (Red-Orthic Tenosols); (Killuppa) on colluvium. Banksia dentata, Petalostigma quadriloculare and Acacia spp. Low open woodland.
 - 5b** Undulating terrain; slopes up to 3%, can be 4%. Deep red earthy sands (Red-Orthic Tenosols); (Cockatoo series II). Acacia spp., Grevillea spp., and Calytrix exstipulata Tall to Low shrubland.

LAND UNIT DESCRIPTIONS (continued)

- PLAINS**
- 5b/3b** Undulating terrain; slopes up to 3%, can be 4%. Deep red earthy sands (Red-Orthic Tenosols); (Cockatoo series II). Acacia spp., Grevillea spp., and Calytrix exstipulata Tall to Low shrubland. 3b component present.
 - 6a** Low lying areas in landscape, slope 1%. Lateritic podzolics (Kandosolic and Chromosolic Redoxic Hydrosols); (Mirriku series I & II) - high amounts of gravel in lower A and upper B horizons. Melaleuca viridiflora Low woodland.
 - 6a/6c** Low lying areas in landscape, slope 1%. Lateritic podzolics (Kandosolic and Chromosolic Redoxic Hydrosols); (Mirriku series I & II) - high amounts of gravel in lower A and upper B horizons. Melaleuca viridiflora Low woodland. 6c component present.
 - 6c** Low lying areas, generally flat; slope 1%. Lateritic podzolics (Kandosolic and Chromosolic Redoxic Hydrosols); (Mirriku series I & II) - high amounts of gravel in lower A and upper B horizons. Banksia dentata and Grevillea pteridifolia Tall open shrubland.
- DRAINAGE SYSTEMS**
- 7a** Springs, creeks and drainage flats. Humic gleys (Kandosolic and Chromosolic Redoxic Hydrosols); (Murrabibi) and gleyed podzolics (Marraka) - soft weak subsoil. Sorghum plumosum, Eriachne sp., and Mnesithea sp., Grassland.
- SWAMPS**
- 6b** Flat seasonally ponded areas. Lateritic podzolics (Kandosolic Redoxic Hydrosols); (Mirriku series I) - high amounts of gravel in the lower A and upper B horizons. Grevillea pteridifolia or Grevillea pteridifolia and Lophostemon lactifluus Tall open shrubland.
- MARINE**
- 8a** Saltwater mangroves areas along coast and lower tidal portions of rivers and creeks. Unconsolidated saline mud. Mangrove spp. Low closed forest.

BIBLIOGRAPHIC REFERENCE:

- Van Cuylenburg, H.R. and Dunlop, C. (1973) *Land Units of The Seventeen Mile Plain, Melville Island* (1973). Report number TB - 73/14. Animal Industry and Agriculture Branch, Department of the Northern Territory.
- Northcote K.H. (1971). *A Factual Key for the Recognition of Australian Soils*, 3rd edition. Rellim Publications, Glenside, SA.
- Stace H.C.T., Hubble G.D., Brewer R., Nortcote K.H., Sleeman J.R., Mulcahy M.J. and Hallsworth E.G. (1968). *A Handbook of Australian Soils*. Rellim Technical Publications, Glenside, SA.
- Isbell R.F. (2002) *The Australian Soil Classification* Revised Edition. Melbourne, CSIRO Publishing.
- National Committee on Soil and Terrain (2009) *Australian Soil and Land Survey Field Handbook* 3rd Edition. Melbourne, CSIRO Publishing.



Land resource information has been derived from aerial photograph interpretation and field collection of data describing landform, soil and vegetation. Mapping has been completed according to the national standards and prepared at a scale of 1 : 50 000. Enlarging this map beyond this scale will not provide further detail.

A site inspection should always accompany mapping for specific areas.

© Northern Territory of Australia

This product and all material forming part of it is copyright belonging to the Northern Territory of Australia. You may use this material for your personal, non-commercial use or use it within your organisation for non-commercial purposes, provided that an appropriate acknowledgement is made and the material is not altered in any way. Subject to the fair dealing provisions of the Copyright Act 1968, you must not make any other use of this product (including copying or reproducing it or part of it in any way) unless you have the written permission of the Northern Territory of Australia to do so.

The Northern Territory of Australia does not warrant that the product or any part of it is correct or complete and will not be liable for any loss damage or injury suffered by any person as a result of its inaccuracy or incompleteness.

For further information contact: Manager, Land Assessment, Rangelands Division, Department of Land Resource Management Ph. (08) 8999 3606, Fax. (08) 8999 3666 Goyder Centre, Chung Wah Terrace, Palmerston, Northern Territory of Australia.



LAND RESOURCES OF THE SEVENTEEN MILE PLAIN MELVILLE ISLAND