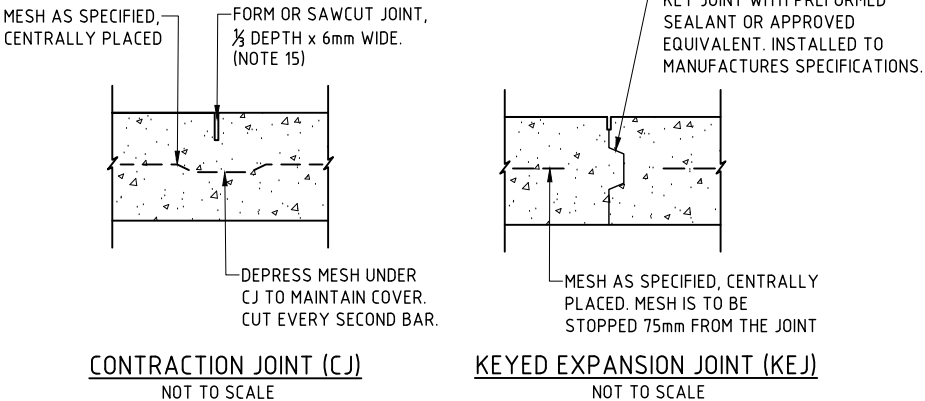


LAND USE ZONE	THICKNESS	REINFORCING
RESIDENTIAL	100mm	SL72
NON-RESIDENTIAL	150mm	SL92



1. ALL WORK MUST COMPLY WITH THE STANDARD SPECIFICATION FOR SUBDIVISIONS ALONG WITH PROJECT SPECIFIC AMENDMENTS.

2. CONCRETE TO BE MOIST CURED FOR AT LEAST 48 HOURS AFTER CONCRETE POUR.

3. CONCRETE TO BE MINIMUM N32/20/80 UNO. CONCRETE DESIGN IS TYPICALLY BASED ON B1 EXPOSURE CLASSIFICATION, WITH MINIMUM REQUIRED COVER TO REINFORCEMENT OF 40mm IN ACCORDANCE WITH AS3600.

FOR OTHER EXPOSURE CLASSIFICATIONS, COMPLY WITH AS3600 AND THE FOLLOWING MINIMUM STRENGTH AND COVER REQUIREMENTS:

EXPOSURE CLASSIFICATION	CHARACTERISTIC STRENGTH (MPa)	REQUIRED COVER (mm)
A1, A2	N25/20/80	30mm
B1	N32/20/80	40mm
B2	N40/20/80	45mm
C1	N50/20/80	50mm
C2	N50/20/80	65mm

TABLE NOTE: EXPOSURE CLASSIFICATIONS B2, C1 AND C2 MAY TRIGGER INCREASED CONCRETE THICKNESSES TO ACHIEVE MINIMUM COVER REQUIREMENTS.

4. MOISTEN BASECOURSE PRIOR TO CASTING CONCRETE.

5. CONSTRUCTION JOINTS ARE REQUIRED FOR PLANNED INTERRUPTIONS. ROUGHEN AND CLEAN FACE OF HARD CONCRETE, REMOVE FOREIGN MATERIAL.

6. THE CONCRETE PATH MUST BE STEEL TROWELLED FOLLOWED BY A MOIST HAIR BROOM. THE FINAL SURFACE MUST BE NON-SLIP WITH A MINIMUM TEXTURED SURFACE OF 2mm.

7. CONCRETE WORKS MUST COMPLY WITH AS3600 AND AS1379

8. MATCH NEW DRIVEWAYS TO EXISTING FOOTPATH AND VICE-VERSA. REFER SS1009 FOR FOOTPATH DETAILS.

9. THE FULL WIDTH OF THE FOOTPATH THAT TRAVERSES A VEHICULAR CROSSING SHALL HAVE A CROSSFALL OF 1% - 2% TOWARDS THE ROADWAY.

10. LIAISE WITH APPROPRIATE AUTHORITY FOR ADJUSTMENT OF EXISTING STRUCTURES WHERE NECESSARY. PITS MUST NOT BE LOCATED WITHIN DRIVEWAYS.

11. THE DRIVEWAY MUST MEET SIGHT DISTANCE CRITERIA FOR BOTH ENTRY AND EXIT IN ACCORDANCE WITH AS2890.1.

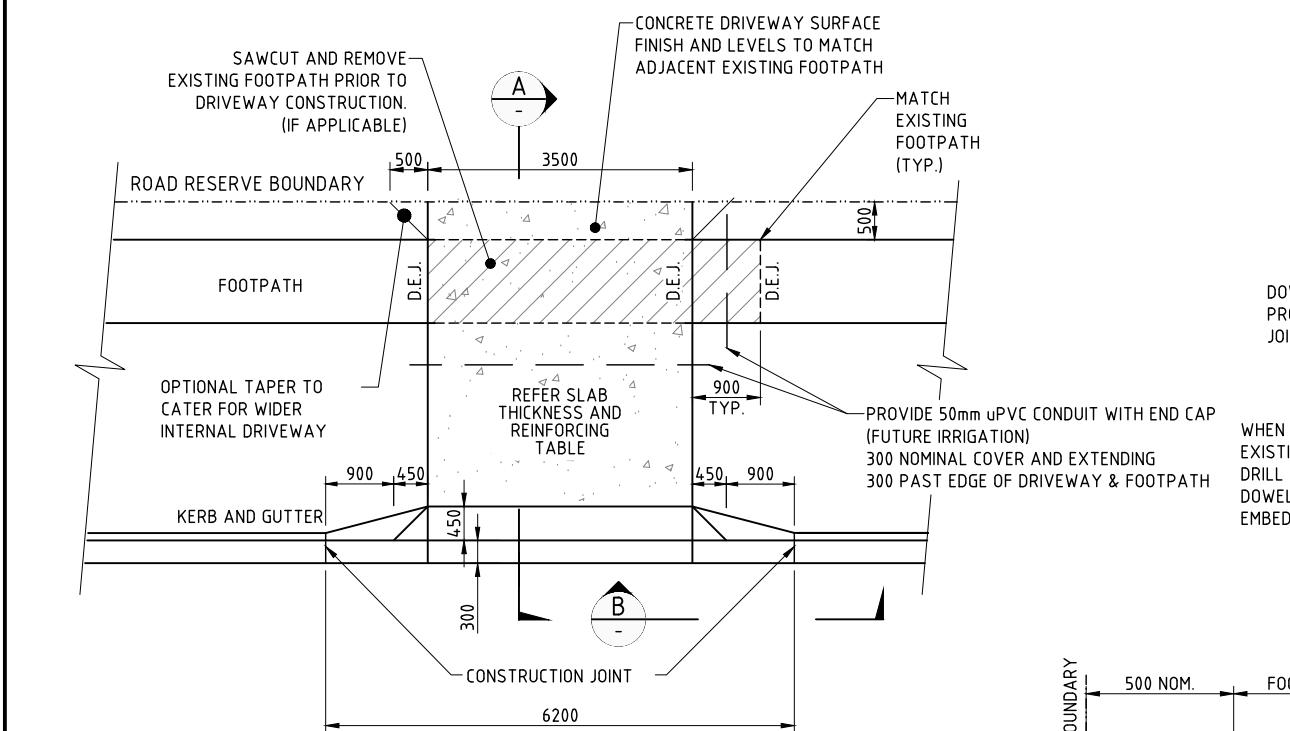
12. DRIVEWAYS MUST BE LOCATED WITH THE FOLLOWING MINIMUM SETBACKS/CLEARANCES AND PROVIDE ADEQUATE SIGHT DISTANCES IN ACCORDANCE WITH AUSTRROADS GUIDELINES:

- a. 500mm FROM STREET SIGNS
- b. 600mm FROM ANY STORMWATER DRAINAGE PIT
- c. 1000mm FROM OVERHEAD POWER/STREET LIGHT POLES
- d. 1200mm CLEAR OF SERVICE PITS, PILLARS, VALVE BOXES ETC.
- e. 6m FROM THE TANGENT POINT OF ANY INTERSECTIONS.

13. TRANSITION NOT REQUIRED WHERE DRIVEWAY INSTALLED AGAINST LAYBACK KERB.

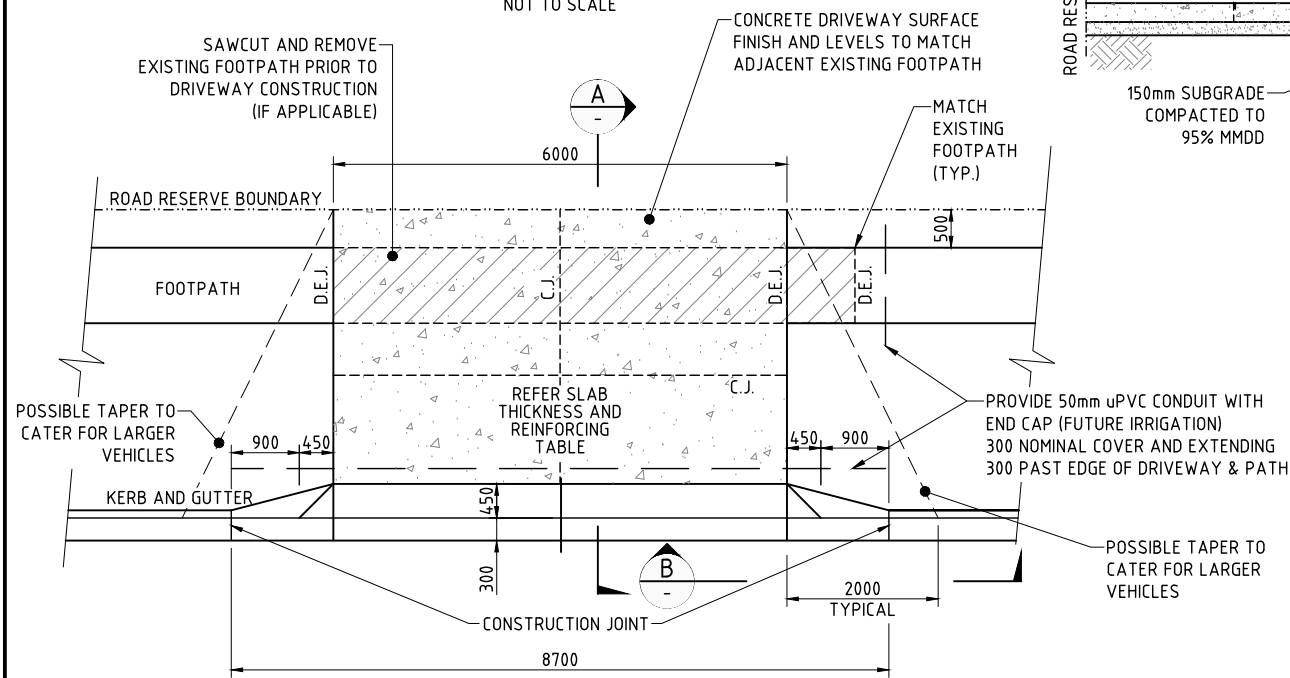
14. ENSURE GROUND CLEARANCE CHECKS ARE COMPLETED IN ACCORDANCE WITH AS2890 TO CONFIRM ACCESS IS COMPLIANT FOR REQUIRED DESIGN VEHICLES.

15. SAWCUT JOINTS SHOULD BE UNDERTAKEN BETWEEN 4 HOURS TO 12 HOURS AFTER LAYING CONCRETE, DEPENDING ON CONDITIONS. JOINT SEALANT IS REQUIRED IN SANDY AREAS.



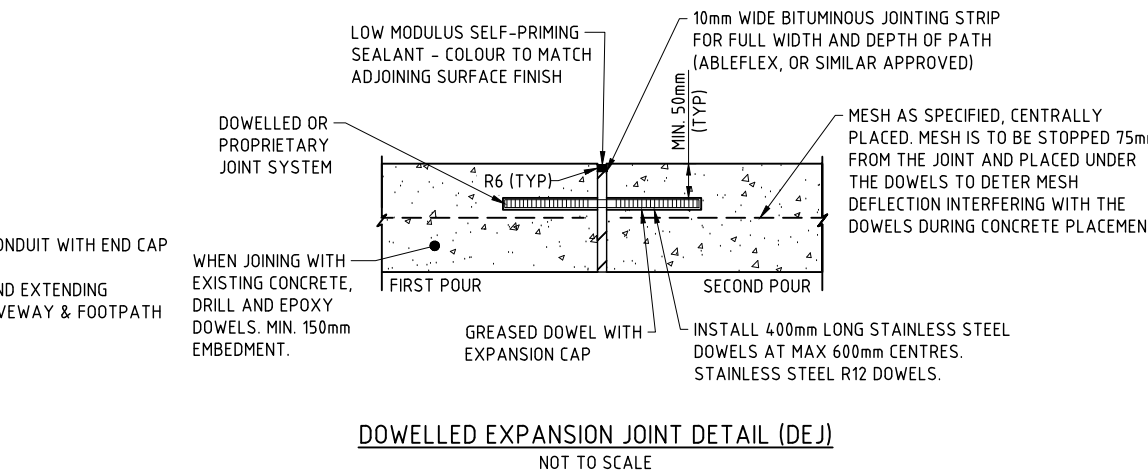
NOT TO SCALE

NOT TO SCALE



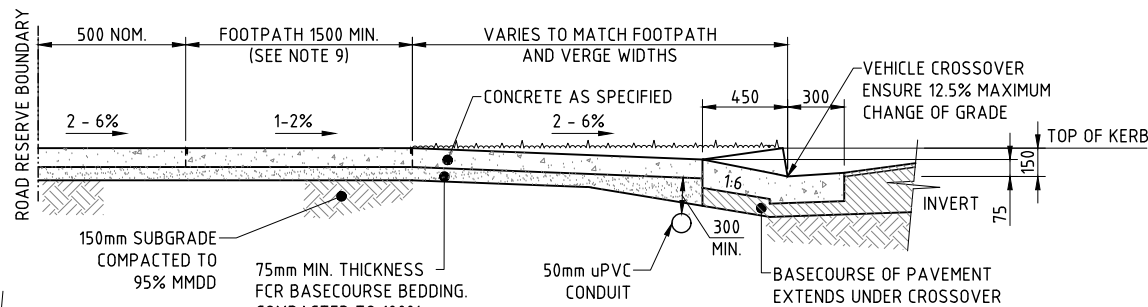
NOT TO SCALE

NOT TO SCALE



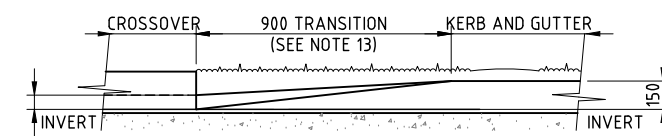
NOT TO SCALE

NOT TO SCALE



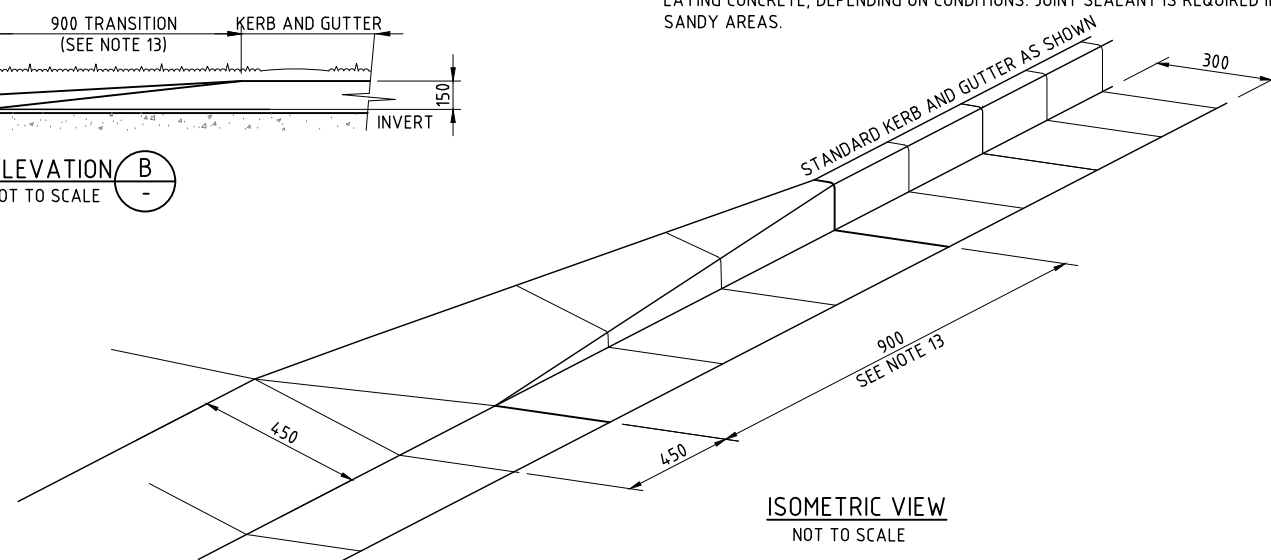
NOT TO SCALE -

NOT TO SCALE



NOT TO SCALE

NOT TO SCALE



NOT TO SCALE

NOT TO SCALE

1	REISSUED AS A STANDARD DRAWING	APR 23	KS	BYRNE
0	ISSUED AS A STANDARD DRAWING	AUG 20	KS	BYRNE
No.	AMENDMENT DESCRIPTION	DATE	INIT.	DEPT/COMPANY

Drawn	Checked
KS	PB
Date: AUGUST 2020	Date: AUGUST 2020
Designed	Checked
PB	SPB
Date: AUGUST 2020	Date: AUGUST 2020
Design Project Leader	NTG Project Manager
SPB	N/A
Date: AUGUST 2020	Date: AUGUST 2020



SUBDIVISION DEVELOPMENT GUIDELINES STANDARD DRAWINGS

STREETS AND PATHWAYS

VEHICLE ACCESS - CAT A

TYPICAL DETAILS

NTG Project No.	NTG Asset No.	Sheet Reference	NTG Drawing No.	Amendment	Approval
-	-	1 OF 1	SS1006	1	A