

LEGEND:

- 10mm SINGLE COAT SPRAY SEAL (S10E) SHOULDER.
- 3% CEMENT (BY MASS) STABILIZED FILL, 150mm THICKNESS.
- CONCRETE FOOTPATH (REFER SS1009)
- VEHICLE ACCESS TO BE EITHER CONCRETE OR SEALED AS PER TABLE 1.
- CONCRETE INVERT. REFER DETAIL.

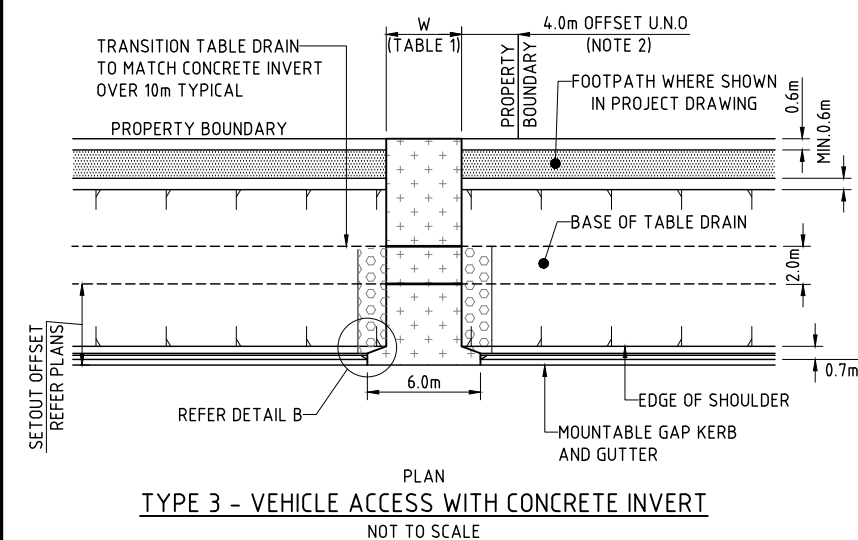
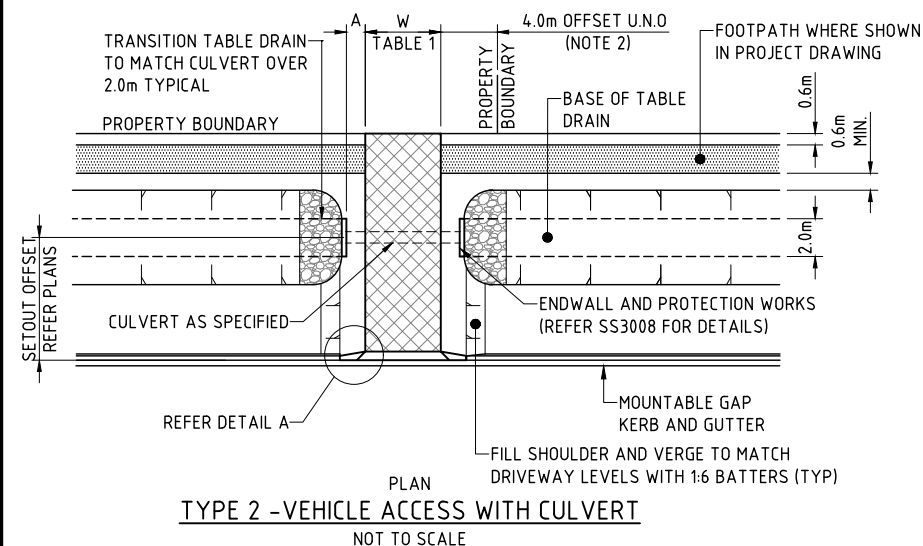
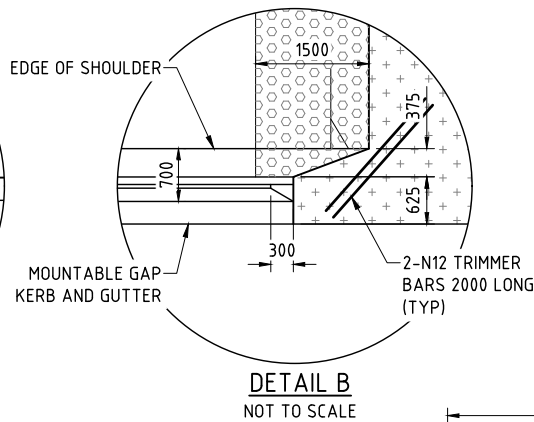
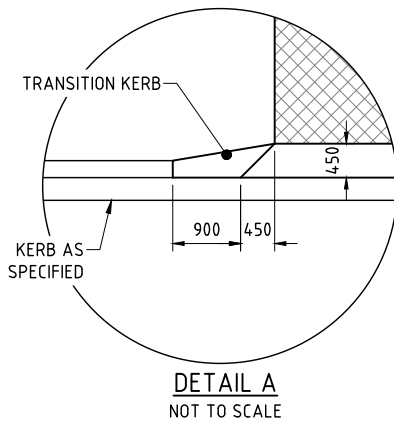
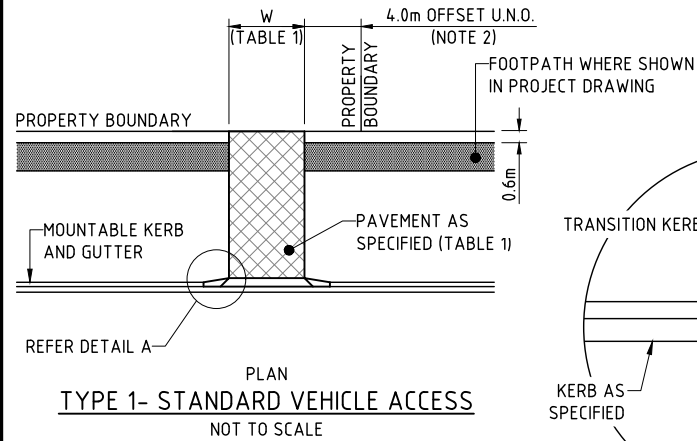


TABLE 1 - ACCESS PAVEMENT DETAIL				
ACCESS TYPE	W (m)	A (m)	CULVERT CONFIGURATION	PAVEMENT
RESIDENTIAL (SINGLE)	4.0m	0.240m	2x FULL LENGTH	PRIME AND 14mm SINGLE COAT SEAL (S10E) 150mm THICK COMPACTED GRAVEL ON 150mm THICK COMPACTED SUBGRADE MIN CBR 15
RESIDENTIAL (MULTI-DWELLING)	6.0m	0.472m	3x FULL LENGTH	
RESIDENTIAL (DUAL)	8.0m	0.705m	4x FULL LENGTH	
		0.082m	3x FULL LENGTH AND 1x HALF LENGTH CULVERT	
NON-RESIDENTIAL (SINGLE)	6.0m	0.472 m	3x FULL LENGTH	PROVIDE 150mm N32 CONCRETE SL92 MESH CENTRAL, WITH EDGE THICKENING ALL-ROUND ON 75 MIN BASECOURSE BEDDING COMPACTED TO 100% MMDD, ON 150mm SUBGRADE COMPACTED TO 95% MMDD
NON-RESIDENTIAL (DUAL)	12.0m	1.17m	6x FULL LENGTH	
		0.547m	5 FULL LENGTH AND 1x HALF LENGTH CULVERT	

NOTES:

- ALL WORK MUST COMPLY WITH THE STANDARD SPECIFICATION FOR SUBDIVISIONS ALONG WITH PROJECT SPECIFIC AMENDMENTS.
- DETAIL SHOWN FOR SINGLE VEHICLE ACCESS. DUAL ACCESS SHALL BE CONSTRUCTED EQUAL ABOUT PROPERTY BOUNDARY. 4m OFFSET SHOWN IS TYPICAL U.N.O. REFER PROJECT DRAWINGS FOR ALTERNATIVE SET OUT DETAILS AS APPLICABLE
- ESTABLISH INVERT ON A COMPACTED SUBGRADE AND MATCH TO TABLE DRAIN INVERT LEVELS AND GRADES (MIN. 0.5%)
- UPSTREAM AND DOWNSTREAM PROTECTION WORKS MAY BE REQUIRED - EACH SITE SHALL BE INDIVIDUALLY ASSESSED.
- WHERE SPRAY SEAL SURFACE ABUTS CONCRETE DRIVEWAY, PROVIDE 100mm SPRAY SEAL OVERLAP OF CONCRETE DRIVEWAY.
- WHERE CONCRETE FOOTPATH ABUTS CONCRETE DRIVEWAY, PROVIDE DOWELLED EXPANSION JOINT AS PER SS1006.
- IN THE EVENT THE ACCESS IS LOCATED OFF AN EXISTING SEALED ROAD THEN:
 - PROVIDE A SAWCUT INTO SOUND UNCONTAMINATED PAVEMENT MATERIAL.
 - LAP TOPMOST COAT OF SEAL 100mm OVER SAWCUT.
 - ENSURE THE JOINT IS A SMOOTH TRANSITION OVER THE EXISTING SEAL WITHOUT FORMING INVERTS OR CRESTS.
- DRIVEWAYS MUST MEET SIGHT DISTANCE CRITERIA FOR BOTH ENTRY AND EXIT IN ACCORDANCE WITH AS2890.1 AND BE LOCATED WITH THE FOLLOWING MINIMUM SETBACKS/CLEARANCES AND PROVIDE ADEQUATE SIGHT DISTANCES IN ACCORDANCE WITH AUSTRROADS GUIDELINES:
 - 500mm FROM STREET SIGNS
 - 600mm FROM ANY STORMWATER DRAINAGE PIT
 - 1000mm FROM OVERHEAD POWER/STREET LIGHT POLES
 - 1200mm CLEAR OF SERVICE PITS, PILLARS, VALVE BOXES ETC.
 - 6m FROM THE TANGENT POINT OF ANY INTERSECTIONS.

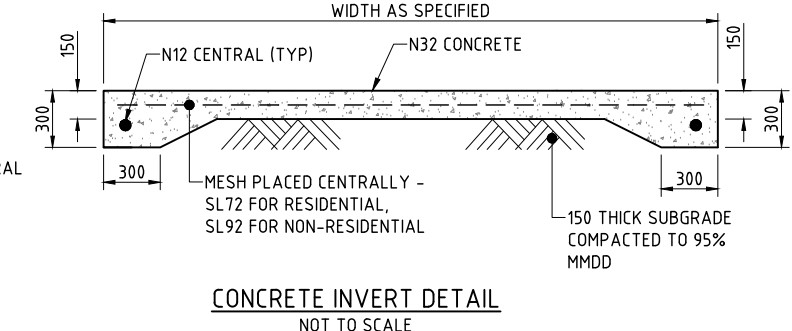
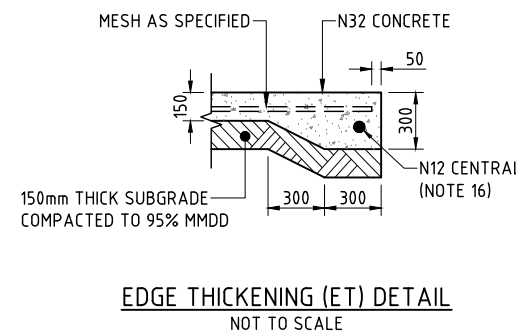
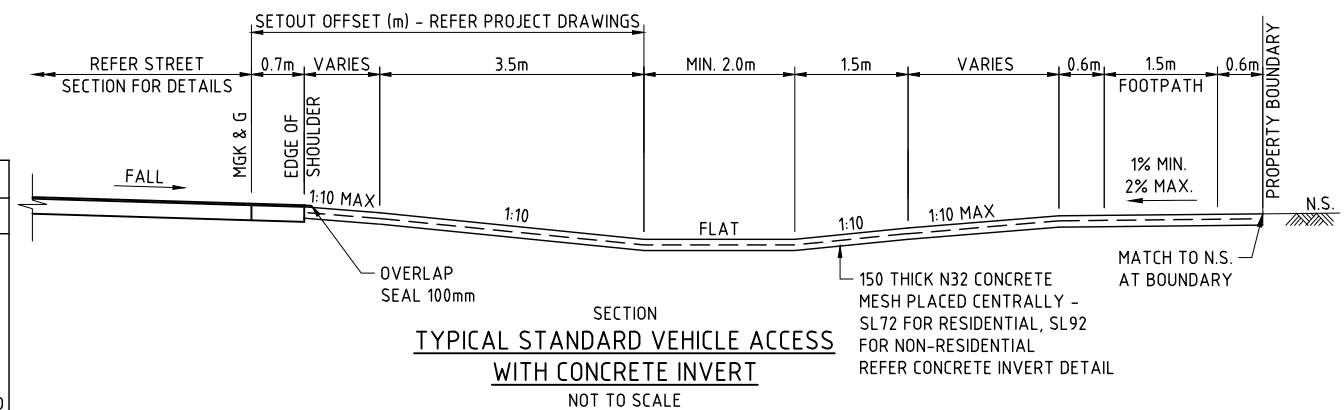
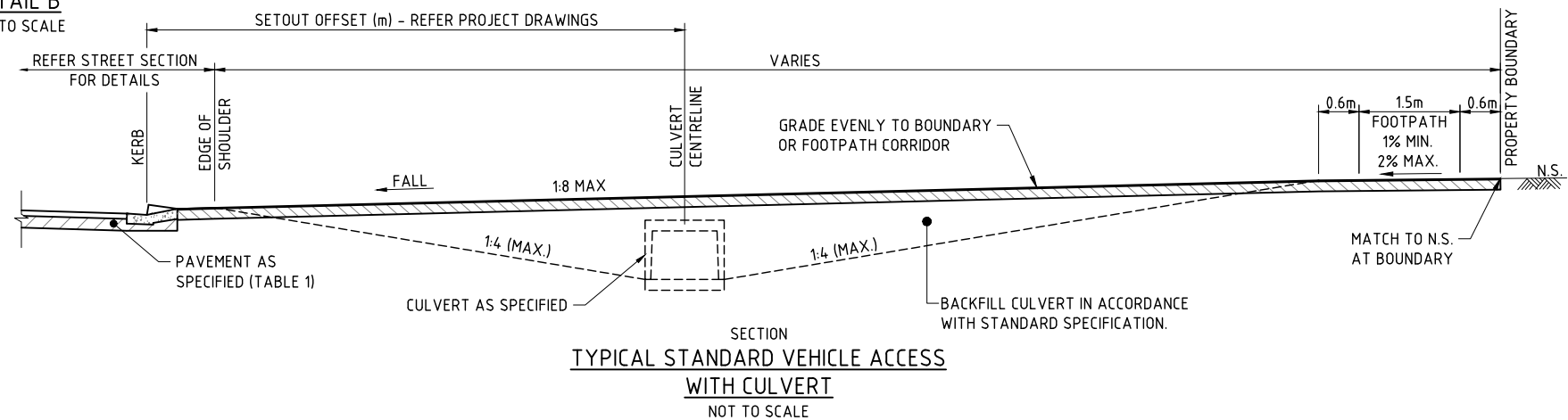
- CONCRETE WORKS MUST GENERALLY COMPLY WITH AS3600 AND AS1379.
- CONCRETE TO BE MINIMUM N32/20/80 UNO. CONCRETE DESIGN IS TYPICALLY BASED ON B1 EXPOSURE CLASSIFICATION, WITH MINIMUM REQUIRED COVER TO REINFORCEMENT OF 40mm IN ACCORDANCE WITH AS3600.

FOR OTHER EXPOSURE CLASSIFICATIONS, COMPLY WITH AS3600 AND THE FOLLOWING MINIMUM STRENGTH AND COVER REQUIREMENTS:

EXPOSURE CLASSIFICATION	CHARACTERISTIC STRENGTH (MPa)	REQUIRED COVER (mm)
A1, A2	N25/20/80	30mm
B1	N32/20/80	40mm
B2	N40/20/80	45mm
C1	N50/20/80	50mm
C2	N50/20/80	65mm

TABLE NOTE: EXPOSURE CLASSIFICATIONS B2, C1 AND C2 MAY TRIGGER INCREASED CONCRETE THICKNESSES TO ACHIEVE MINIMUM COVER REQUIREMENTS.

- PROVIDE CONTRACTION JOINTS AT MAX 5m CENTRES AND ANY CHANGES IN SHAPE AND DIRECTION. PROVIDE DOWELED EXPANSION JOINTS AT MAX 15m CENTRES. EACH CONCRETE PANEL MUST HAVE A MAXIMUM WIDTH TO LENGTH RATIO OF 1:1.5. REFER SS1006 FOR JOINT DETAILS.
- CONSTRUCTION JOINTS ARE REQUIRED FOR PLANNED INTERRUPTIONS. ROUGHEN AND CLEAN FACE OF HARD CONCRETE, REMOVE FOREIGN MATERIAL.
- MOISTEN BASECOURSE/SUBGRADE PRIOR TO CASTING CONCRETE.
- THE CONCRETE MUST BE STEEL TROWELLED FOLLOWED BY A MOIST HAIR BROOM. THE FINAL SURFACE MUST BE NON-SLIP WITH A MINIMUM TEXTURED SURFACE OF 2mm.
- CONCRETE TO BE MOIST CURED FOR A LEAST 48 HOURS AFTER CONCRETE POUR.
- BENT MESH MAY BE USED IN LIEU OF N12 BAR WITHIN EDGE THICKENINGS.
- ENSURE GROUND CLEARANCE CHECKS ARE COMPLETED IN ACCORDANCE WITH AS2890 TO CONFIRM ACCESS IS COMPLIANT FOR REQUIRED DESIGN VEHICLES.



No.	AMENDMENT DESCRIPTION	DATE	INIT.	DEPT/COMPANY
1	REISSUED AS A STANDARD DRAWING	APR 23	KS	BYRNE
0	ISSUED AS A STANDARD DRAWING	AUG 20	KS	BYRNE

Drawn KS Date: AUGUST 2020	Checked PB Date: AUGUST 2020
Designed PB Date: AUGUST 2020	Checked SPB Date: AUGUST 2020
Design Project Leader SPB Date: AUGUST 2020	NTG Project Manager N/A Date: AUGUST 2020



SUBDIVISION DEVELOPMENT GUIDELINES STANDARD DRAWINGS				
STREETS AND PATHWAYS				
VEHICLE ACCESS - CAT B				
TYPICAL DETAILS				
NTG Project No.	NTG Asset No.	Sheet Reference	NTG Drawing No.	Amendment
-	-	1 OF 1	SS1007	1