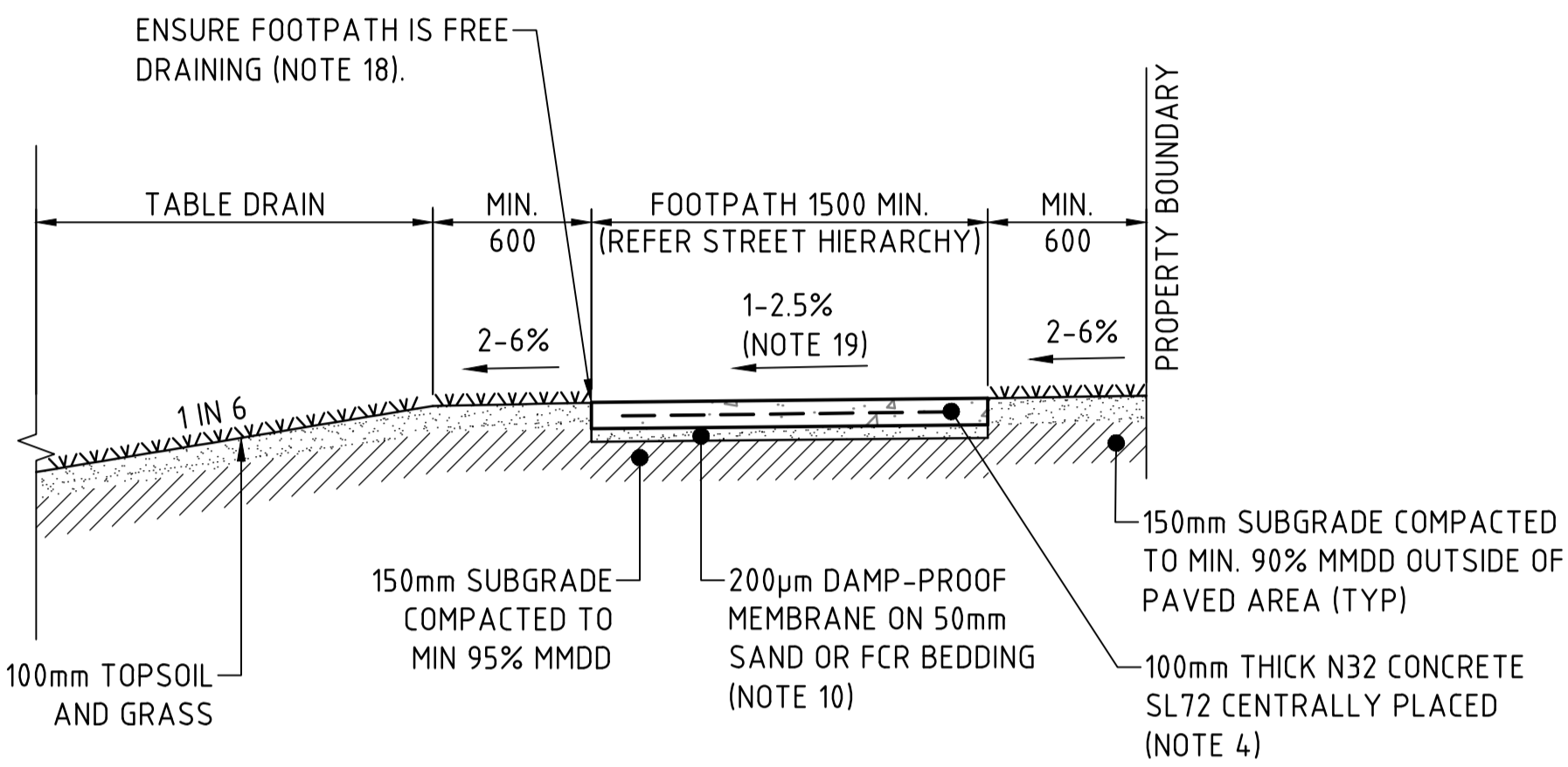
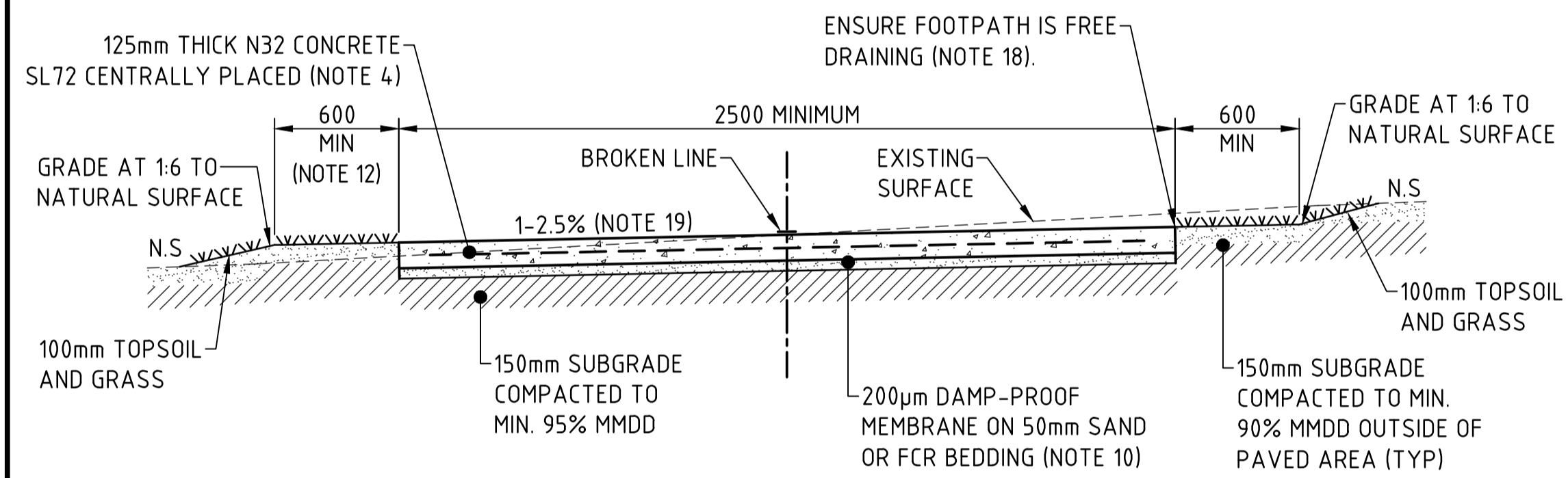


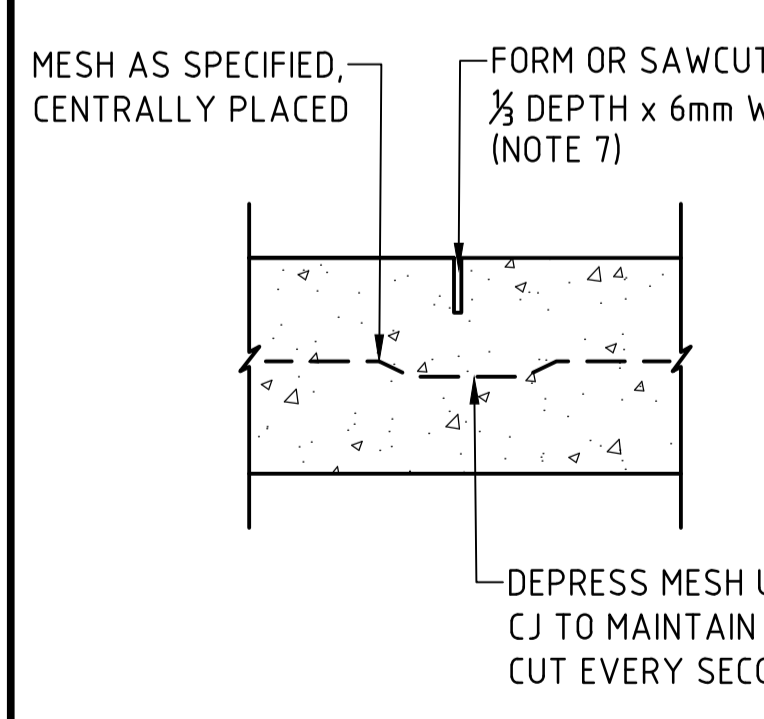
TYPICAL FOOTPATH SECTION - BEHIND KERB (NOTE 11)
NOT TO SCALE



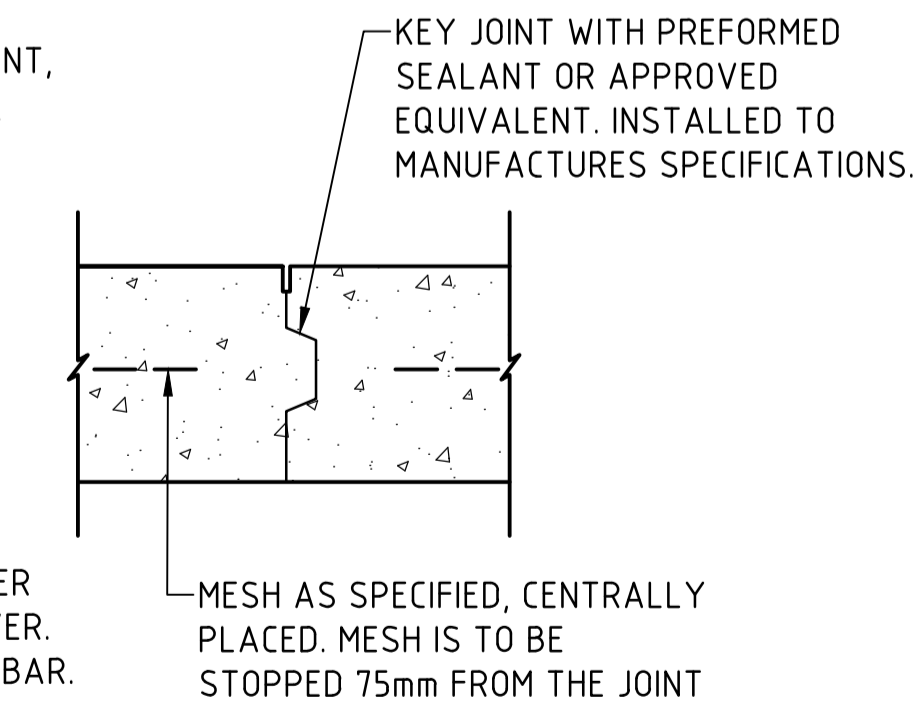
TYPICAL FOOTPATH SECTION - BEHIND TABLE DRAIN (NOTE 11)
NOT TO SCALE



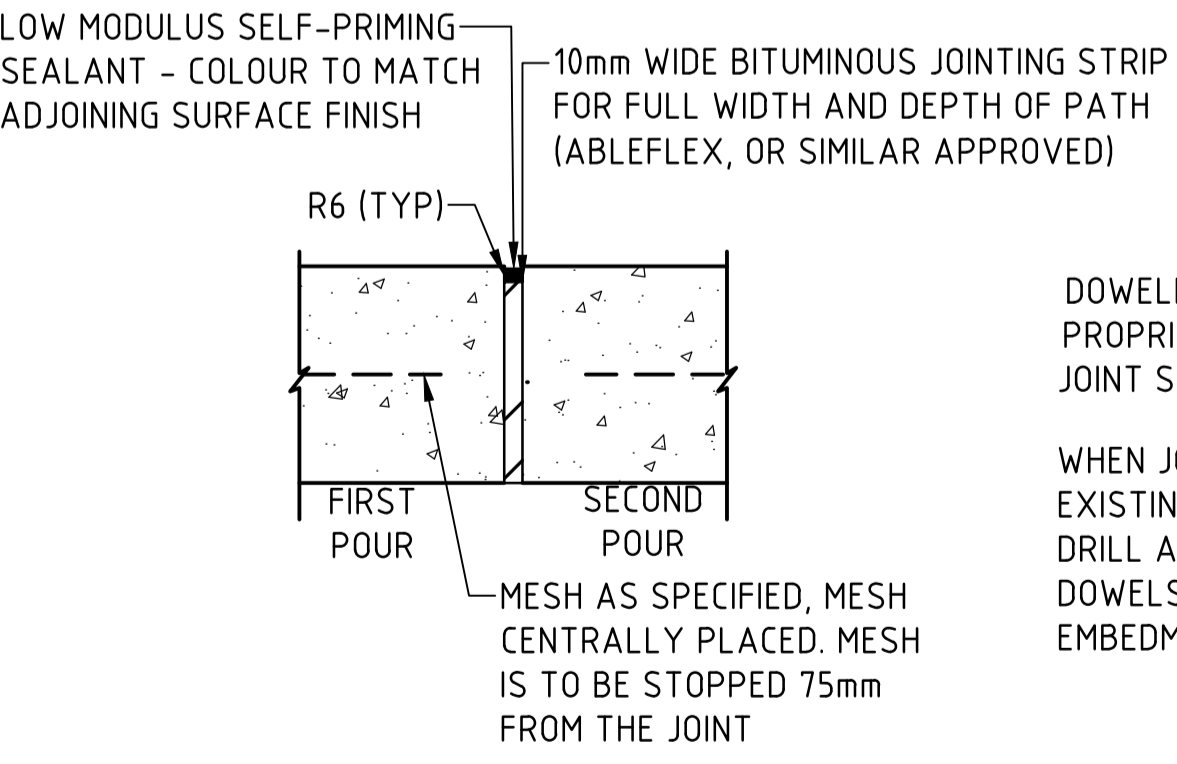
TYPICAL SHARED PATH SECTION
NOT TO SCALE



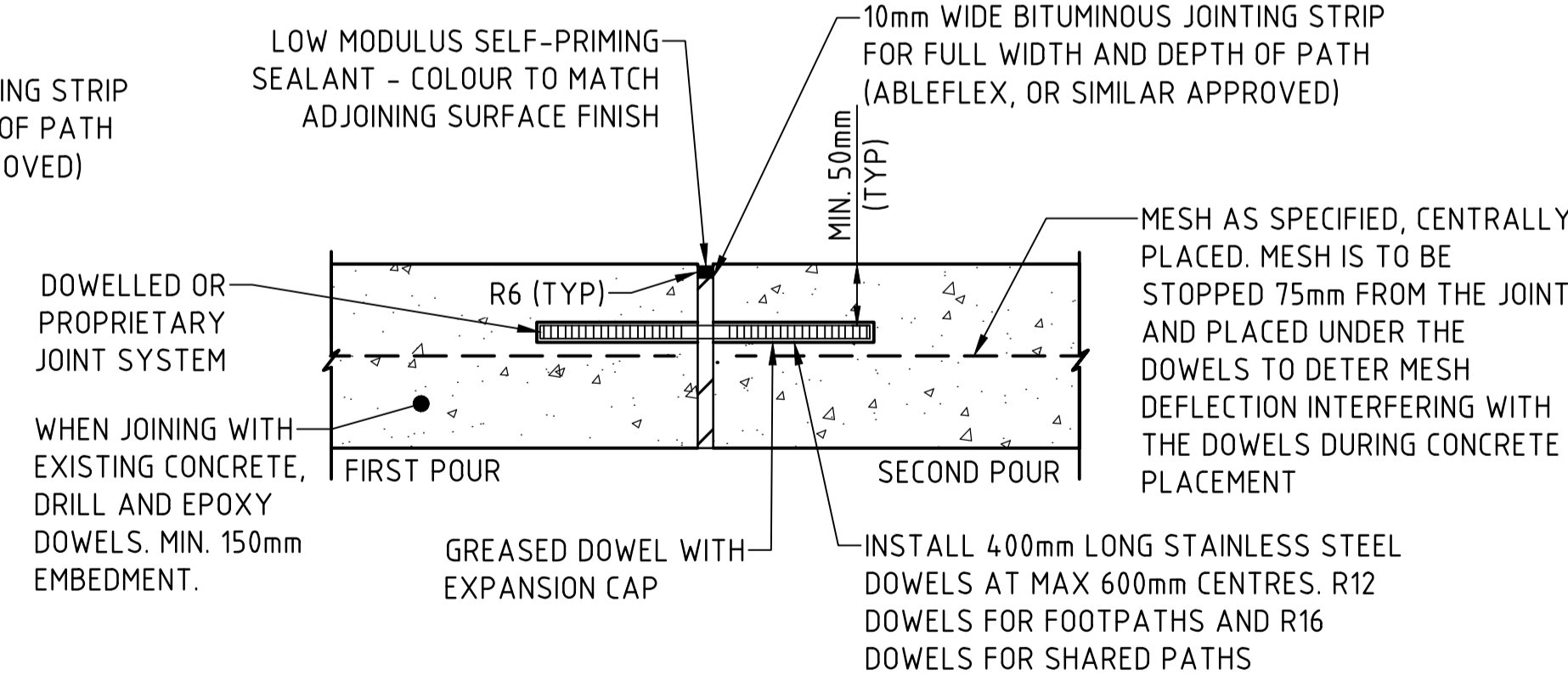
CONTRACTION JOINT (CJ)
NOT TO SCALE



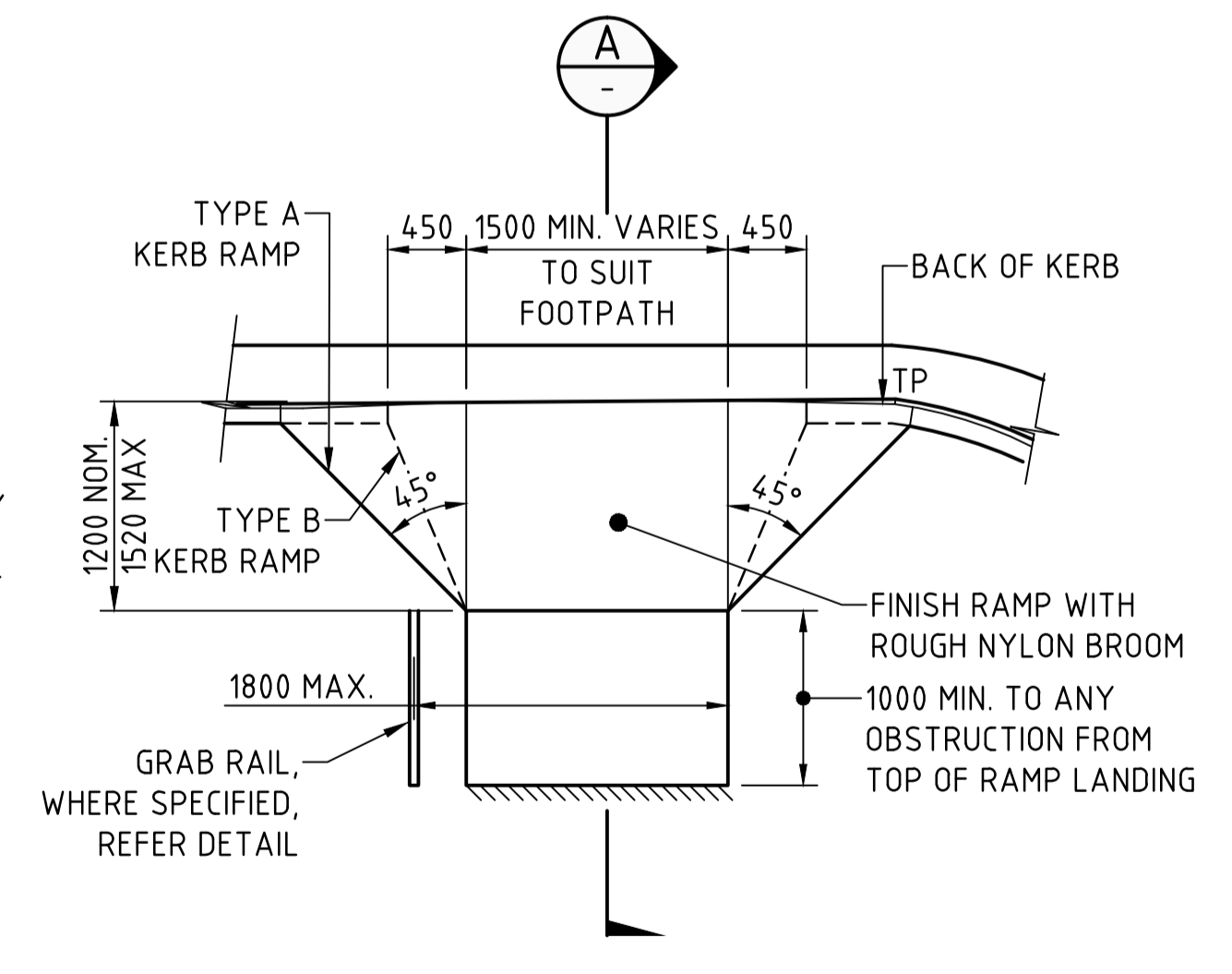
KEYED EXPANSION JOINT (KEJ)
NOT TO SCALE



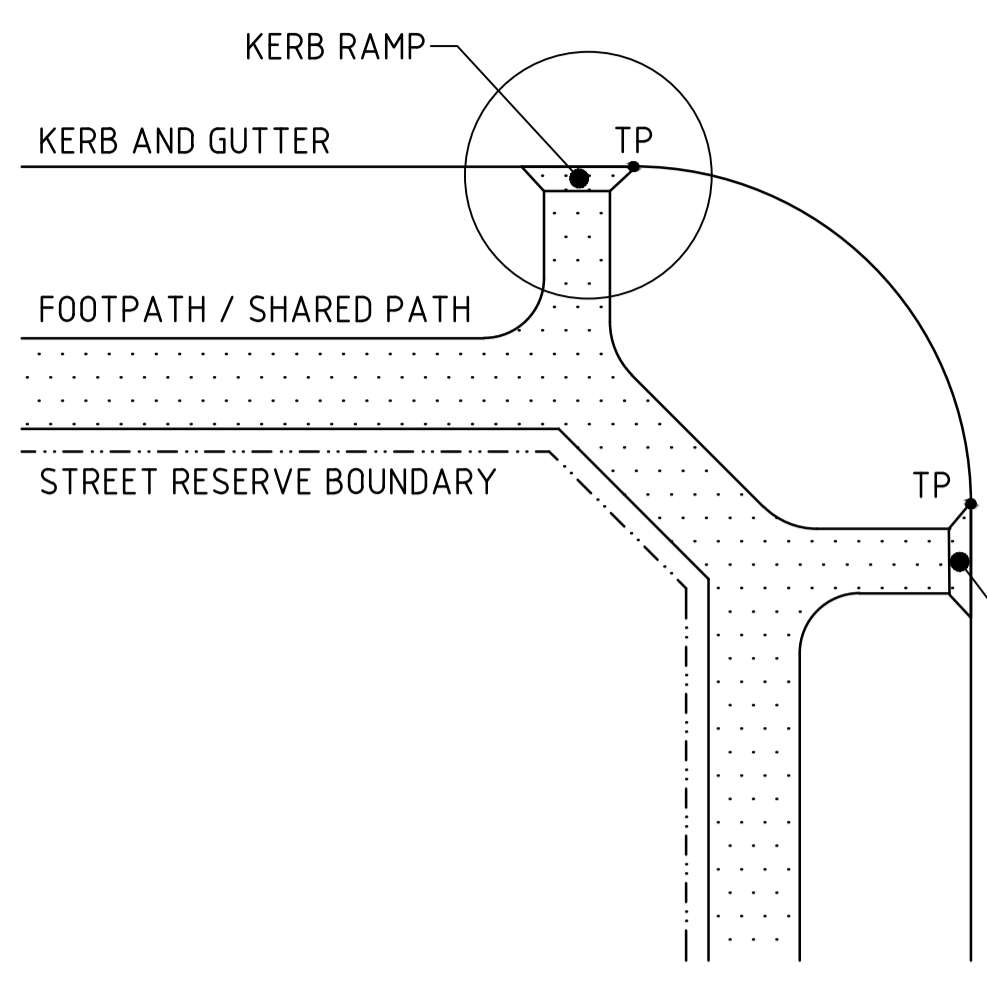
TYPICAL ISOLATION JOINT (IJ) DETAIL
NOT TO SCALE



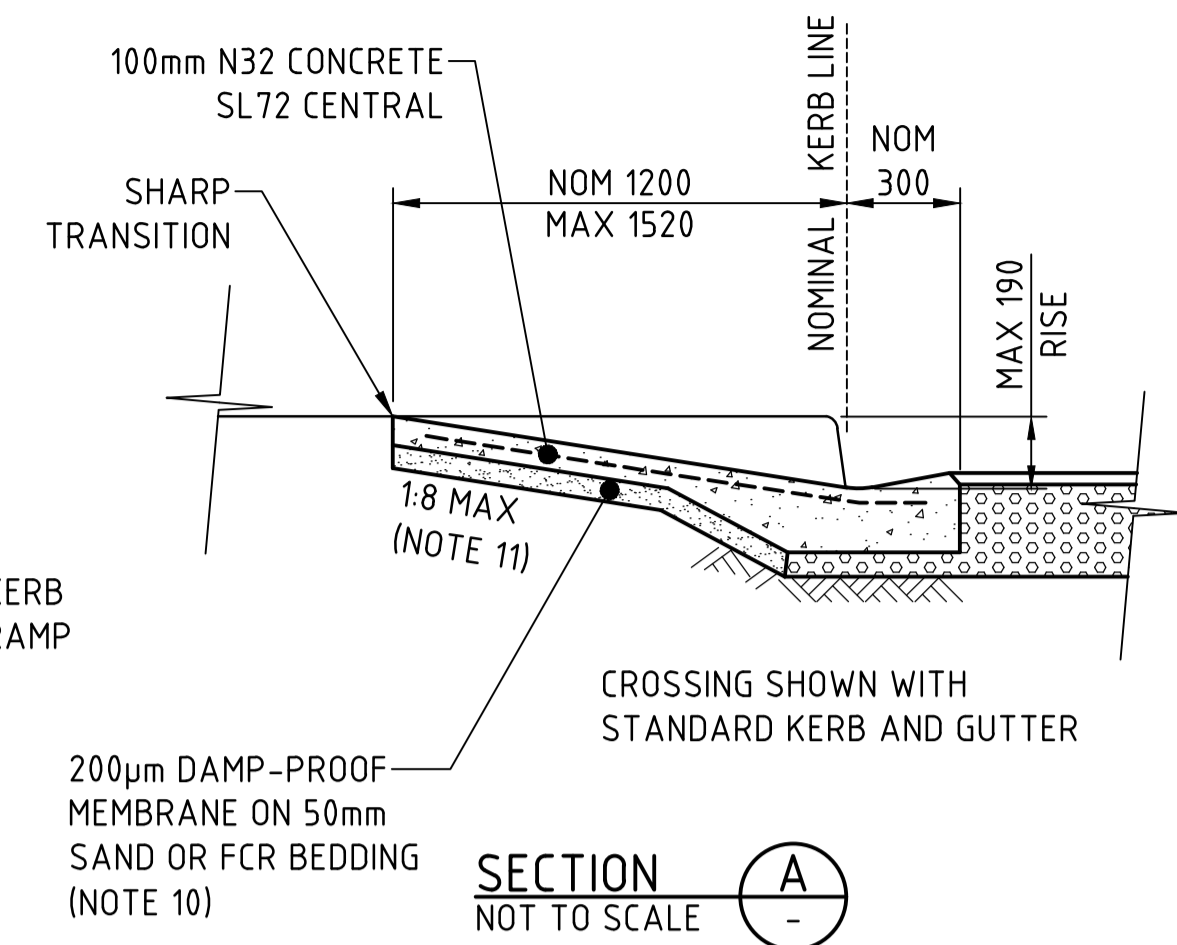
DOWELLED EXPANSION JOINT DETAIL (DEJ)
NOT TO SCALE



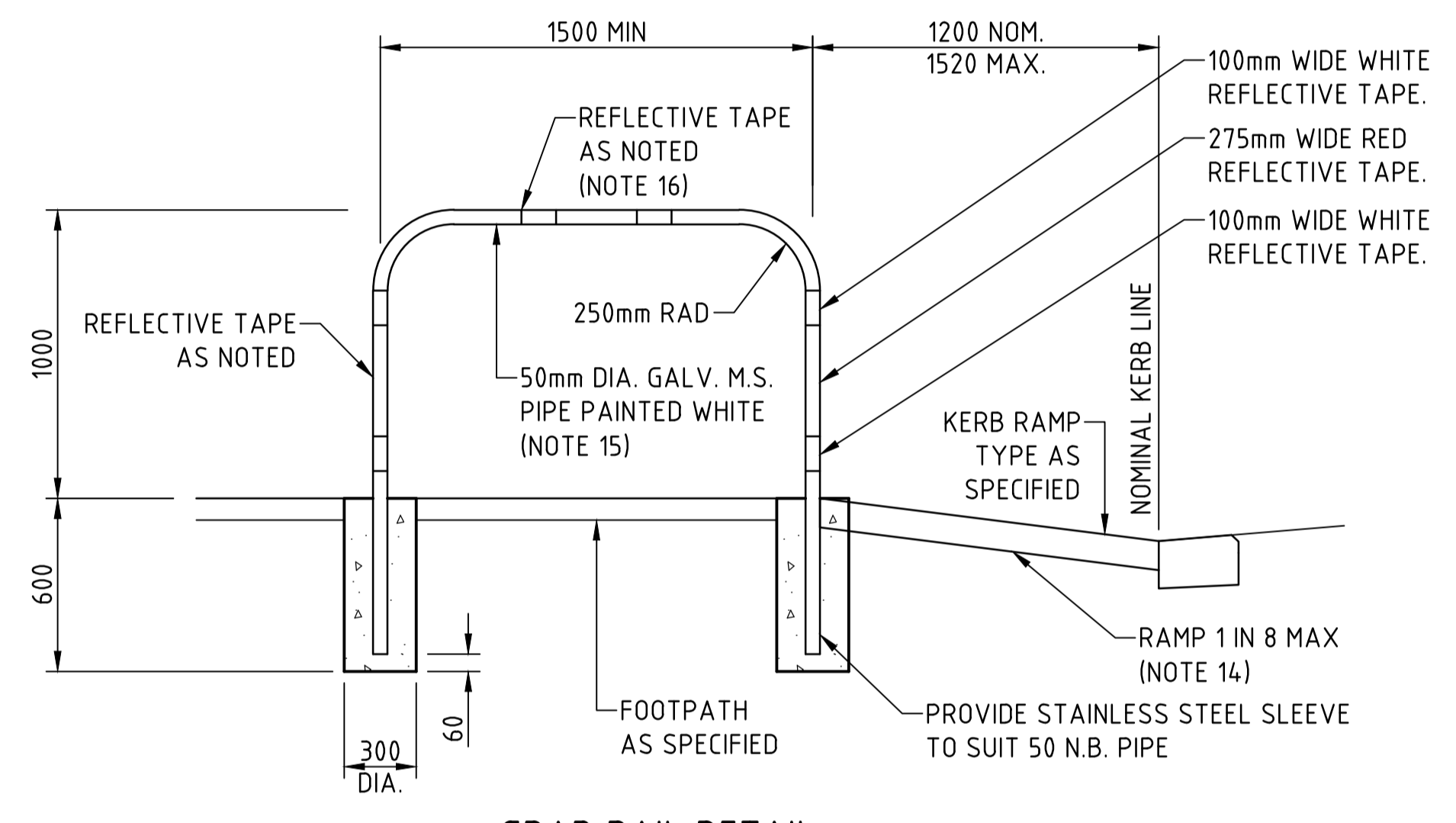
PLAN OF KERB RAMP (NOTE 13)
NOT TO SCALE



KERB RAMP PREFERABLE LOCATIONS
NOT TO SCALE



SECTION A
NOT TO SCALE



GRAB RAIL DETAIL
NOT TO SCALE

GENERAL NOTES:

- ALL WORK MUST COMPLY WITH THE STANDARD SPECIFICATION FOR SUBDIVISIONS ALONG WITH PROJECT SPECIFIC AMENDMENTS.
 - ALL DIMENSIONS ARE IN MILLIMETRES UNLESS NOTED OTHERWISE.
 - CONCRETE WORKS MUST COMPLY WITH AS3600 AND AS1379.
 - CONCRETE TO BE MINIMUM N32/20/80 UNO. CONCRETE DESIGN IS TYPICALLY BASED ON B1 EXPOSURE CLASSIFICATION, WITH MINIMUM REQUIRED COVER TO REINFORCEMENT OF 40mm IN ACCORDANCE WITH AS3600.
- FOR OTHER EXPOSURE CLASSIFICATIONS, COMPLY WITH AS3600 AND THE FOLLOWING MINIMUM STRENGTH AND COVER REQUIREMENTS:
- | EXPOSURE CLASSIFICATION | CHARACTERISTIC STRENGTH (MPa) | REQUIRED COVER (mm) |
|-------------------------|-------------------------------|---------------------|
| A1, A2 | N25/20/80 | 30mm |
| B1 | N32/20/80 | 40mm |
| B2 | N40/20/80 | 45mm |
| C1 | N50/20/80 | 50mm |
| C2 | N50/20/80 | 65mm |
- TABLE NOTE: EXPOSURE CLASSIFICATIONS B2, C1 AND C2 MAY TRIGGER INCREASED CONCRETE THICKNESSES TO ACHIEVE MINIMUM COVER REQUIREMENTS.
- CONCRETE TO BE MOIST CURED FOR AT LEAST 48 HOURS AFTER CONCRETE POUR.
 - NO LONGITUDINAL JOINTS IN PATHS. TRANSVERSE JOINTS MUST BE PROVIDED AS FOLLOWS:
 - CONTRACTION JOINTS (CJ) AT MAX 2m CENTERS, AND ALL CHANGES IN SHAPE AND DIRECTION.
 - EXPANSION JOINTS (KEJ, OR DEJ) AT MAX 6m CENTERS. CONCRETE THICKNESS MAY NEED TO BE INCREASED WHEN USING DEJS DUE TO RISK OF SPALLING IN THIN SLABS.
 - SAWCUT JOINTS SHOULD BE UNDERTAKEN BETWEEN 4 HOURS TO 12 HOURS AFTER LAYING CONCRETE, DEPENDING ON CONDITIONS. JOINT SEALANT IS REQUIRED IN SANDY AREAS.
 - CONSTRUCTION JOINTS ARE REQUIRED FOR PLANNED INTERRUPTIONS. ROUGHEN AND CLEAN FACE OF HARDENED CONCRETE, REMOVE LOOSE AND FOREIGN MATERIAL.
 - THE CONCRETE PATH MUST BE STEEL TROWELLED FOLLOWED BY A MOIST HAIR BRUSH. THE FINAL SURFACE MUST BE NON-SLIP WITH A MINIMUM TEXTURED SURFACE OF 2mm.
 - SAND OR FCR BEDDING MAY BE OMITTED FOR CATEGORY B AND C INFRASTRUCTURE LOCALITIES.
 - CROSSFALL IN VERGE ADJACENT TO FOOTPATH TO COMPLY WITH AS1428.1, WHERE APPLICABLE.
 - INCREASED CLEARANCE TO BATTERS MAY BE REQUIRED FOR SHARED PATHS PER AUSTRROADS GUIDELINES.
 - TYPE A KERB RAMP TO BE USED WHEREVER PAVED SURFACES (PEDESTRIAN CORRIDORS) EXTEND TO BACK OF KERB. TYPE B MAY BE USED WHEREVER PAVED SURFACES (PEDESTRIAN CORRIDORS) EXTEND NO FURTHER THAN TOP OF KERB RAMP LOCATION.
 - IF HEIGHT DIFFERENCE BETWEEN KERB INVERT AND LEVEL OF PATH EXCEEDS 150mm, OR LENGTH OF CROSSOVER EXCEEDS 1200mm, THEN GRADE OF CROSSOVER TO BE 1 IN 14. (REFER TO AS1428.1)
 - GRAB RAILS TO BE FROM 50mm N.B GALVANISED STEEL PIPE WITH WALL THICKNESS NOT LESS THAN 3mm. ALL JOINTS SHALL BE WELDED & SHARP EDGES GROUND SMOOTH. ALL WELDING SLAG TO BE SHIPPED AWAY AND AREAS OF DAMAGED GALVANISING SHALL BE MADE GOOD WITH AN APPROVED WHITE ZINC RICH PAINT.
 - REFLECTIVE TAPE TO BE CLASS 1 TO AS1906.1
 - WHERE FOOTPATH IS PROVIDED WITH BLOCK-OUTS FOR SERVICE PIT LIDS (OR SIMILAR), PROVIDE ISOLATION JOINTS (IJ) AROUND SERVICE PIT LID AND N12 TRIMMER BARS AT ALL SERVICE PIT LID CORNERS.
 - ALL PATHS MUST BE FREE DRAINING AND NOT CONCENTRATE FLOWS ON OR ALONG THE EDGE OF PATH. FINISH PATHS 0 - 20mm LOWER THAN ADJACENT GROUND ON UPSLOPE SIDE AND 0 - 20mm HIGHER THAN ADJACENT GROUND ON DOWNSLOPE SIDE.
 - AS CONSTRUCTED CROSSFALL ON FOOTPATHS MUST NOT EXCEED 2.5% (1:40) INCLUDING LEVEL TOLERANCES IN PART 4 STANDARD SPECIFICATION FOR SUBDIVISIONS.

No.	AMENDMENT DESCRIPTION	DATE	INIT.	DEPT/COMPANY
2	RE-ISSUED AS A STANDARD DRAWING	JUNE 24	JCM	BYRNE
1	RE-ISSUED AS A STANDARD DRAWING	APR 23	KS	BYRNE
0	ISSUED AS A STANDARD DRAWING	AUG 20	KS	BYRNE

Drawn	Checked
KS Date: AUGUST 2020	PB Date: AUGUST 2020
Designed PB	Checked SPB
Date: AUGUST 2020 Design Project Leader SPB	Date: AUGUST 2020 NTG Project Manager N/A
Date: AUGUST 2020	Date: AUGUST 2020



SUBDIVISION DEVELOPMENT GUIDELINES STANDARD DRAWINGS				
STREETS AND PATHWAYS				
FOOTPATHS, SHARED PATHS AND KERB RAMPS				
TYPICAL DETAILS				
NTG Project No.	NTG Asset No.	Sheet Reference	NTG Drawing No.	Amendment
-	-	1 OF 1	SS1009	2