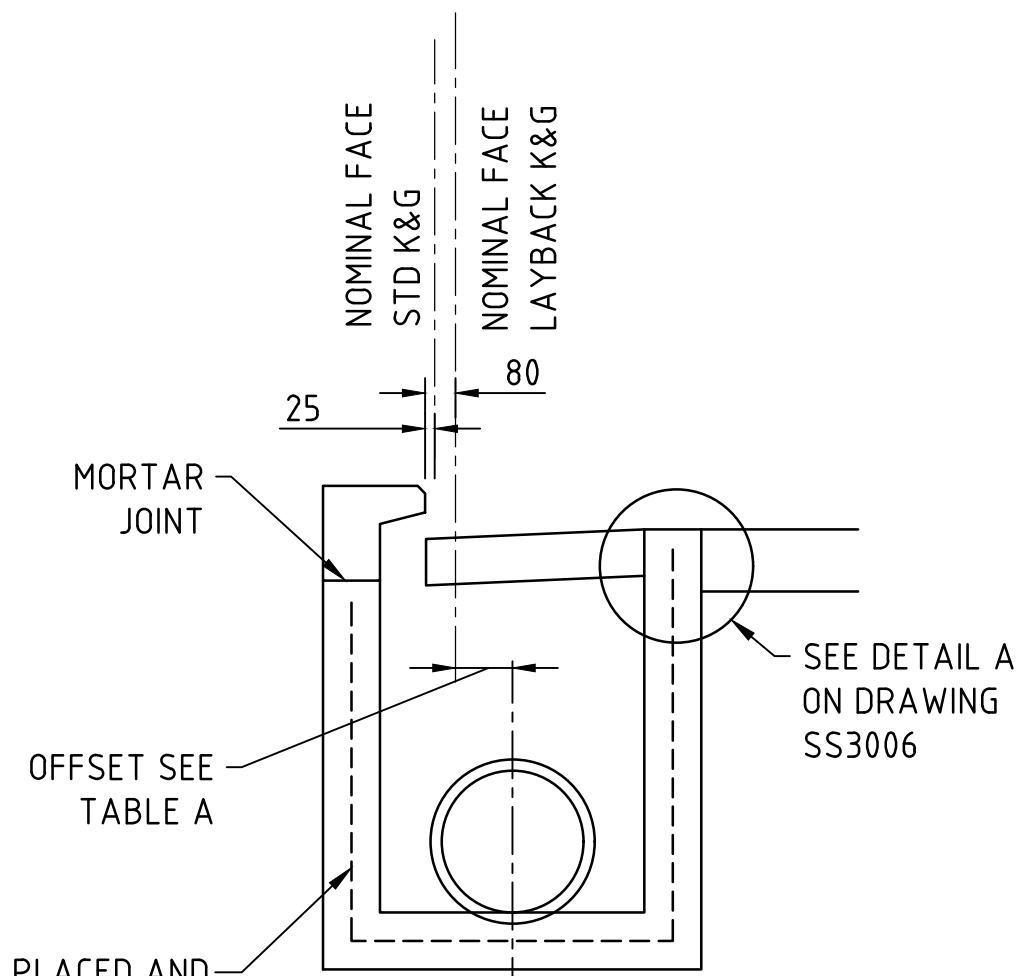
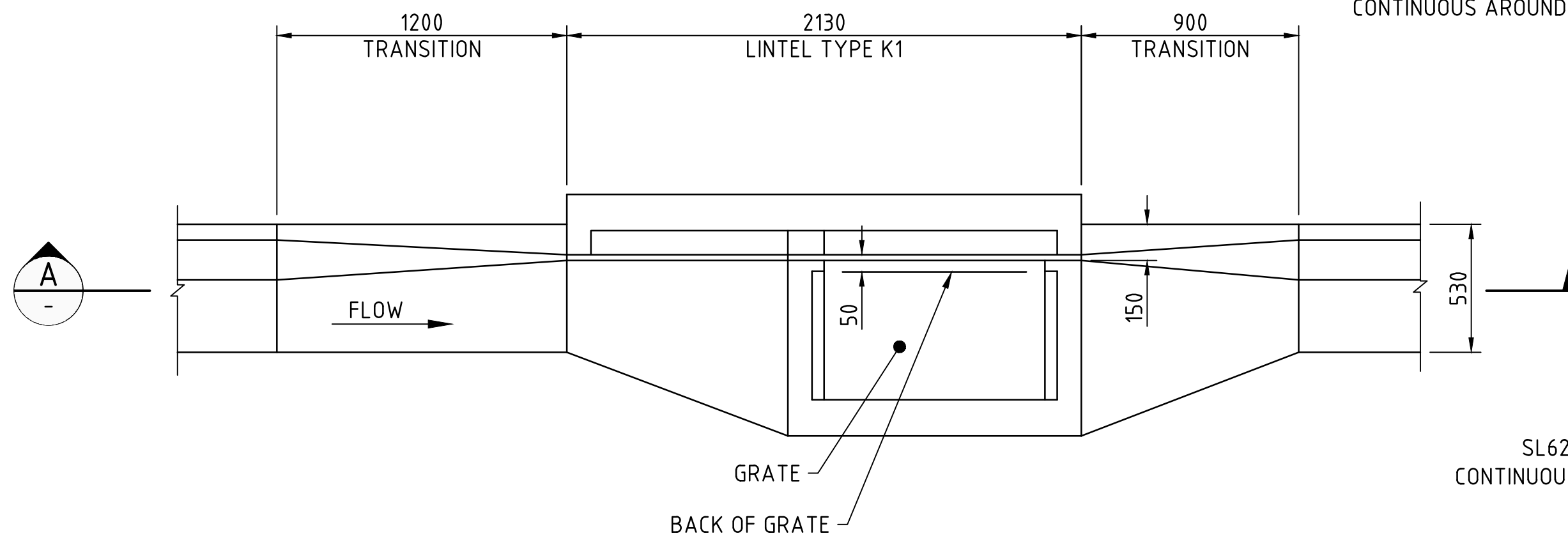


SINGLE BAY SIDE ENTRY PIT PLAN
(STANDARD KERB & GUTTER)
NOT TO SCALE

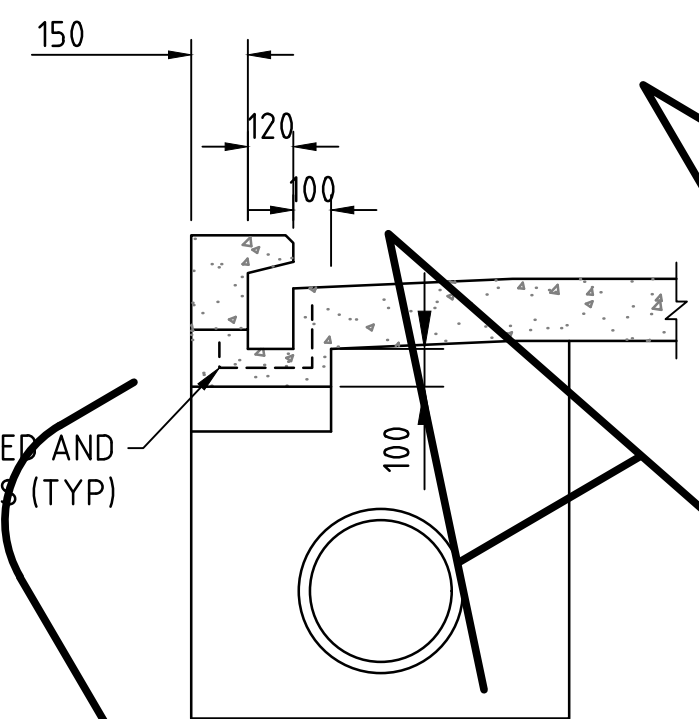


SECTION D
NOT TO SCALE

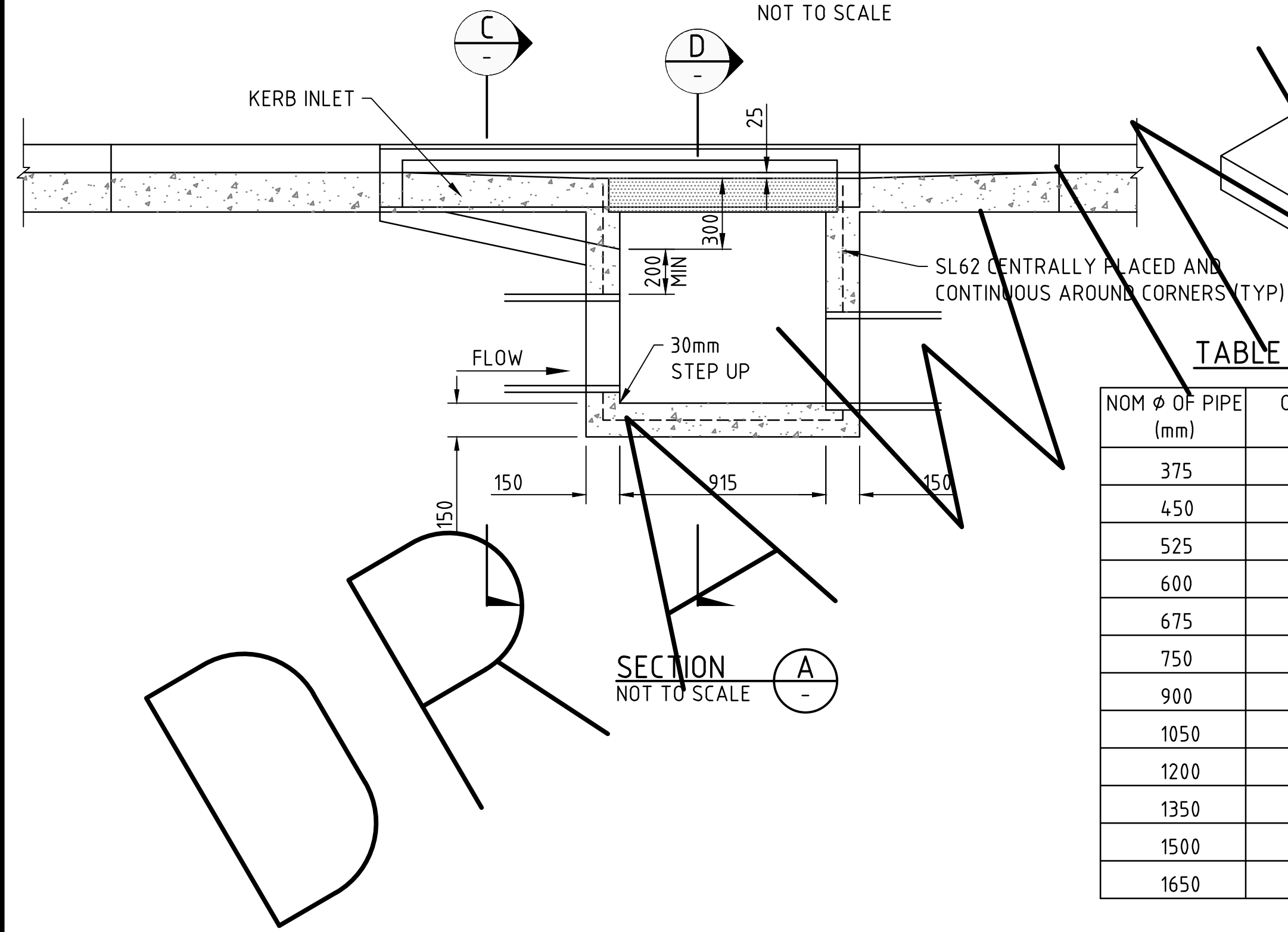


SINGLE BAY SIDE ENTRY PIT PLAN
(LAYBACK KERB & GUTTER)
NOT TO SCALE

SL62 CENTRALLY PLACED AND CONTINUOUS AROUND CORNERS (TYP)



SECTION C
NOT TO SCALE



SECTION A
NOT TO SCALE

TABLE A

NOM Ø OF PIPE (mm)	OFFSET (mm)
375	160
450	160
525	160
600	160
675	160
750	400
900	400
1050	400
1200	400
1350	625
1500	625
1650	625

ISOMETRIC VIEW TYPE 'A'
1 BAY PIT ON GRADE

NOTES:

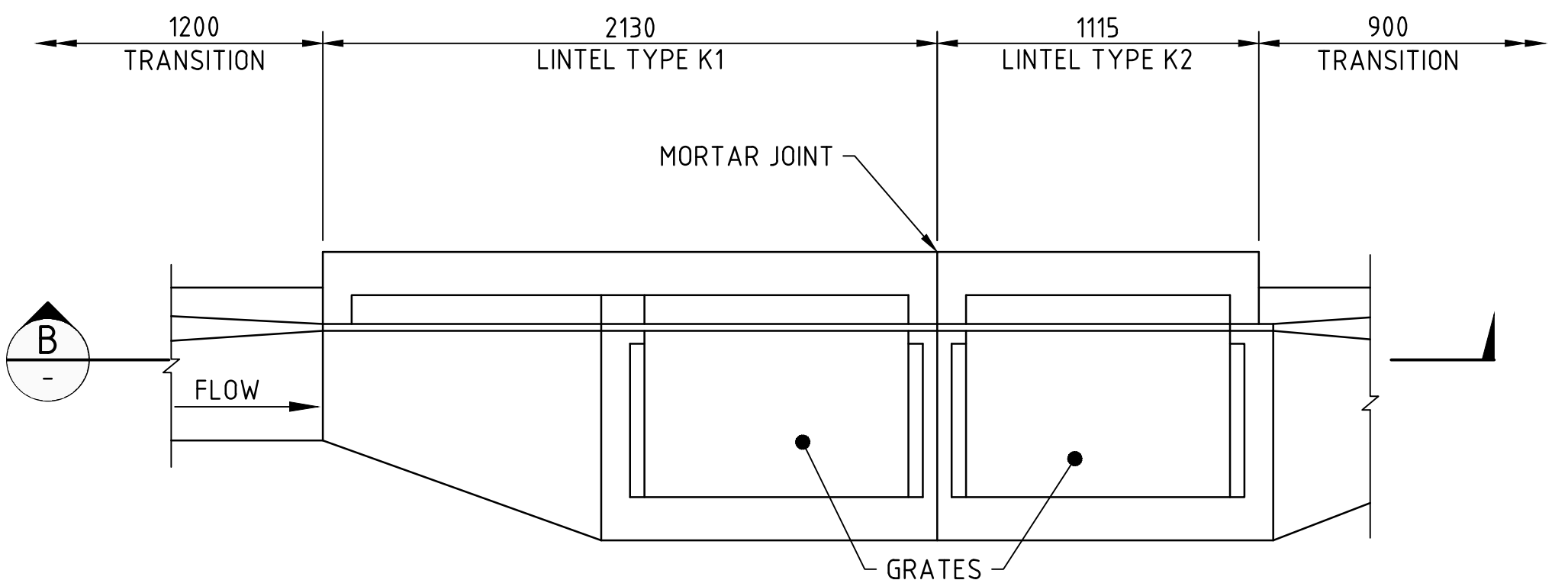
- ALL WORK MUST COMPLY WITH THE STANDARDS SPECIFICATION FOR SUBDIVISIONS ALONG WITH PROJECT SPECIFIC AMENDMENTS.
- ALL DIMENSIONS IN MILLIMETERS (mm) UNLESS NOTES OTHERWISE.
- CONCRETE TO BE MINIMUM N32/20/80 UNO. CONCRETE DESIGN IS TYPICALLY BASED ON B1 EXPOSURE CLASSIFICATION, WITH MINIMUM REQUIRED COVER TO REINFORCEMENT OF 40mm IN ACCORDANCE WITH AS3600.

FOR OTHER EXPOSURE CLASSIFICATIONS, COMPLY WITH AS3600 AND THE FOLLOWING MINIMUM STRENGTH AND COVER REQUIREMENTS:

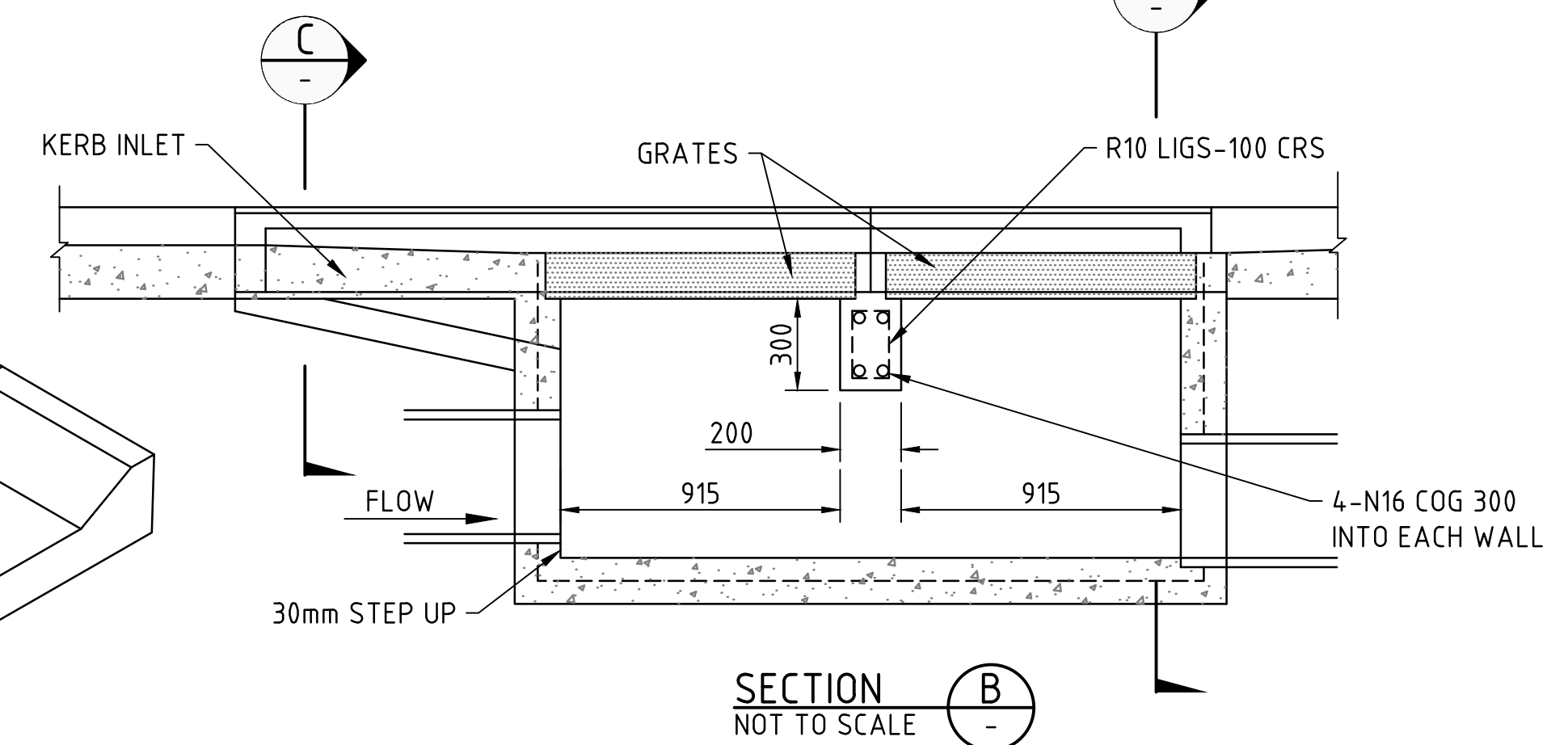
EXPOSURE CLASSIFICATION	CHARACTERISTIC STRENGTH (MPa)	REQUIRED COVER (mm)
A1, A2	N25/20/80	30mm
B1	N32/20/80	40mm
B2	N40/20/80	45mm
C1	N50/20/80	50mm
C2	N50/20/80	65mm

TABLE NOTE: EXPOSURE CLASSIFICATIONS B2, C1 AND C2 MAY TRIGGER INCREASED CONCRETE THICKNESSES TO ACHIEVE MINIMUM COVER REQUIREMENTS.

- ALL CONCRETE WORKS MUST COMPLY WITH AS1379 AND AS3600.
- ALL REINFORCING MUST COMPLY WITH AS1304 AND AS4671.
- ALL WORK IN CONFINED SPACES MUST COMPLY WITH AS2865.
- ALL WORK AT HEIGHTS MUST COMPLY WITH WORKSAFE AUSTRALIA GENERAL CODE OF PRACTICE FOR THE PREVENTION OF FALLS IN GENERAL CONSTRUCTION.
- FOR FIXING OF PRECAST COMPONENTS USE MORTAR MIXED WITH 'BONDCRETE' OR SIMILAR APPROVE AGENT.
- WEEPHOLES MUST BE PROVIDED REFER SS3000 FOR DETAILS.
- LOCATE KERB RAMP CLEAR OF TRANSITION SECTIONS TO PITS.
- ALL FRAMES, COVERS, LINTELS AND LIDS TO BE CLASS C LOAD RATING GENERALLY AND CLASS D WHERE LOCATED AT TANGENT POINTS OR WITHIN THE KERB RADIUS AT INTERSECTIONS.
- REFER PROJECT DRAWINGS FOR ACTUAL LOCATION OF PIPE(S).
- PROVIDE 7 MPa FLOWABLE FILL BACKFILL TO ALL DRAINAGE STRUCTURES.
- DESIGN AND INSTALLATION OF PRECAST PITS WHERE APPROVED, SHALL ENSURE THAT PENETRATIONS DO NOT COMPROMISE THE OVERALL STRENGTH CAPACITY OF THE PIT.
- PIPES ENTERING ON FRONT OR BACK WALLS OF MULTIPLE BAY PITS SHALL BE CENTERED ON BAY CENTRELINES NOT ON SUPPORT BEAM CENTRELINES.
- FOR LINTEL AND PIT ARRANGEMENTS ON-GRADE / IN-SAG AND WITH MULTIPLE BAYS, REFER DRAWINGS SS3006.
- FOR GRATE AND FRAME DETAILS REFER DRAWING SS3007.
- PITS TO BE MAX 3m DEEP UNLESS OTHERWISE APPROVED BY THE RELEVANT AUTHORITY. PITS EXCEEDING 3m DEPTH MUST BE CERTIFIED BY A STRUCTURAL ENGINEER.



MULTI-BAY SIDE ENTRY PIT PLAN
(LAYBACK KERB & GUTTER)
NOT TO SCALE



SECTION B
NOT TO SCALE

No.	AMENDMENT DESCRIPTION	DATE	INIT.	DEPT/COMPANY
1	RE-ISSUED AS A STANDARD DRAWING	APR 23	KS	BYRNE
0	ISSUED AS A STANDARD DRAWING	AUG 20	KS	BYRNE

Drawn KS Date: AUGUST 2020 Designed PB Date: AUGUST 2020 Design Project Leader SPB Date: AUGUST 2020	Checked PB Date: AUGUST 2020 Checked SPB Date: AUGUST 2020 NTG Project Manager N/A Date: AUGUST 2020
---	---



SUBDIVISION DEVELOPMENT GUIDELINES STANDARD DRAWINGS
STORMWATER DRAINAGE

GRATED SIDE ENTRY PIT
GENERAL ARRANGEMENT

NTG Project No.	NTG Asset No.	Sheet Reference	NTG Drawing No.	Amendment
-	-	1 OF 3	SS3005	1