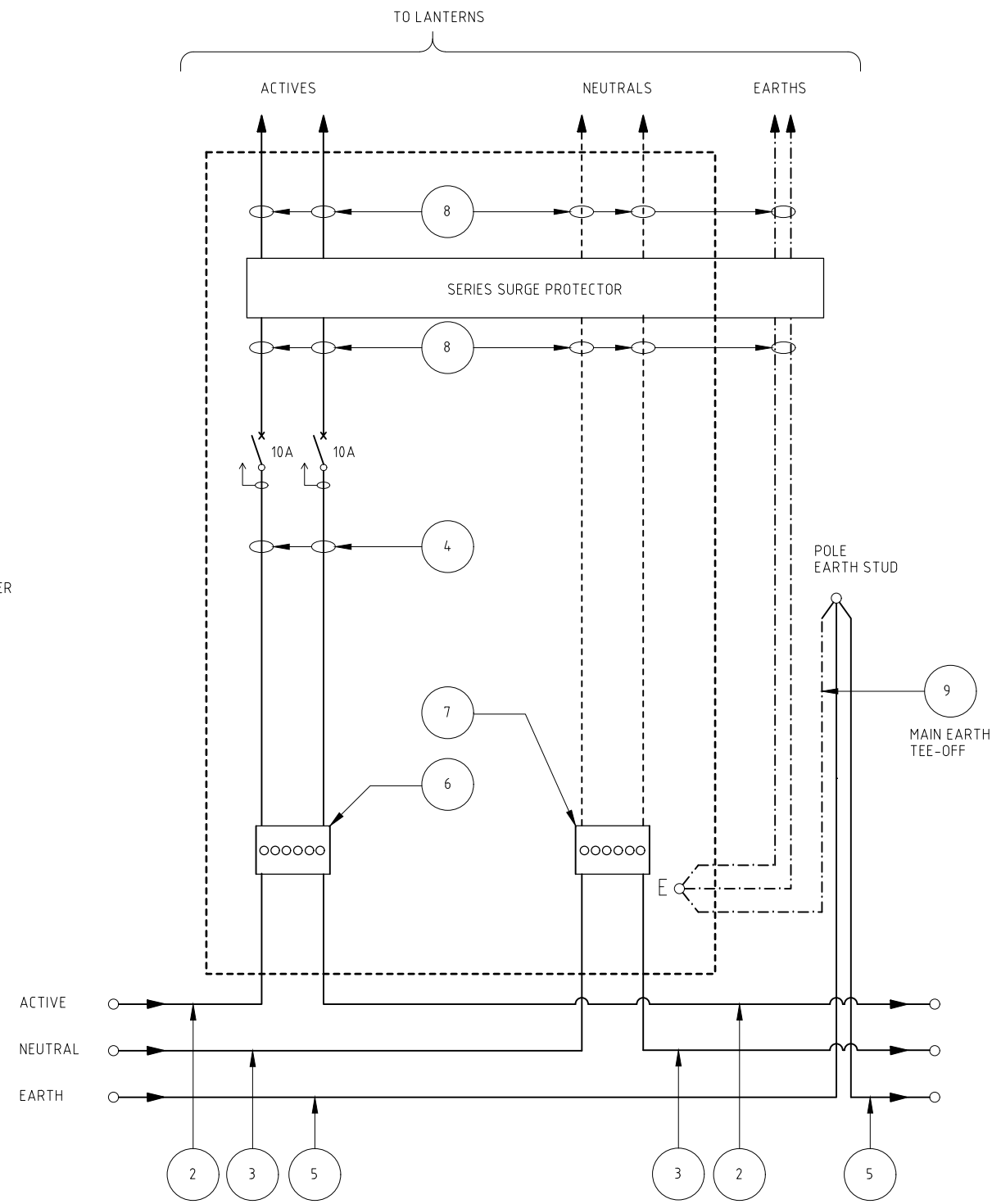


WIRING DIAGRAM



SCHEMATIC WIRING DIAGRAM

**NOTES:**

1. FOR RIGIDLY MOUNTED COLUMNS ONLY.
2. FOR SINGLE LUMINAIRE APPLICATIONS FIT ONE RCD/CB AT POSITION 1.
3. FOR DOUBLE LUMINAIRE APPLICATIONS FIT ONE RCD/CB AT BOTH POSITIONS 1 & 2.
4. ALL CABLES SHALL HAVE DESTINATION TAG WITH CRITCHLEY K-TYPE TAG SECURED TO THE CABLE WITH NYLON CABLE TIES.

ITEM No.	QTY.	DESCRIPTION
1	AR	SERIES SURGE PROTECTION
2	AR	25sqmm CU CABLE - BLACK
3	AR	25sqmm CU CABLE - BLACK
4	AR	16sqmm CU CABLE - RED
5	AR	35sqmm CU G/Y PVC
6	1	INSULATED MIN. 6 HOLE RED ACTIVE LINK TO SUIT UP TO 35sqmm Cu CABLE
7	1	INSULATED MIN. 6 HOLE BLACK NEUTRAL LINK TO SUIT UP TO 35sqmm Cu CABLE
8	AR	4sqmm TWIN/ECC CABLE
9	AR	6sqmm CU GR/Y INSULATED CABLE
10	AR	10A RCD/CB 10kA TYPE B 30mA

TO BE READ IN CONJUNCTION WITH DRAWING SS5013

ABBREVIATION: AR = AS REQUIRED

SCALE: N.T.S.

0	ISSUED AS A STANDARD DRAWING	AUG 2020	CJ	AF
No.	DESCRIPTION	DATE	INIT.	DEPT/COMPANY.
AMENDMENTS				

DRAWN C J	CHECKED PB
DATE AUGUST 2020	DATE AUGUST 2020
DESIGNED C J	CHECKED PB
DATE AUGUST 2020	DATE AUGUST 2020
DESIGN PROJECT LEADER PB	NTG PROJECT MANAGER N/A
DATE AUGUST 2020	DATE AUGUST 2020



SUBDIVISION DEVELOPMENT GUIDELINES STANDARD DRAWINGS LIGHTING				
LED LUMINAIRE SWITCH PACK WIRING DIAGRAM				
NTG PROJECT No.	NTG ASSET No.	SHEET No.	NTG DRAWING No.	AMENDMENT
-	-	13 OF 16	SS5012	0
				SHEET SIZE A1